

DISTRICT SURVEY REPORT FOR OTHER MINOR MINERALS, DISTRICT KHARGONE M.P.



**AS PER NOTIFICATION NO. S.O. 141(E) NEW DELHI, THE 15TH JANUARY,
2016 & 25TH JULY 2018 OF MINISTRY OF ENVIRONMENT, FOREST AND
CLIMATE CHANGE**

YEAR-2022

**PREPARED BY SUB-DIVISIONAL COMMITTEE
COMPRISING OF SUB-DIVISIONAL MAGISTRATE, OFFICERS FROM
IRRIGATION DEPARTMENT, STATE POLLUTION CONTROL BOARD, FOREST
DEPARTMENT, GEOLOGY OF MINING OFFICER**


State Pollution Control Board
Assessment Authority, M.P.
(EPCB)
Paryavarán Parisar
E-5, Arera Colony, Bhopal (M.P.)

(14) OTS

::कार्यालय कलेक्टर (खनिज शाखा) जिला खरगौन म0प्र0::

क्रमांक/ 8268 /खनिज/22
प्रति ,

खरगौन दिनांक 15/09/2022

सदस्य सचिव
राज्य पर्यावरण समाघात निर्धारण प्राधिकरण (SEIAA)
पर्यावरण

विषय:- जिले की जिला सर्वेक्षण रिपोर्ट (DSR) प्रस्तुत करने के संबंध में।

---000---

उपरोक्त विषयान्तर्गत निवेदन है कि, जिले की (रेत खनिज को छोड़कर) अन्य गौण खनिजों की जिला सर्वेक्षण रिपोर्ट (DSR) में सिएक बैठक दिनांक 10.06.2022 में जिला सर्वेक्षण रिपोर्ट में आवश्यक संशोधन हेतु सुझाव दिये गये थे। सिएक की 591 वीं बैठक दिनांक 27.08.2022 में दिये गये निर्देशानुसार खनिज रेत की (DSR) रिपोर्ट प्रेषित की गई थी। जिसका अनुमोदन हो चुका है। रेत खनिज को छोड़कर अन्य गौण खनिजों की प्रथक से जिला सर्वेक्षण रिपोर्ट में सिएक द्वारा दिये गये सुझाव अनुसार आवश्यक संशोधन उपरांत अनुशंसा सहित (DSR) रिपोर्ट मूलतः आगामी कार्यवाही हेतु इस पत्र के साथ संलग्न प्रेषित है।

संलग्न:- जिला सर्वेक्षण रिपोर्ट (DSR)


15.09.2022
प्रभारी अधिकारी
खनिज-शाखा

जिला खरगौन म.प्र.

पृ. क्रमांक/ 8269 /खनिज/22

खरगौन दिनांक 15/09/2022

प्रतिलिपि:-संचालक, भौमिकी तथा खनिकर्म, 29-ए खनिज भवन भोपाल की ओर सूचनार्थ।

प्रभारी अधिकारी
खनिज-शाखा

जिला खरगौन म.प्र.

::कार्यालय कलेक्टर (खनि-शाखा) जिला-खरगोन (म.प्र.)::

क्रमांक/ 8273/खनिज/22

खरगोन 15 / 09 / 2022

प्रति,

राज्य स्तरीय मूल्यांकन समिति,
भोपाल म.प्र.

विषय- 576 वीं बैठक दिनांक 10.06.2022 में दर्ज आपत्तियों का निराकरण किया जाकर संशोधित जिला सर्वेक्षण रिपोर्ट (रेत को छोड़कर अन्य गौण खनिजों) अनुमोदन हेतु प्रस्तुत।

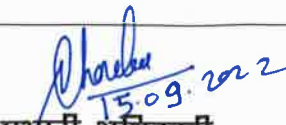
संदर्भ- राज्य स्तरीय मूल्यांकनसमिति की बैठक दिनांक 10.06.2022 दर्ज आपत्तियां।

-----000-----

उपरोक्त संदर्भित विषयांतर्गत लेख है कि पूर्व में प्रेषित जिला सर्वेक्षण रिपोर्ट जिला खरगोन म.प्र. का 576 वीं बैठक दिनांक 10.06.2022 में परीक्षण उपरांत राज्य स्तरीय मूल्यांकन समिति की बैठक में दिये गये सुझाव एवं दर्ज आपत्तियों का निराकरण किया जाकर अधिसूचना दिनांक 25/07/2018 में निर्धारित फार्मेट अनुसार तैयार की जाकर, संशोधित जिला सर्वेक्षण रिपोर्ट रेत खनिज हेतु अनुमोदन हेतु संलग्न प्रस्तुत है।

क्र.	आपत्ति	निराकरण
1	प्रस्तुत जिला सर्वेक्षण पर्यावरण, वन एवं जलवायु परिवर्तन मंत्रालय, नई दिल्ली द्वारा जारी अधिसूचना दिनांक 25/07/2018 में निर्धारित फार्मेट अनुसार नहीं बनाई गई है तथा कई जानकारियाँ वांछित तालिका में नहीं दी गई है जिस कारण रिपोर्ट अपूर्ण है।	संशोधित जिला सर्वेक्षण रिपोर्ट पर्यावरण, वन एवं जलवायु परिवर्तन मंत्रालय, नई दिल्ली द्वारा जारी अधिसूचना दिनांक 25/07/2018 में निर्धारित फार्मेट अनुसार तैयार की गयी है।
2	बिंदु क्रमांक-26 की जानकारी जो माईनर मिनरल (रेत छोड़कर) से संबंधित है, के अवलोकन से ज्ञात होता है कि जिले में हरित क्षेत्र के विकास हेतु खदानों में वृक्षारोपण की जानकारी नहीं दी गई है, जिसको अद्यतन किया जाना चाहिए। साथ ही निर्धारित लक्ष्य के विरुद्ध कितना वृक्षारोपण किस वर्ष किया है, उसको भी अंकित किया जाना चाहिए।	संलग्न जिला सर्वेक्षण रिपोर्ट के पृष्ठ क्र. 51 से 59 तक खदानवार वृक्षारोपण की जानकारी का समावेश किया गया है।
3	इस प्रकार जिले में स्वीकृत/प्रस्तावित खदानों को को-आर्डिनेट के अनुसार डिजिटार्इज मेप (आर्क व्यू/गूगल अर्थ कम्पेरेवल (सी.डी.में) भी संलग्न किया जाये ताकि पर्यावरण अभिस्वीकृति के समय खदानों की सही स्थिति ज्ञात करने में तथा 500 मीटर के अंदर स्थित अन्य स्वीकृत खदानों की जानकारी प्राप्त करने में सुविधा हो।	जिले में स्वीकृत/प्रस्तावित खदानों को को-आर्डिनेट के अनुसार डिजिटार्इज मेप (आर्क व्यू/गूगल अर्थ कम्पेरेवल-सी.डी.में) संलग्न प्रेषित है।
4	जिला सर्वेक्षण रिपोर्ट में प्रदर्शित नक्शों में जो भी फीचर्स दिखाया जाता है उसको संबंधित नक्शों के लीजेंड में भी दिखाया जाना चाहिए एवं नक्शों का स्केल ऐसा होना चाहिए कि समस्त फीचर स्पष्ट दिख सके। यदि ए-4 साईज में नक्शों नहीं आ पा रहे हो तो ए-3 साईज में नक्शों को बनाना चाहिए।	प्रदर्शित नक्शों में जो भी फीचर्स दिखाया गया है उसको संबंधित नक्शों के लीजेंड में भी दर्शाया गया है एवं नक्शों का स्केल ऐसा रखा गया है कि समस्त फीचर स्पष्ट दिख सके।
5	समिति ने यह भी सुझाव दिया कि सभी खनिज अधिकारी अपनी साईट विजिट के दौरान खदान द्वारा किये जा रहे पर्यावरणीय एवं सामाजिक पहलुओं का भी अवलोकन करें एवं यदि कोई पर्यावरणीय संवेदनशीलता दृष्टिगत हो, जिस पर ध्यान दिया जाना आवश्यक हो तो संबंधित तथ्यों से राज्य स्तरीय पर्यावरण समाघात निर्धारण प्राधिकरण को उचित कार्यवाही हेतु अवगत करायें।	दिये गये सुझाव का ध्यान रखा जा रहा है।

संलग्न:- के.एम.एल फाईल की सीडी।


 प्रभारी अधिकारी
 खनिज-शाखा

जिला खरगोन म0प्र0

INDEX

S.N	CONTENT	PAGE NO
1	INTRODUCTION	4-5
2	OVERVIEW OF MINING ACTIVITY IN THE DISTRICT	5-6
3	GENERAL PROFILE OF THE DISTRICT	6-8
4	GEOLOGY OF THE DISTRICT	8-19
5	DRAINAGE AND IRRIGATION PATTERN	19-22
6	LAND UTILISATION PATTERN IN THE DISTRICT: FOREST, AGRICULTURE MINING ETC.	23-24
7	SURFACE WATER AND GROUND WATER SCENARIO OF THE DISTRICT	25-26
8	RAINFALL OF THE DISTRICT AND CLIMATIC CONDITION	26-27
9	DETAILS OF THE MINING LEASE OF THE DISTRICT AS PER THE FOLLOWING FORMAT	27
10	DETAILS OF ROYALTY OR REVENUE RECEIVED IN THE LAST THREE YEAR	28
11	DETAILS OF PRODUCTION OF MINOR MINERAL IN LAST THREE YEAR	28
12	MINERAL MAP OF THE DISTRICT	29
13	LIST OF LATTER OF INTENT HOLDERS IN THE DISTRICT ALONG WITH ITS VALIDITY	30
14	TOTAL MINERAL RESERVE AVAILABLE IN THE DISTRICT	31
15	QUALITY/GRADE OF MINERAL AVAILABLE IN THE DISTRICT	31
16	USE OF MINERAL	31
17	DEMAND AND SUPPLY OF THE MINERAL IN THE LAST THREE YEARS	31-32
18	MINING LEASES MAP	32
19	DETAILS OF THE AREA OF WERE THERE IS A CLUSTER OF MINING LEASES	32-33
20	DETAILS OF THE ECO-SENSITIVE AREA IF ANY, IN THE DISTRICT	34
21	IMPACT ON THE ENVIRONMENT (AIR, WATER, NOISE, SOIL, FLORA & FAUNA, LAND USE, AGRICULTURE, FOREST ETC.) DUE TO MINING ACTIVITY	34-37



State Level Environment Impact
Assessment Authority, M.P.
(EPCO)
Baryavaran Parisar
E-5, Area Colony, Bhopal (M.P.)

22	REMEDIAL MEASURES TO MITIGATE THE IMPACT OF MINING ON THE ENVIRONMENT	38-39
23	RECLAMATION OF MINED OUT AREA (BEST PRACTICE ALREADY IMPLEMENTED IN THE DISTRICT, REQUIREMENT AS PER RULES AND REGULATION, PROPOSED RECLAMATION PLAN)	40-41
24	RISK ASSESSMENT & DISASTER MANAGEMENT PLAN	42-47
25	DETAILS OF THE OCCUPATIONAL HEALTH ISSUES IN THE DISTRICT. (LAST FIVE-YEAR DATA OF NUMBER OF PATIENTS OF SILICOSIS & TUBERCULOSIS IS ALSO NEEDS TO BE SUBMITTED)	47-49
26	PLANTATION AND GREEN BELT DEVELOPMENT IN RESPECT OF LEASES ALREADY GRANTED IN THE DISTRICT;	50-77
R1	ANNEXURE	

LIST OF MAPS

S.N	CONTENT	PAGE NO
1	GEOLOGICAL MAP	16
2	DRAINAGE MAP	21
3	Watershed MAP	22
4	LANDUSE MAP	24
5	Mineral Map	29
6	LOCATION MAP OF STONE QUARRY LEASE	


 State Level Environment Impact
 Assessment Authority, M.P.
 (EPCO)
 Paryavaran Parisar
 E-5, Arera Colony, Bhopal (M.P.)

1-. INTRODUCTION

The present District Survey report for other minor minerals is updated in the light of notification no. S.O. 141(E) New Delhi, the 15th January, 2016 of MINISTRY OF ENVIRONMENT, FOREST AND CLIMATE CHANGE. The District Survey Report shall form the basis for environmental clearance, preparation of reports and appraisal of projects. The Report shall be updated once every five years. The earlier DSR was prepared in the year 2017 and as per above notification, earlier DSR is being updated in the year 2022. This will be a model and guiding document, which is compendium of available mineral resources, geographical set up, environmental and ecological set up of the district and replenishment of minerals. As transportation and construction infrastructure expanded since the mid-twentieth century, the demand for road and construction minerals also increased exponentially. Khargone district is located in the south western part of Madhya Pradesh. The district is surrounded by Indore in the north, Khandwa and Burhanpur in the east, Dhar and Barwani in the west and Maharashtra state in the southern portion of the district. The district covers an area of 8030 square kilometer. The district is situated between the latitudes 21°22' and 22°35' north and longitudes 74°25' N and 76°14' E. The district lies in parts of survey of India Toposheet No. 46N, 460, 55B and 55C and encompasses an area of 8030 sq. km. The district forms almost central section of Narmada valley which is bordered by Vindhyan escarpment in the north and Satpura hills ranges in the south.

समिति द्वारा अनुमोदित

प्रभारी अधिकारी

बनित साधा

जि. न. अ. (म.प्र.)

Labans
State Level Environment
Assessment Authority, M.P.
(EPCO)
Paryavaran Parisar
Arera Colony, Bhopal (M.P.)

Table1 Administrative Setup of the District

SUB-DIVISION	TEHSIL
Khargone	Khargone Town
	Khargone
	Segaon
	Bhagwanpura
	Gogaon
Kasrawad	Kasrawad
Mandleshwar	Mandleshwar
Badwah	Badwah
	Sanawad
Bhikangaon	Bhikangaon
	Jhirniya

2. OVERVIEW OF MINING ACTIVITY IN THE DISTRICT

Minor minerals are important for our society & its exploitation becomes our necessity. Simultaneously we have to protect our environment. Quarrying is the process of removal of minor minerals like murum, stone etc., as the demand for minor minerals increases in construction & its haphazard exploitation is a threat to our environment. In almost every mineral bearing region, mining and land degradation have been inseparably connected. Unscientific mining has caused degradation of land, accompanied by subsidence and consequential mine fires and disturbance of the water table leading to topographic disorder, severe ecological imbalance and damage to land use patterns in and around mining regions.

समिति द्वारा अनुमोदित

State Level Environment Impact
Assessment Authority, M.P.
(EPCO)
Paryavaran Parisar
E-5, P.O. Colony, Bhopal (M.P.)

प्रभारी अधिकारी
बनित शाही
जिला कार्यालय (घ.प्र.)

In Khargone district a sum total of 89 stone Crusher are working & covering an area of 203.551 hectare including Murram working mine, 29 sand mines over an area of 186.506 hectare, and dolomite in 4.047 hectare.

Table No. 2 Details of Mineral Areas

Mineral name	Places	Total area in hectare
Stone crusher & Murram	Khargaon, Bhikangaon, Badawaha, Bhagwanpura, Gogawa, Jhirniya, Kasrawad, Maheshwar, Sengaon	203.551
Dolomite	Badwah	4.047
Total area		394.104

* Based on available data DGM

Major Minerals: No Mining Lease of Major Minerals are Sanctioned in the District.

3. GENERAL PROFILE OF THE DISTRICT

1. Geographical Position	Khargone district lies between north latitudes 22°47' and 22°35' and east longitudes 75°19' and 76°14' in part of survey of India Topo sheet No. 46N, 46, 55B and 55C.
2. Area and Population	<p>I. Geographical Area (Sq. Km) Total Area (Sq. Km): 8,030 Km²</p> <p>II. CENSUS 2011</p> <p>I. Population</p> <p>a. Total Population: 1,873,046</p> <p>b. Male Population: 953,121</p> <p>c. Female Population: 919,925</p> <p>II. Literates</p> <p>a. Total Literates: 986,234</p> <p>b. Male: 575,428</p> <p>c. Female: 410,806</p> <p>III. Main Workers (Census 2011)</p> <p>a. Total Workers: 756,735</p> <p>b. Male Workers: 466,922</p> <p>c. Female Workers: 289,813</p> <p>d. Cultivators: 307,085</p> <p>e. Agricultural Labourers: 425,712</p>

समिति द्वारा अनुमोदित

प्रभारी अधिकारी
सर्विस ब्रान्च

	f. Other Workers:149,798 IV. Languages Spoken in the District The main language spoken in the district is Nimadi, followed by Hindi and then Bareli.
3. Temperature	Mean-Maximum temperature: 34°C Mean-Minimum temperature:19.6°C
4. Rainfall(Inmm)	Normal-South West Monsoon:835mm Annual Rainfall:835mm
5. Agriculture	a. Total Cultivable Area(lakh.Ha):405.7 b. Net Area Sown(Ha):405.66 c. Area Sown more than once(Ha):51.76
6. Rivers, etc.	The main drainage informed being Narmada river and various small nalas and rivulets joins to Narmada. The Tapti drainage system extends in a limited area along the southern boundary of the district.
7. Revenue Administrative Divisions	Revenue Divisions: a. Revenue Tehsils:11 b. Revenue Villages:1,421
8. Local Bodies	a. Municipalities: 8 b. Town Panchayats:594

Description	2011
Actual Population	18,73,046
Male	9,53,121
Female	9,19,925
Population Growth	22.85 %
Area Sq.km.	8,025
Density/KM ²	233
Proportion to population of Madhya Pradesh	2.58 %
Sex Ratio (Per 1000)	965
Child Sex Ratio (0-6 Age)	938
Average Literacy	62.70
Male Literacy	72.08
Female Literacy	53.03
Total Child Population(0-6 Age)	2,99,990
Male Population(0-6 Age)	1,54,758
Female Population(0-6 Age)	1,45,232
Literates	9,86,234

State Level Environment Impact
Assessment Authority, M.P.
(EPCO)
Paryavaran Parishad
Arera Colony, Bhopal (M.P.)

समिति द्वारा अनुमोदित

प्रभारी अधिकारी

Male Literates	5,75,428
Female Literates	4,10,806
Child Proportion (0-6 Age)	16.02 %
Boys Proportion (0-6 Age)	16.24 %
Girls Proportion (0-6 Age)	15.79

4. GEOLOGY

Geologically the area comprises rocks of Mahakoshal group of Palaeo –Protozoic (>2000m.y.). Bijawar group of palaeo to meso- protozoic(1600 to 2000m.y.). rewa group of vindhyan super group of neoproterozoic (570 to 1600m.y.). Bagh and lameta group of upper cretaceous (110m.y.). Basaltic flows of Deccan trap of late cretaceous to palaeogene period (68-62m.y.) and alluvium of quaternary (<1-654m.y.). The rocks of mahakoushal, bijawar, rewa and bagh groups occur in the small area in the north eastern part of the district. The mahakoushal group is represented by phyllites and quartzite occurring as isolated outcrops. The bijawar group of rocks include chert breccias and ferogeneous breccias. Dolomite shell and sandstone and Meta basalt. The breccias consist of angular fragments of vein quartz, smoky and white chert, and jasper embedded in siliceous matrix. Dolomite occurs as lenses and bands and is siliceous in nature. At some places it shown stromatollites structures. The Vindhayan super group is represented by the rewa group which includes to formations namely kanar sandstone and jamoti shells. The sandstone is pink to purple in colour, fine grain, thinly to thickly bedded and quartzitic in nature. Sedimentary structures like cross bedding, ripple marks, groove cast, load structures, mud cracks and clay galls are well preserved in the sandstone. The jamoti shells consist of thick brick red shell interbedded with brownish siltstone and fine grained sandstone. It shown gradational contact with kanar sandstone. The bagh group includes fossiliferous cherty limestone while lameta group consist of middle to coarse grain friable gritty sandstone. Calcareous sandstone and shell outcrop of those rocks are seen on northern

(Signature)

State Level Environment
Assessment Authority, M.P.
(EPCO)
Paryavaran Parishad
Colony, Bhopal (M.P.)

समिति द्वारा अनुमोदित

प्रभारी अधिकारी

रजिस्ट्रार

DISTRICT KHARGONE SURVEY REPORT FOR OTHER MINOR MINERAL

(स.प्र.)

bank of Narmada river, north east and east of barwaha.

Basaltic lava flows of Deccan trap occupy a major part of area in the district. They have been classified into two groups viz. malawa and satpura groups respectively confined to the north and south of Narmada River. The narmada valley delineates a contact between these two groups. The malwa group include a total of 40 basaltic flows, majority of the flows of a Aa type while few are of compound pahoechoe type. The thickness of Aa flows varies from 15 m to 20m, while the individual pahoechoe units are 2 to 5 m thick. These flows are further classified into five formations on the bases of distinct physical characters of the flows. All the flows are nearly horizontally disposed. The rock is fine to medium grained, aphyric to sparsely moderately porphyritic and mega-porphoritic in nature. The satpura group comprises 55 flows of varied types between 198 m and 1033 m elevations above the msl. The general thickness of the individual flows varies between 15 m and 40 m .the lower and middle sequences are of "pahoechoe" type while upper flows are Aa type. The lava flows show tilting in the vicinity of the faults. This group is classified into six formations on the basis of occurrence of magacryst flows and presence of red/green boles.

Numerous dykes of various length, width and composition traverse the flows. Most of them display appreciable relief giving rise to narrow ridge in the area. The dykes have a trend of North West south east and $N70^{\circ}E- S70^{\circ}W$ which corresponds to the Narmada lineament. Compositionally the order of abundance of these dykes is basaltic, doleritic, gabbroic, and acidic. The calcite bands form the minor intrusive showing a general trend of ENE-WSW and $N15^{\circ}W- S15^{\circ}E$. these are 0.5. to 20m. thick and comprise greenish or yellowish transparent, rhombic crystals of calcite.

Alluvium of the quaternary occurs in small patches along narmada river in the north-east corner of district. It includes very fine sand/slit/clay and interlayered sequence of rock gravel.

Minor occurrences of calcite, fluorite and dolomite have been noticed in the area. Fluorite occurs in form of minute discontinuous veinlets and disseminations are found


in bijawar group of rocks. The latter occurrence show higher values of phosphate (upto 31.65% P_2O_5). Occurrence of dolomite limestone has been recorded. Occurrences of Manganese have been reported near nandia. Iron ore occur in minor amount within the banded iron formations. Sandstone of rewa group (vindhyan super group) and lameta group are used as building materials. Basalts and dolerite rocks serve purpose of road material and dimension stone.

Table No. 3 Location of Minerals in Khargone District

S.No.	Name of mineral	Name of place	Latitude/longitude
1.	Calcite	Hirakia	21 ⁰ 53'-74 ⁰ 55'
2.		Budipapar	21 ⁰ 50'-74 ⁰ 46'
3.		Kirkur	21 ⁰ 52'-74 ⁰ 55'
4.		Chaklia	21 ⁰ 50'-74 ⁰ 49'
5.		North of Pauljiwari	21 ⁰ 45'-74 ⁰ 56'
6.		Jalkhera	21 ⁰ 49'-74 ⁰ 54'
7.		Yarwada	21 ⁰ 57'-74 ⁰ 43'
8.		Masterkund	21 ⁰ 53'-74 ⁰ 34'
9.		Chickwani	21 ⁰ 50'-74 ⁰ 39'
10.		Samokhera	21 ⁰ 49'-74 ⁰ 57'
11.			Swetikhera
12.	Fluorite	SE Modri	22 ⁰ 16'-76 ⁰ 07'
13.		North of sadkhera	22 ⁰ 17'-76 ⁰ 03'
14.	Dolomite	Barwaha, near nayapura	22 ⁰ 23'-76 ⁰ 08'
15.		West of chorboli	22 ⁰ 17'-76 ⁰ 01'
16.	Manganese	Near nandia	22 ⁰ 16'15"- 76 ⁰ 0'20"

| समिति द्वारा अनुमोदित

प्रभारी अधिकारी
खनिज शोध
जिला खनिज (म.प्र.)


State Level Environment Impact
Assessment Authority, M.P.
(EPCO)
Paryavaran Parisar
E-5, Arera Colony, Bhopal (M.P.)

The stratigraphic sequence of various rock formations exposed in Khargone district is as below:-

Table No. 4 Chronological Sequence of Geology of Khargone

Formation	Rock Types
Recent	Alluvium, Boulder bed and calc-tuffa
Deccan traps	Basaltic flows and basic intrusions
-----Unconformity-----	
Lametas	Sandstone and siliceous limestone
Bagh – beds	Coralline limestone & Niwar sandstone
-----Unconformity-----	
Vindhyan	Sandstones, shales and Quartzites
-----Unconformity-----	
Bijawars	Quartzites, shales, breccias, chert, Dolomites & Dolomitic limestone.
-----Unconformity-----	
Archeans	Schists, phyllites, granites, Quartzites and Intrusives

Archeans

The rock of Archeans group represented by phyllites hornblende schist and chlorite schists. The phyllites are seen merging into quartz-sericite and chlorite schist with subordinate band of quartz. These rocks are steeply dipping and foliated with foliation plain of WNW ESE direction. Large exposures of these rocks occur at the base of vindhyan quartzite near Surtipura, Chinkti Mondri, and south of Koteswar, phyllites are exposed in the south of Badel and Baryhar and north east of Badlipura.

In the Kanar river section (N-E of Okhla) coarse porphyritic granites are seen intruding the phyllites, schistose rock and granitic gneisses. These rocks are much weathered and there feldspar is completely altered into sericite/kaolinite.

These rocks are intruded by both acid and basic intrusive. The acid

State Level Environment
Assessment Authority, M.P.
(EPCO)
Paryavaran Parisar
Colony, Bhopal (M.P.)

DISTRICT KHARGONE SURVEY REPORT FOR OTHER MINOR MINERAL

प्रभाकर शर्मा
सचिव
जिला-खर्गोण (M.P.)

felsites, quartz –porphyry and quartz veins. Exposers of felsites dykes are seen 1.5 km. north of surtipura tank. There color ranges between brown to pink. It is fine grained and consisting of quartz and feldspar. Indication of flourites has also been recorded in it.

Bijawars

These formations are unconformably over laying the Archeans and are represented by dolomitic and magnesia limestone with occasional irregular veins of quartz / chert, breccias, shell of quartzites. The bijawar formations are over lain, unconformable by vindhyan by sediments.

The outcrops of bijawar dolomite / dolomitic limestone, an important member in the area, are seen in the section of OdhaliNala, cholar river, mondrinala, buitkhera, sandkhera, mohinda, S.E. of “Mondri” and Nadia village. It is a light grey to dark grey with various shades fo pink, purple, black or brown colors. It is hard compact, massive and siliceous / cherty in nature interbedding of chert berccia and irregular distribution of quartz veins and veinlets are frequently seen in these rocks. Its general strike EW, with 25° 55° dip towards south. Dolomitic limestone is well jointed and most of the joints follow the strike direction. Oblique joints are also seen in this rock. This formation at places exhibit brecciated nature where, the irregular fragments of dolomitic limestone are seen cemented in calcareous matrix bedded and brecciated nature of this formation clearly indicates its post formation deformation and subsequent cementation. The elephant skin weathering is characteristic feature of the dolomitic limestone.

Chert

Chert and flint nodules found in dolomitic limestone are mostly siliceous but slightly calcareous nature of these nodules have also been noticed in the east and S.E. of village mondri outcrops of microcrystalline silica (chert and flint) in the form of insitu boulders are seen and these are found to be slightly phosphatic near the contact of dolomitic limestone. Near village chidhkhera, chert interbedded with dolomitic

vary in color from grey to dark brown and consist of medium to fine grained quartz cemented in ferruginous and siliceous matrix. The shales are highly laminated, fractured and friable in nature. The color varies from greenish brown to pink at places reddish with micaceous stone. Ripples marks and mud cracks in the shales are developed in sulgaon and sidhwarkoot area.

Primary sedimentary features i.e. ripple marks current bedding and graded bedding is quite common. Quartzite often shows intercalation and interbedding of shales and is traversed by quartz veins of varying magnitude across and along the bedding plains.

Bagh beds

The bagh beds are represented by niwar sandstone, coralline limestone and nodular limestone. Niwar sandstone is the basal member of bagh beds and it occurs as patches in coralline limestone along the nala section. It is fined grained, white to dull in color and upper surface is calcareous in nature. These formations are exposed around agrawara.

Coralline limestone is best exposed in the nala section at village agrwara. It exposures are also seen in guljiri and khokarnala near villages naya and astaria. It is fine to medium grained and color varies from yellowish to dull white and at places light pink to brown.

Lametas

Lametas in the area are represented by sandstone and thin layer of limestone. The sandstone is occasionally conglomeratic in nature. The lametas are exposed in vicinity of katkut, ghatia, salgaon, rawatpulasia etc. in the form of mounds and low redges. Lametas sandstone is medium to coarse grained, paler dirty brown pink to green in colour.

Deccan tarps

Bedded lava flows over lie the intra-trappean and at places of the vindhyan. The basaltic flows are black to dark grey in color fine to medium grained, hard, and compact and have uniform texture and composition over wide area. These flows form


State Level Environmental
Assessment Authority, M.P.
(EPCO)

Paryavaran Parisar
E-5, Arera Colony, Bhopal (M.P.)

समिति द्वारा अनुमोदित

DISTRICT KHARGONE SURVEY REPORT ON OTHER MINOR MINERAL

प्रधारी अतिवारी

डि. (सि.)

plateau in the area. The basic rocks are also seen as intrusive near the village's sulgaon, kariakund, surtipura etc.

Amygdaloidal nature has also been observed in the basalt in the area. Geodes are also quite common calcite veins are also seen in the basalt and recored aroud villages pati, jhaklia, darvelia, gandhawal, palwat, limdi, sewli, thar, atarsambcha, masauda, sindhi, kiradia, chandwari, hirakherai, palsud, jalkheda and minimata. The most promising calcite veins were recorded around chaklia, damlia, gandhawal, galkheda and masoda villages.

Recent

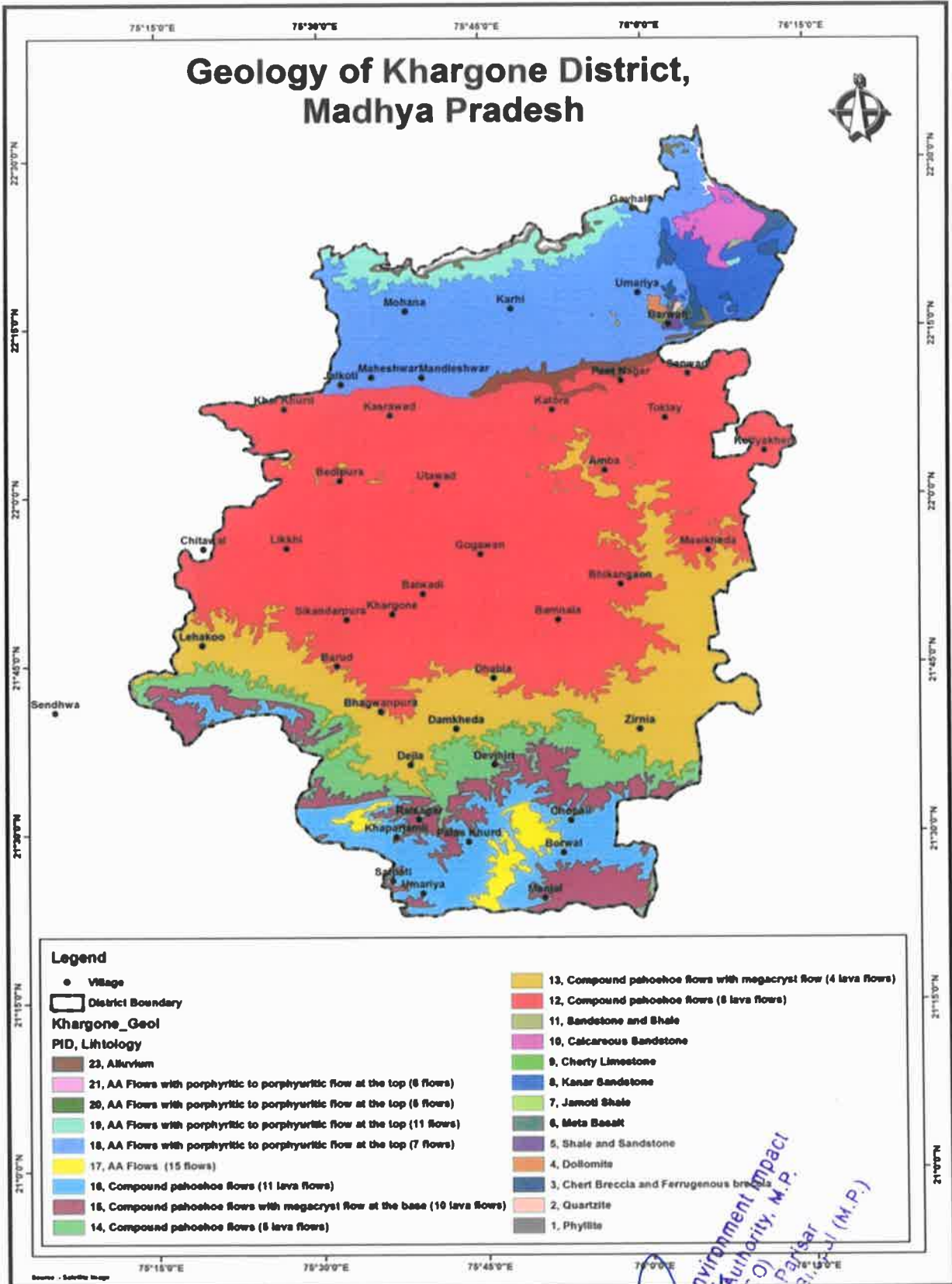
Recent formations in the area are represented by alluvium, boulder bed and calc-tuffa which are covering the older rocks.

समिति द्वारा अनुमोदित

प्रभारी अधिकारी
जनित कार्यालय
जिला-खरगोण (प्र.प्र.)


State Level Environment Impact
Assessment Authority, M.P.
(EPCO)
Paryavaran Parisar
E-5, Arera Colony, Bhopal (M.P.)

Geology of Khargone District, Madhya Pradesh



समिति द्वारा अनुमोदित

State Level Environment Impact Assessment Authority, M.P.
 Paryavaran Parishad
 E-5, Arera Colony, Bhopal (M.P.)

प्रभारी अधिकारी
 खनिज सेवा
 जिला कार्यालय (म.प्र.)

Mineral Wealth

Besides vast resource of building material, the district has few mineral of economic importance. Calcite, clay, dolomitic limestone, coralline limestone, inter trappean, tuffa limestone, fluorite, iron ore, limestone, manganese ore and glass sand are some of the important mineral. Showing of ochre (red and yellow) and rock phosphate have also been reported. Mineral wealth of Khargone district has been shown in **Map No. 5**

Calcite

In barwaha tehsil of district occurrences of calcite have been recorded in near umaria, barwaha and jamunia. The calcite is white, grayish white to yellowish white in color, massive, crystalline and mostly semi transparent in nature. The width of calcite veins ranges between 2-3 meters.

Clay

Around barwaha, occurrences of clay have been recorded in the limestone near chorbaoli, in a well below 3 meters cover of black soil and basalt. The color of the clay ranges from white, grayish white to pinkish white.

Dolomitic limestone

Outcrops of dolomitic limestone have been recorded and studied in detail from north of barwaha in odhalinala section near naya para in choral river and its western bank, south of village chorbaoli in a NS trending ridge west of nandia, north of jantimata and NW of village tiramia in kanar river and its western bank.

General strike direction of dolomitic limestone recorded in nayapara area is NNE-SSW. With a dip varying from 25° to 45° WNW direction. The barwaha area the rock is relatively free from siliceous bands and is been worked extremely for lime burning. In chorbaoli area the rock is grayish white to pink in colour. In nandia area it is grayish white to grey with dominace of quartz and chert veins. In jaintinala area the rock is hard compact, whitish grey, pink to dark grey.

Coralline limestone

Near villages naya and Astaria in guljhiri and khilarnala bed, small exposer of coralline limestone have been observed. The limestone is fine to medium grain

समिति खण्ड अनुसंधान

DISTRICT KHARGONE SURVEY REPORT FOR OTHER MINOR MINERAL

प्रभारी अधिकारी

जिला खण्ड

State Level Environment Impact Assessment Authority, M.P.
(EPCO)
Paragran Parisar
S. Arera Colony, Bhopal (M.P.)

compact rock rich in bryozoa and bivalved fossils besides small form of ostria. It is yellowish white light pink to brown and horizontally bedded.

In an area of 0.364 sq. km. near village agawara D.G.M. M.P. has estimated about 1.96 million tones of reserve of this limestone. Overall analysis of this limestone gives more than 45% CaO and less than 3% of MgO.

The borehole data has revealed in increasing trend of over burden and limestone thickness, towards north and it needs further check, in respect of economic viability of OB/ore ratio.

Inter trappean limestone

Occurrence of this limestone has been recorded from kadwalia and rupabaldi villages. The limited extent, limited thickness and variation in grade of this limestone clearly indicate that it may not be of any economic interest.

Tuffa- limestone

The occurrence of tuffaceous limestone has been recorded in a nala, south of chiktimondri though it is analyzing 51% CaO, but due to restricted occurrence, it has no economic significance.

Fluorite

Occurrence of fluorite has been recorded as disseminations and criss-cross veinlets in a quartz porphyry dyke. It is purple to bluish white in color. There occurrence are having lateral extension of 150 meters in WNW-ESE direction. In koteswar area of barwaha tehsil also occurrences of fluorite have been noticed. These occurrences are not of any economic importance.

Iron -ore

Iron ore in the area is associated with ferruginous breccias of bijawar formation in chiktimondri area a reserve of about 2.25 million tones of iron ore bearing breccias has been estimated. The iron ore is mostly massive but occasional development of specular iron ore (specularite) is also noticed. In mehdikhera, an area of about 6000 sq. m. is seen occupied by old workings with the deposit of limonitic iron ore and reserve

समिति द्वारा अनुमोदित

प्रभारी अधिकारी

DISTRICT KHARGONE SURVEY REPORT FOR OTHER MINOR MINERAL

जिला-खरगोन (म.प्र.)

State Level Environment Impact
Assessment Authority, M.P.
(EPCO)
Paryatan Parisar
E-5, Kora Colony, Bhopal (M.P.)

of about 3.0 million tones. The Depth of iron ore deposit is about 10 m below ground level.

Manganese ore

Occurrence of manganese ore reported around village's nandia and agrwara of barwaha tehsil near tirania. The manganese ore, like iron ore is also found associate with bijawar breccias. The old working area is NNW direction of tirania village in the form of shaft and underground excavations. Mn ore is associated with cherty and calcareous breccia and dolomitic limestone.

Glass sand

Occurrences of glass sand have been recorded in the area of pirakala and karondiakhedha the sand is friable and white in color.

Building material

Large heaps of sandstone is found in nearby ghatia stone quarry area. Narmada sand is also used for this purpose.

5. DRAINAGE AND IRRIGATION PATTERN

The district area is mainly drained by the Narmada River and its tributaries. *Goi, Beda, Kudi, BorarDondar, Deb, Nahali and Bhongali* Rivers flow from south to north while *Kharki, Gomathi, Malan and Makeswari* rivers flow from north to south in the southern bank of Narmada on the eastern part of the district.

Choral is the main river draining into the northern bank of the river Narmada. These major rivers are perennial to some extent and retain some water even during summer months. All the small Nallahs which feed the major streams during the monsoon, Remain dry during summer. The drainage pattern is mostly dendritic to sub-dendritic in dissected plateau and hilly area, while it is parallel to sub-parallel in plain area. However, a characteristic radial drainage is observed in the Basaltic terrain, south of Segaoon and east of Sendhwa in between longitudes E 75 15' to E 75 30' and latitudes N 18 15' to N 18 30'.

समिति द्वारा अनुमोदित

DISTRICT KHARGONE SURVEY REPORT FOR OTHER MINOR MINERAL

State-Level Environment Impact
Assessment Authority, M.P.
(EPCO)
Paryavaran Pariksha
Bhokra Colony, Bhopal (M.P.)

प्रभारी अधिकारी

22 30' to 22 45'. The streams appear to be fractured and joint controlled in the basaltic terrain.

Narmada River

The Narmada also called the Rewa, is a river in central India and the fifth longest river in the Indian subcontinent. It is the fourth longest river that flows entirely within India, after the Ganga, the Godavari, and the Krishna. It is also known as "Life Line of Madhya Pradesh" for its huge contribution to the state of Madhya Pradesh in many ways. It forms the traditional boundary between North India and South India and flows westwards over a length of 1,312 km (815.2 mi) before draining through the Gulf of Cambay into the Arabian Sea, 30 km (18.6 mi) west of Bharuch city of Gujarat.

In Khargone district Narmada is the main river flowing from the central part of the district. The River Narmada flows along a path of 88 kilometres inside the district. The main drainage is formed being Narmada river and various small nalas and rivulets joins to Narmada. The Tapti drainage system extends in a limited area along the southern boundary of the district.

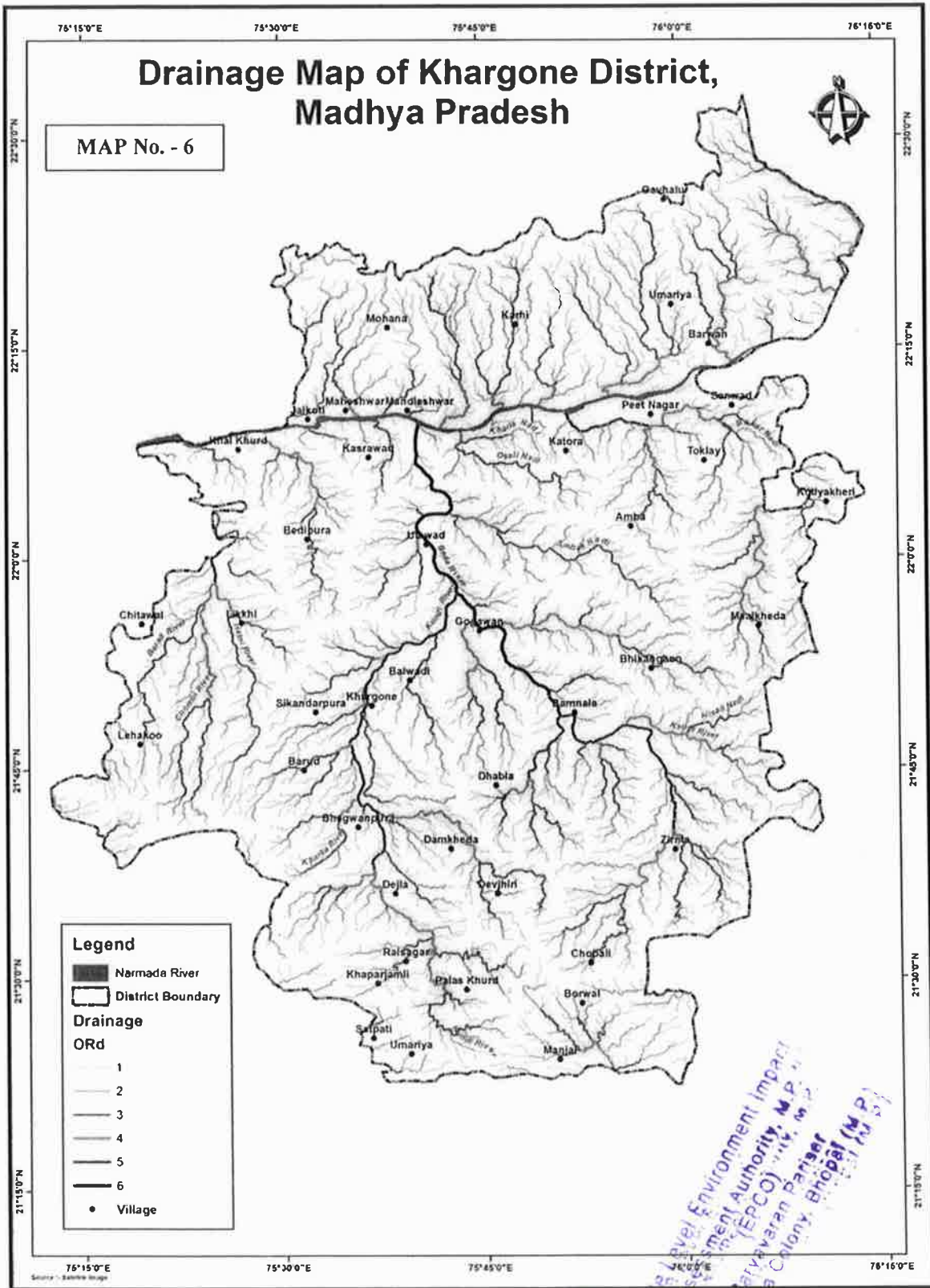
River Kunda

Kunda river is a large tributary of Narmada from Nimar region, originated from forest, Amba and Sirvel village and it flows from Village Pipalzhopa, (Block Bhagwanpura,) to Village Hopa, (Block Kaswarad). It has a length of approximately 169Kms. and its catchment area of 3825 sq. km. This river is situated in the west directions of Khargone but it river flows from South to North which passes through four block of Khargone district -Bhagwanpura, Goganwa, Khargone, and Kasrawad..

River Beda

River Beda is a tributary of river Narmada which is flowing from south to the north direction in khargone district.

समिति द्वारा अनुमोदित
 State Level Environment Impact
 Assessment Authority, M.P.
 (EPCO)
 पर्यावरण प्रभाव
 आँकलन प्राधिकरण (म.प्र.)
 प्रभारी अधिकारी
 राजिज शाखा
 जिला-खरखोन (म.प्र.)



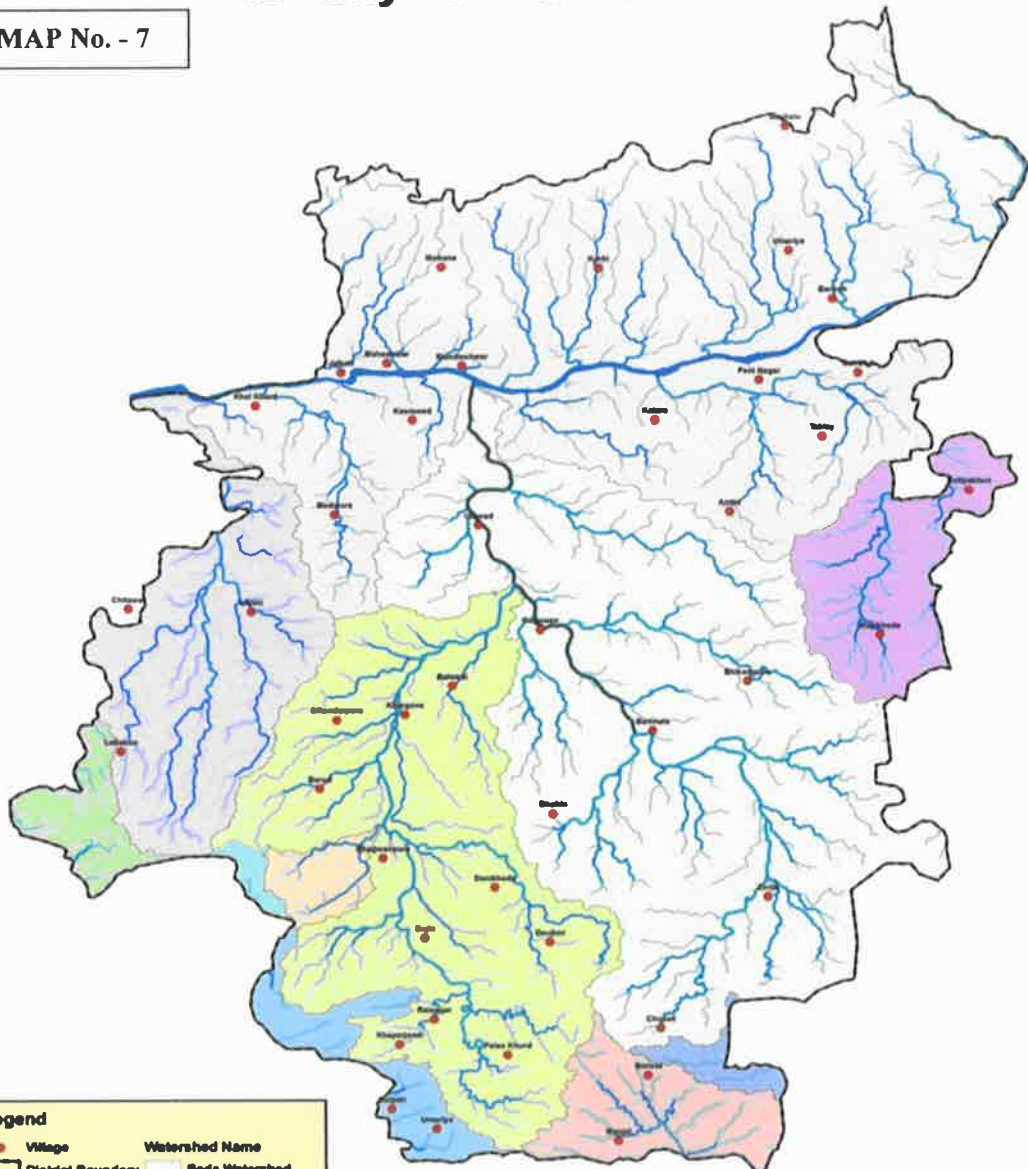
समिति द्वारा अनुमोदित

Signature

प्रभारी अधिकारी
बन्धु चम्पा
जिल्हा खर्गोन (म.प्र.)

Watershed Map of Khargone District Madhya Pradesh

MAP No. - 7



Legend	
● Village	Watershed Name
□ District Boundary	Beda Watershed
— Narmada River	IQ11 Watershed
Order No	IQ12 Watershed
1	IQ13 Watershed
2	IQ14 Watershed
3	IQ15 Watershed
4	IQ16 Watershed
5	IQ17 Watershed
6	IQarka Watershed
	Kundi Watershed
	Narmada Watershed



समिति द्वारा अनुमोदित

प्रभारी अधिकारी
जनित शाखा
खरबौन (म.प्र.)

State-Level Environment
Paryavaran Parlsar
E-5, Arera Colony, Bhopal (M.P.)

DISTRICT KHARGONE SURVEY REPORT FOR OTHER MINERAL

6. LAND UTILISATION PATTERN IN THE DISTRICT: FOREST, AGRICULTURE, MINING ETC.

Land use/land cover (LULC) changes are main issues of universal environment change. The Satellite remote sensing data with their monotonous nature have proved to be rather useful in mapping land use/land cover decorations and changes with time. Quantification of such changes is conceivable through GIS techniques even if the the subsequent spatial data sets are of dissimilar scales or resolutions. Such studies have helped in considerate the dynamics of human happenings in space and time. Land use refers to man's activities.

Table 5 LandUse Pattern of the district

SN	Class	Area in Ha	Percentage of coverage
1	Agricultural Plantation	121.00	0.02%
2	Aquaculture	8.00	0.00%
3	Barren rocky	3,542.00	0.44%
4	Canal/drain	992.00	0.12%
5	Cropland	4,84,357.00	60.54%
6	Deciduous (Dry/Moist/Thorn)	1,40,035.00	17.50%
7	Fallowland	1,105.00	0.14%
8	Gullied/Ravenous land	2,900.00	0.36%
9	Industrial	921.00	0.12%
10	Lake/Ponds	854.00	0.11%
11	Mining/Quarry	344.00	0.04%
12	Reservoir/Tank	7,796.00	0.97%
13	River	10,925.00	1.37%
14	Rural	7,863.00	0.98%
15	Scrub Forest	56,646.00	7.08%
16	Scrub land	78,917.00	9.86%
17	Tree Clad Area	444.00	0.06%
18	Urban	2,254.00	0.28%
	Total	8,00,024.00	100.00%

समिति द्वारा अनुमोदित

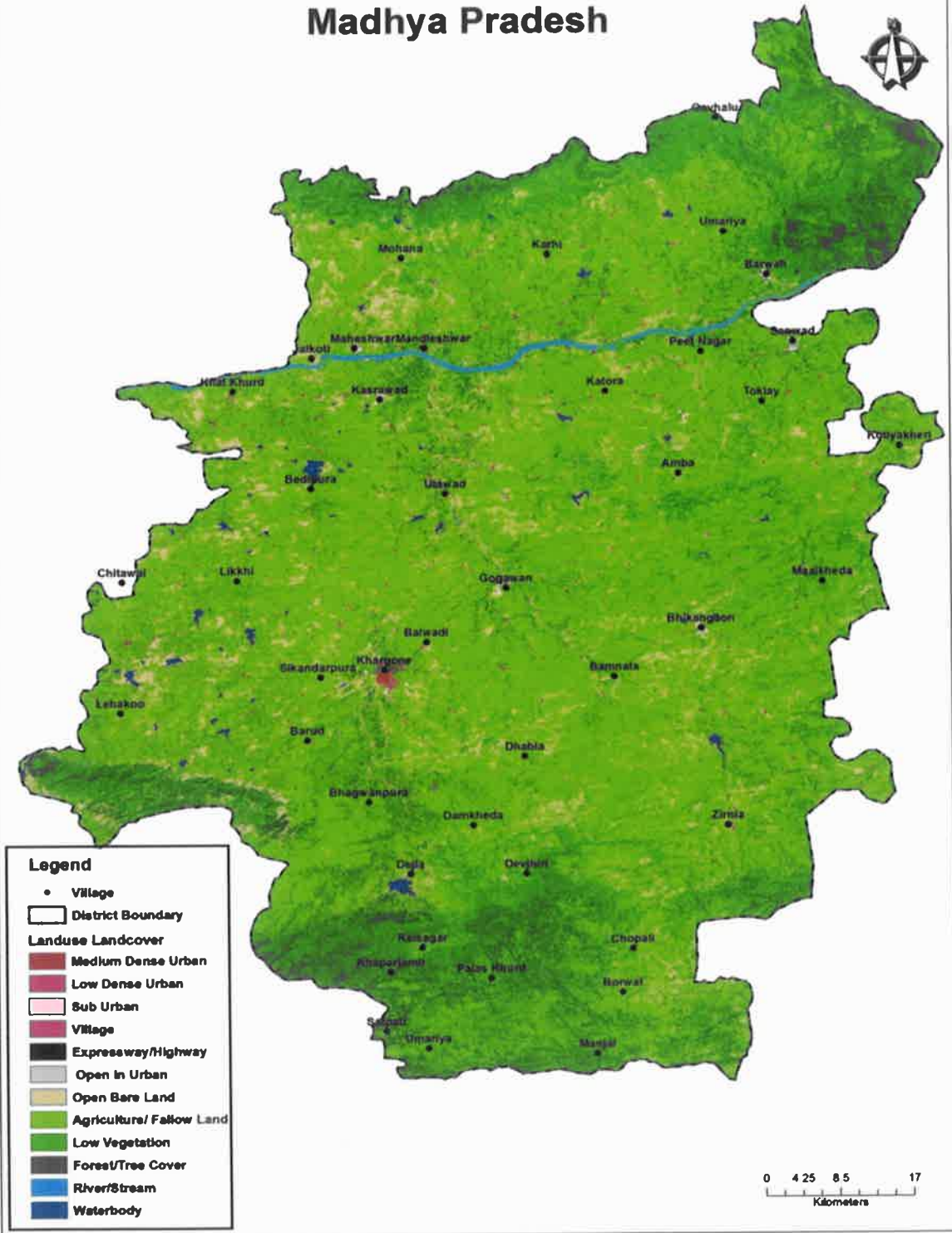
प्रभारी अधिकारी
बनिय आजा

DISTRICT KHARGONE SURVEY REPORT FOR STATE MINOR (MINERAL)

Assessment Authority, M.P.
(EPCO)

Paryavaran Parisar
E-5 Arera Colony, Bhopal (M.P.)

Landuse Landcover Map of Khargone District, Madhya Pradesh



Source - Satellite Image

(Handwritten Signature)

समिति द्वारा अनुमोदित

प्रभारी अधिकारी
बनिय शाखा

DISTRICT KHARGONE SURVEY REPORT FOR OTHER MINOR MINERAL

State-Level Environmental Impact Assessment Authority, M.P. (EPCO)

Paryavaran Parishad, Colony, Bhopal

7. SURFACE WATER AND GROUND WATER SCENARIO OF THE DISTRICT

The rocks occurring in the district range in age from Palaeoproterozoic to Quaternary. About 40 % of the district, in the eastern, central and northern (adjoining the Narmada river) part, is covered with alluvium. Ground water occurs under phreatic as well as confined conditions. The water bearing properties of different hydrogeological units occurring in Khargone District are described below. Hydrogeology of the district is shown in Plate-II.

Archaeans and Metamorphic rocks equivalent to Aravallis

The Archaean Group of rocks, comprising granite, phyllite, dolomite, quartzite, chert breccia etc are exposed in the north-western part and are faulted near the Narmada River. Weathered and fractured Granite forms a potential aquifer in the area.

Deccan Trap

Deccan traps, which makes for about 50% of the entire district occur as lava flows in the western and southern part of the district. The phreatic aquifer in weathered/vesicular basalt are tapped by dugwells while the deeper confined aquifers are tapped by drilling tube wells. The yield of dug wells ranges from 120 to 180 liters per minute, but in the canal command area, due to substantial recharge from canal seepage, sustains a good discharge.

Alluvium

The alluvial aquifer system in the district is highly potential. Two to three granular zones and at places more number of potential granular zones comprising of fine to medium to coarse grained sand, gravel and pebbles and laterite are encountered in alluvium. The top phreatic aquifer range in thickness from 2 to 10m and is

समिति द्वारा अनुमोदित
 State Level Environment In-charge
 प्रभारी अधिकारी
 सजिज शाखा
 DISTRICT KHARGONE SURVEY REPORT FOR ENVIRONMENT (M.P.)
 (E.P.C.R.)
 Parvavaran Parisar
 E-5, Arera Colony, Bhopal (M.P.)

encountered in the depth range of 4 to 20 mbgl. It appears that all the alluvial aquifer zones constitute a single aquifer system - the unconfined aquifer and a number of deeper aquifer zones separated by thick clay zones. The deeper aquifers are of semi-confined to confined nature with varying potentiometric heads. The yield of alluvial aquifers ranges from 180 to 900 litres per minute.

8. RAINFALL OF THE DISTRICT

The normal annual rainfall of Khargone district is 835 mm. The maximum rainfall received during south west monsoon period i.e., June to September about 92.8% of the annual rain fall received during monsoon season. Only 7.2% of the annual rainfall takes place between October to May period. Thus, surplus water for ground water recharge is available only during the southwest monsoon period. During the south west monsoon season the relative humidity generally exceeds 85% (August month). In the rest of the year is drier. The driest part of the year is the summer season, when relative humidity's are less 34% April is the driest month of the year.

CLIMATIC CONDITIONS

The climate of Khargone district, M. P. is characterized by a hot summer and general dryness except during the south west monsoon season. The year may be divided into four seasons. The cold season, December to February is followed by the hot season from March to about the middle of June. The period from the middle of June to September is the south west monsoon season. October and November form the post monsoon or transition period. The normal maximum temperature received during the month of May is 41.8°C and minimum temperature of Khargone district is 34°C and 19.6°C, respectively. The wind velocity is higher during the pre-monsoon period as compared to post monsoon period. The maximum wind velocity 9.0km/hr. observed during the month of June and minimum 2.5 km/hr. during the month of December. The average normal annual wind velocity of Khargone district is 4.9km/hr.

समिति द्वारा अनुमोदित

(Signature)

प्रभारी अधिकारी
खनिज शाखा
जिल्हा कार्यालय (म.प्र.)

DISTRICT KHARGONE STATE REPORT FOR OTHER MINOR MINERAL

Assessment Authority, M.P.
(EPCO)

Paryavaran Parishad
E-5, Arera Colony, Bhopal (M.P.)

The month wise rainfall of Khargone district for last three years has been shown below in the table:-

Table No.6 Monthwise Rainfall

Year	2019	2020	2021
January	0	0	0
February	0	0	0
March	0	0	0
April	0	0	0
May	0	0	0
June	66.20	235.33	96.14
July	274.66	188.51	148.23
August	391.31	290.16	124.68
September	243.94	192.80	228.73
October	42.11	4.54	52.01
November	0	0	0
December	0	0	0
Total	959.24	892.80	649.79

9. DETAILS OF THE MINING LEASE IN THE DISTRICT AS PER THE FORMAT :-

The 16 Column in A3 size paper is annexed with the report as annexure R1.

सामाजिक जल जनुमोदित

प्रभारी अधिकारी
खनिज शाखा
खनिज-खनिज (म.प्र.)

(Signature)

State Level Environment Impact
Assessment Authority, M.P.
(EPCO)
Bhawarjan Barisar
Bhawarjan Barisar, Bhopal (M.P.)

10. DETAILS OF ROYALTY OR REVENUE RECEIVED IN LAST THREE YEARS

Table No.7

Revenue mineral wise						
s.n.	Year	Gitti	Boulder	Stone	Murum	soil
1	2019-20	72271644	0	0	110047030	35550000
2	2020-21	69104404	200000	0	8916201	3000000
3	2021-22	45584987	0	240000	4454390	600000

11. DETAILS OF PRODUCTION OF SAND OR BAJRI OR MINOR MINERAL IN LAST THREE YEARS

Production in cum

Table No.8

s.n.	Year	Gitti	Boulder	Stone	Murum	soil
1	2019-20	443826.240	0	0	1237139	190200
2	2020-21	504112.88	4000	0	166895.46	74620
3	2021-22	319963.46	0	1479.25	72012.45	4100

प्रभारी अधिकारी
जनित शाखा
समिति द्वारा अनुमोदित

खरबोन (म.प्र.)

Abam

State Level Environment Impact
Assessment Authority, M.P.
District Khargone Survey Report (for Other Mineral)
Paryavarah Bhopali (M.P.)
E-5, Arera Colony, Bhopal (M.P.)

12. MINERAL MAP OF THE DISTRICT-



समिति द्वारा अनुमोदित

(Signature)

प्रभारी अधिकारी
स्वनिज खास

State Level Environment Impact Assessment Report for Other Minor Mineral
DISTRICT KHARGONE SURVEY REPORT FOR OTHER MINOR MINERAL
(EPCO)

Paryavaran Parisar
E-5, Arera Colony, Bhopal (M.P.)

13. LIST OF LATTER OF INTENT HOLDERS IN THE DISTRICT ALONG WITH ITS VALIDITY

Table No.9

S. N.	Mineral	Lessee Name	Address & Contact Details	Letter of Intent No.&date	Area In Hectare	Period Of Lease Initial		Latitude	Longitude
						From	To		
1	2	3	4	5	6	7	8	9	10
1	Gitti	NILESH RAGHUVANSHI	9754785055-Khargone	2767-69 25-02-2022	2.000	Contract yet to be signed		21°48'04.658" N 75°34'17.654" E 21°48'04.060" N 75°34'22.860" E 21°48'01.750" N 75°34'20.119" E 21°48'0.754" N 75°34'18.589" E 21°48'0.434" N 75°34'13.721" E 21°48'04.658" N 75°34'17.654" E	Opencast
2	Gitti	ARUN NAYAK-SHRI GYANSINGH NAYAK-LOUNDI	9111185211 Khedihat barwah	2763-65 25-02-2022	2.000	Contract yet to be signed		Plan not submitted	Opencast
3	Murrum	Toshif s/o ajmuddin Khan	9826213881 Balsamund	10259-60 29-07-2022	2.00	Contract yet to be signed		Plan not submitted	Opencast



State Level Environment Impact
Assessment Authority, M.P.
(EPCO)
Paryavaran Parishad
C-5, Arera Colony, Bhopal (M.P.)

समिति द्वारा अनुमोदित

प्रभारी अधिकारी
खनिज शाखा
विज्ञान-पर्यायन (ख.प्र.)

14. TOTAL MINERAL RESERVE AVAILABLE IN THE DISTRICT –

Dolomit, Quartzite, basalt and Murum are the only minerals found in the district. About 90 % of the district is covered by Deccan trap basalt & its weathering product murum and have huge resources. Quartzite and chert breccia found over a small area. Except dolomite all other litho- units found in the district can be used as building material. About 30 to 35 % of the district is covered by quaternary sediments or alluvium and due to its high fertility are under cultivation.

15. QUALITY/GRADE OF MINERAL AVAILABLE IN THE DISTRICT

The dolomite is the only mineral, which can be used in various industries. Only one lease of dolomite is sanctioned in the district. MP DGM did not carry out prospecting to assess the quality and quantity in the district.

16. USE OF MINERAL

Dolomite- Dolomite is the only major mineral found in the Khargone around Barwaha. It can be used in various industries like Ferro – Manganese, Glass, Fertilizer Industry, Lime, Refractory, Fertilizer/Extender and Cutting polishing Industry. But most of the dolomite bearing areas comes within the Barwaha township area or in forest areas. The other minerals like basalt, quartzite and murum are useful as building material are being used for the same.

17. DEMAND AND SUPPLY OF THE MINERAL IN THE LAST THREE YEARS

Except NE part around Barwaha, whole of the district is occupied by basalt and its weathering products soil and murum. Thus, mineral potentials for road metal and other building material are immense. Bajri & black sand,

State Level Environment
Assessment Authority (EPCO)
Paryavaran Parisar
Mara Colony, Bhopal (M.P.)

DISTRICT KHARGONE SURVEY REPORT FOR OTHER MINERAL RESOURCES

समिति द्वारा अनुमोदित

प्रभारी अधिकारी
जिला-खरगोन (M.P.)

Narmada sand is associated with river. It is derived from the weathering and erosion of basalt and other litho units exposed over the catchment area of rivers.

Table No.9 DEMAND & SUPPLY OF MINERALS IN LAST THREE YEARS

s.n.	Year	according to Demand					Remark
		Gitti	Boulder	Stone	Murum	soil	
1	2019-20	443826.240	0	0	1237139	190200	Minor mineral Such as stone/ Gitti, murum ,is produced & supply according to demand in local market
2	2020-21	504112.88	4000	0	166895.46	74620	
3	2021-22	319963.46	0	1479.25	72012.45	4100	

18. MINING LEASES MAP

Map (Arc view/google earth compatible attached in CD), enclosed as map No.6 & 7 with the report.

19. DETAILS OF THE AREA OF WERE THERE IS A CLUSTER OF MINING LEASES

Table No.10

S.No	Name	Area	Khasra No	Village	Tehsil	Mineral
Cluster-1						
16	vishwashwajoshi	2	5	Mominpura	Khargone	Gi
18	Piyush S/O Suresh Chandel	1.315	7	Mominpura	Khargone	Gi
53	Sundaram suppliers 2.853	2.853	5	Mominpura	Khargone	Gi
Cluster-2						
28	Chandrashekhar adampura	2	25	Aadampura	Khargone	Gi
29	Sa sh Jaiswal	3.5	7	Mominpura	Khargone	Gi
42	Samraddh muchal	1.68	25	Aadampura	Khargone	Gi
75	Ashok maina	3	47, 48	Aadampura	Khargone	Gi
90	Nilesh Raghuvanshi	2	7	Mominpura	Khargone	Gi
Cluster-3						

(Signature)

समिति द्वारा सुमोदित

प्रधानी अधिकारी
खनिज खाखा

DISTRICT KHARGONE SURVEY REPORT FOR OTHER MINOR MINERAL

जिला-खर्गोन (म.प्र.)

Assessment Authority, M.P.
(EPCO)
Paryavaran Parisar
Arera Colony, Bhopal (M.P.)

7	Dharmendra S/o Shri Ashok Chand Jaiswal	2	113/1	Piparkheda	Gogawan	Gi
12	Maya raghuwanshi	2	44574	Piparkheda	Gogawan	Gi
88	Vedika Corpora on	3.392	113/1	Piperkheda	Gogawan	Gi
Cluster-4						
19	Sudhir Nikhoriya	2	30	NULLIbrahimpura	Gogawan	Gi
22	Dheeraj yadav	2	30	Ibrahimpura	Gogawan	Gi
59	prashunn mali	2	30	Ibrahimpura	Gogawan	Gi
Cluster-5						
5	Balaji stone dipesh vijay	1.6	148/1	Muralla	Barwaha	Gi
13	Balaji stone crusher	2	148/1	Muralla	Barwaha	Gi
17	Charanjeet Singh Bha ya	2.023	248/1	Muralla	Barwaha	Gi
Cluster-6						
11	Shekhar Patwala	4	83	Jhigdi	Barwaha	Gi
24	Sanjay Patwala S/O Govrdhan Patwala	2	83	Jhigdi	Barwaha	Gi
Cluster-7						
56	Naveen Agrawal S/o Shri Pursho am	4	50/1/2	Chindiya	Maheshwar	Gi
57	Sunita Agrawal Shri Pursho am Agrawal	2	50/1/2	Malakshakhed	Maheshwar	Gi
Cluster-7						
76	Sadik Khan Shri Shabbir Khan	2	242	Balkhand	Kasrawad	Murram
79	Bhuresingh chauhan	2	253	Balkhad	Kasrawad	Murram
80	Wasim mewa	2	50	Balkhad	Kasrawad	Murram
82	Sadiq khan	2	234	Balkhand	Kasrawad	Murram
83	Trilok S/o Madhusudan Patel	2	253	Balkhad	Kasrawad	Murram

समिति द्वारा अनुमोदित

प्रभारी अधिकारी
अभिज शाखा
जिला-खरखोज (म.प्र.)

State Level Environment Impact
Assessment Authority, M.P.
(EPCO)
Parvatan Parisar
E-5, Aera Colony, Bhopal (M.P.)

20. DETAILS OF ECO- SENSITIVE AREAS IN THE DISTRICT:

The district with a large forest covers but there are no declared ecologically sensitive areas as per the Guidelines of MOEF. Certain restrictions are binding as per the Forest Conservation Act, 1980 and provisions and restrictions are made in MMR 1996 and subsequent laws to bar any mining activity within a stipulated distance from any land declared as forest. More so provisions are made to get consent from high level committee before grant of any quarry lease within a distance of 250 M from forest. Even in case of already granted areas of mining leases/quarry lease or any activity directly or indirectly related to mining or any non-forest uses, Provisions are made and binding on the proponent to study the impact of non-forest activity mining of mineral and protect the ecological balance of the area.

21. IMPACT ON THE ENVIRONMENT (AIR, WATER, NOISE, SOIL, FLORA & FAUNA, LAND USE, AGRICULTURE, FOREST ETC.) DUE TO MINING ACTIVITY

While providing essential minerals for the use in our economies, uncontrolled mining can also have many adverse impacts on the environment and human health. Potential impacts include air and water pollution; mine waste disposal and land degradation. Hence, environmental impact assessment is essential.

The mining and allied activities in the project area have influence on environmental attributes. These attributes include: • Excavation • Construction of approach and haulage road • Drilling and Blasting • Loading and Transportation • Processing and Sizing of ores • Disposal of overburden/waste etc. • Stocking of low grade ores. • Site preparation.

समिति द्वारा अनुमोदित

प्रभारी अधिकारी
जनित शाखा

जिला-खरगोन

DISTRICT KHARGONE SURVEY REPORT FOR OTHER MINOR MINERALS

State Level Environment Impact
Assessment Authority (EPCO)
Paryavaran Parisar
E-5, Arera Colony, Bhopal (M.P.)

Minerals are non-renewable and limited natural resources and constitute vital raw materials in a number of basic and important industries. The extraction of minerals from nature often creates imbalances, which adversely affect the environment. The key environmental impacts of mining are on wildlife and fishery habitats, the water balance, local climates & the pattern of rainfall, sedimentation, the depletion of forests and the disruption of the ecology. Mining activities including prospecting, exploration, construction, operation, maintenance, expansion, abandonment, decommissioning and repurposing of a mine can impact social and environmental systems in a range of positive and negative, and direct and indirect ways. Mine exploration, construction, operation, and maintenance may result in land-use change, and may have associated negative impacts on environments, including deforestation, erosion, contamination and alteration of soil profiles, contamination of local streams and wetlands, and an increase in noise level, dust and emissions. Mine abandonment, decommissioning and repurposing may also result in similar significant environmental impacts, such as soil and water contamination. Beyond the mines themselves, infrastructure built to support mining activities, such as roads, ports, railway tracks, and power lines, can affect migratory routes of animals and increase habitat fragmentation..Mining can also have positive and negative impacts on humans and societies. Negative impacts include those on human health and living standards, for example. Mining is also known to affect traditional practices of Indigenous peoples living in nearby communities, and conflicts in land use are also often present, as are other social impacts including those related to public health and human well being.

The impacts of various mining and associated activities on the environmental components are discussed briefly in the following paragraphs:

समिति द्वारा अनुमोदित

प्रभारी अधिकारी
खनिज

DISTRICT KHARGONE SURVEY REPORT FOR OTHER MINOR MINERAL

State Level Environment Impact
Assessment Authority, M.P.
Paryavaran Parishad
-5, Arera Colony, Bhopal (M.P.)

Ecological Impacts of Opencast Mining:

1. Removal of all vegetation (flora) and thereby fauna from the area required for mining and other purposes.
2. Pollution of water in the surrounding water bodies due to leaching from overburden dumps and due to the pollutants from the other activities. This affects the aquatic ecology of these water bodies.
3. Dust in atmosphere, contributed by mining and associated activities, when deposited on the leaves of the plants in the surrounding areas may retard their growth.
4. Noise and vibrations due to blasting and operation of the machines drive away the wild animals and birds from the nearby forests.
5. Water scarcity caused due to the impacts of opencast mining on water regime affects the growth of vegetation and agriculture in and around the complexes.

Ecological Impacts of mineral handling and preparation:

1. Land clearance of almost all vegetation in the area earmarked for the construction of the mineral handling and preparation units.
2. Disturbances to fauna of the nearby areas from the noise and vibrations from the mineral handling and preparation units.
3. Impacts on aquatic ecology due to discharge of effluents from the units.
4. Retardation in vegetation growth in neighboring areas due to deposition of dust on the leaves.

Ecological impacts of other activities:

1. The growth of mining complexes need land and thus affects the ecology of the land and the surrounding areas.
2. Cutting and felling of the trees to meet the timber requirement for various purposes.

समिति द्वारा अनुमोदित

DISTRICT KHARGONE SURVEY REPORT FOR OTHER MINOR MINERAL

प्रभारी अधिकारी

बनिय शाखा

पिपल-खरबोज

State Level Environment Impact Assessment Authority, M.P.
Paryavaran Parishar
C-5, Arera Colony, Bhopal (M.P.)

3. Other impacts are similar to those of the activities mentioned above.

Action to Minimize the Impacts:

It is evident that mining and associated activities have considerable impacts on the ecology of the mining and the surrounding areas. These impacts are evident in most of the mining complexes in the country. In order to minimize the impacts the following actions can be thought out:

1. Plan the mining layout so as to have the least requirement of the forest land and take necessary steps for reclamation of the mined out land so that the forest land taken for the mining purposes can be brought back to forest use.
2. Develop a suitable compensatory forest.
3. Cut the trees to the minimum possible extent and to preserve the flora it would be appropriate to uproot the trees and plants and then establish them at suitable locations, may be in the areas for compensatory afforestation.
4. Develop a flora bank to preserve the typical floral species of the area so that these can be replanted and developed as and when needed.
5. Surface layout of the mining complexes be designed to have the least impacts on the ecology of the area.
6. The noise and vibration producing activities in the mines and the associated activities be planned to have the minimum possible intensity and impact on the wild life in the surrounding area.

समिति द्वारा अनुमोदित


प्रभारी अधिकारी
खनिज शाखा
जिला-खरगोन (म.प्र.)

State Level Environment Impact
Assessment Authority, M.P.
(EPCO)
Paryavaran Parisar
E-5, Arera Colony, Bhopal (M.P.)

22. REMEDIAL MEASURES TO MITIGATE THE IMPACT OF MINING ON THE ENVIRONMENT;

The environment management plan is prepared for considering the impacts and areas of concern, this covers management of air quality, noise pollution, land use pattern, water pollution, socio-economic conditions etc.

1 MANAGEMENT OF SOLID WASTE- At the end of the life of the mine the total waste should be utilized for reclamation of mined out area.

2 Management of land: The mined out land should be reclaimed by means of back-filling and plantation. The other utilized area like dump, subgrade stacked will be reclaimed by means of plantation. The selection of plant species will be based on the local soil conditions.

3 MEASURES FOR CONTROLLING WATER POLLUTION- The cause and source of pollution of water in the area could be attributed mostly to the surface run-off during rainy season. The following measures should be taken for preventing possible water pollution..

- No overburden or loose sediments should be kept in the working benches particularly during monsoon months.
- Check dam should be provided around the overburden dump sites to arrest flow of loose sediments before discharge into the drainage system of the region.
- Peripheral drain should be proposed to arrest the inflow of run-off water to the quarry area.
- A safety zone along both sides of the water course, if present in lease area, with dense afforestation should be proposed.
- A rain water harvesting structure should be built up in lower contour of the area, by which natural surface rain water.

4 MEASURES FOR CONTROLLING AIR POLLUTION- For the mine,

समिति द्वारा अनुमोदित

DISTRICT KHARGONE SURVEY REPORT FOR OTHER MINOR MINERAL

प्रभारी अधिकारी
खनिज क्षेत्र

जिला-खरगोन

State Level Environment
Assessment Authority, M.P.
(EPCO)
Bhopal (M.P.)

the only pollution occurs from dust (SPM) during vehicular traffic, blasting, loading / unloading etc. As the particles are heavy in nature, they settle easily in the immediate vicinity. The following different control measures should be proposed. • Construction of well-compacted roads. • Regular water spraying on roads and waste dumps by tankers. • Provision of dust collectors for the drilling machines • Controlled blasting • Supply of dust masks for the drill operators • Plantation of wide leaf trees, creepers, tall grasses around quarry sites, waste dumps, roads, colony and other surrounding barren zones.

5. NOISE ABATEMENT- The following measures should be taken to analyzing the adverse impact of noise, though negligible within the project area and its surrounding region. • Proper and regular maintenance of vehicles, compressors and jack hammers. • Provision of supplying earplugs for jackhammer drillers and compressor operators. • Provision of Green Belt (thick foliage) along the lease boundary and road.

6 SOCIO-ECONOMIC MEASURES- it is felt necessary to augment facilities in the fields of education, health and social awareness including concern for ecology. These are presented in a analyzing form in the following statement. It is necessary to create awareness among the people. The beneficial aspects of the following measures should be taken up by the mine as a periphery development of project. • Planting of trees and social forestry • Reduction in the consumption of fuel wood and encourage use of alternative fuels • Use of clean and boiled water • Reducing the consumption of alcohol • Saving from earnings • Personal hygiene • Regular health check In implementation of these measures, the mine management can contribute lot on the overall socioeconomic scenario of the region.

| समिति द्वारा अनुमोदित

प्रभारी अधिकारी
जनक शाखा
जिला-खरबोज (म.प्र.)

DISTRICT KHARGONE SURVEY REPORT FOR OTHER MINES

State Level Environment Impact
Assessment Authority, M.P.

(EPCO)
Paryavaran Parisar
E-5, Arera Colony, Bhopal (M.P.)

23. RECLAMATION OF MINED OUT AREA (BEST PRACTICE ALREADY IMPLEMENTED IN THE DISTRICT, REQUIREMENT AS PER RULES AND REGULATION, PROPOSED RECLAMATION PLAN);

All the mines in the district are operated by open cast method, for which the following planning is there for reclamation -The mining will commence from the top levels and advance towards lower levels, as the pit shall reach the maximum economical depth. Reclamation will be undertaken in such a manner that ultimate pit will be developed as water body. The topography of the final landform will consist of number of stepped benches. Plantation: Plantation will be done around the perimeter of the pit or boundary only. Gap filling plantation has been carried out in the safety barrier zone left around the mine lease area from the beginning of the mining operations. Additional plantation will be carried out in the inactive mining area. Once operations have ceased, all buildings and infrastructure will be removed. The top benches will be vegetated with appropriate native species. The lower benches will be formed as a shallow depression of retention pond/ rain water harvesting structure. The topography of the final landform within the void will consist of a number of stepped 06 m high benches. Fencing: Fencing (or a similar barrier) will be erected and maintained to exclude and prohibit the movement of persons and vehicles into areas that have been rehabilitated. The fencing will be routinely checked and repaired where necessary.

Necessity of Land Reclamation

It is necessary to reclaim the land affected by mining due to following reasons:

- To put the land into productive use like agriculture, forestry or recreational purposes.
- To check soil erosion from dump leading to destruction of watersheds and siltation of river.

समिति द्वारा अनुमोदित

DISTRICT KHARGONE SURVEY REPORT FOR MINOR MINERAL

प्रभारी अधिकारी

जिन्दा खरवोन (म.प्र.)

State Level Environment Impact
Assessment Authority, M.P.
(EPCO)

Paryavaran Parisar
E-5, Arera Colony, Bhopal (M.P.)

- Accumulation of huge quantity of water in worked out pits may pose threat to life and property.
- To combat adverse visual impact.

Reclamation Planning Implementation: - For successful reclamation following points are to be considered

- Listing inventory of pre-mining condition.
- Monitoring flexibility of mining programmed in the light of efficient land reclamation.
- Evaluation of the post mining requirements of the region and to decide on the needs and desire of the affected ground.
- To make reclamation planning suitable to techno economical and socio-political environment.
- To assess the physico- chemical characteristics of overburden.
- Extra cost of preservation, re-handling, spreading and leveling of subsoil and topsoil.
- Knowledge of hydro geological/geomorphological conditions.
- Aesthetic and or historic value of land.

समिति द्वारा अनुमोदित

प्रभारी अधिकारी
खनिज श्रमण
जिला-पर्यवेक्षण (म.प्र.)

24. RISK ASSESSMENT & DISASTER MANAGEMENT PLAN

In any mining operations, whether opencast and/or underground, work safety is taken care of by the Mines Act, the Coal Mines Regulation, 1957 and Rules framed there under. The risk to general public in the present case may arise from the following:

- i) Failure of dumps created by stones dug from incline cutting.
- ii) Flyrocks, during blasting operations, while driving inclines
- iii) Plying of trucks etc on public roads

Risk assessment is all about prevention of accidents and there is a need to be aware that there is the risk of an accident before steps can be taken to prevent it happening. It may not always be obvious that a workplace task could lead to an accident. This is why risk assessments are carried out. In risk assessment the words Hazards and Risks are often used. The Hazards and Risks are defined as below:

1. A hazard is anything that has the potential to cause harm.
2. The risk is how likely it is that a hazard will cause actual harm.

CONTROL MEASURES: -

In order to take care of hazard/disasters, the following control measures will be adopted:

A. General Measures

- All safety precautions and provisions of the Mine Act, 1955, the Coal Mines Regulation, 1957 and the Mines Rules, 1952 will be strictly followed during all mining operations;
- Entry of unauthorized persons will be prohibited;
- Fire fighting and first-aid provisions in the mines office complex and mining area;
- Provisions of all the safety appliances such as safety boot, helmet, goggles

State Level Environmental Impact
Assessment Authority, M.P.
Paryavaran Parisar
E-5, Arera Colony, Bhopal (M.P.)

etc. will be made available to the employees and regular check for their use;

- Initial training and refresher courses for all the employees working in hazardous

premises; Under mines rules all employees of mines shall have to undergo the training at a regular interval;

- Working of mine, as per approved plans and regularly updating the mine plans;

- Cleaning of mine faces will be regularly done;

- Handling of explosives, charging and blasting will be carried out by competent persons only;

- Provision of magazine at a safe place with fencing and necessary security arrangement;

- Regular maintenance and testing of all mining equipment as per manufacturer's guidelines;

- Suppression of dust on the haulage roads;

- Adequate safety equipment will be provided at explosive magazine;

- Increasing the awareness of safety and disaster through competitions, posters and other similar drives.

B. Activity Specific Measures:-

Blasting :- Most of the accidents from blasting occur due to the projectiles, as they may some times go even beyond the danger zone, mainly due to overcharging of the shotholes as a result of certain special features of the local ground. Vibrations also lead to displacement of adjoining areas. Dust and noise are also problems commonly encountered during blasting operations.

Measures during Drilling and Blasting

- Drilling and blasting in quarry shall be done in accordance with the provisions of Mines Act, rules and regulations;

समिति द्वारा अनुमोदित

प्रभारी अधिकारी

जनित शाखा

DISTRICT KHARGONE SURVEY REP

जिला खरगोन (म.प्र.)

State Level Environment Impau
Authority, M.P.
(EPCO)
Paryavaran Parisa
E-5, Arera Colony, Bhopal (M.P.)

- Adequate safety measures will be taken during blasting operations in the quarry so that men/machines are not affected;
- Ground vibration due to blasting will be controlled by following:
 1. Reducing the explosive charge per delay;
 2. Reducing the spacing and burden per blast;
 3. Reducing the amount of explosive charged per blast;
 4. Proper controlled rock movement during blast by using suitable initiating sequence and delay.
- Shots will not be fired except during the hours of day light or until adequate provision is made for artificial lighting and the holes charged on a particular day will be fired on the same day;
- Shots, if fired after hours of daylight, should be muffled so that the flying fragments from the blasting material do not project beyond a distance of 10-m from the place of blasting;
- Adequate shelters or other protective structures will be provided to the workers at all times;
- The shot fire will give sufficient warning by effective signal over the entire area falling within a radius of 500-m;
- If a single shot exploder is used or if blasting is done with ordinary detonator, the shotfirer will not fire more than fifty shots in one shift, but if multishot exploder is used, the number can go up to eighty; and
- During the approach and progress of an electrical storm, adequate precaution will be taken.

Overburden Dumps : The overburden dumps may cause landslides. High overburden dumps created at the quarry edge may cause sliding of the overburden dump or may cause failure of the pit slope due to excessive loading, thereby causing loss of life and property.

समित्त
दित

प्रभारी अधिकारी

DISTRICT KHARGONE SURVEY REPORT FOR OTHER MINOR MINERAL

जिला खरगोन (म.प्र.)
Assessment Authority
(EPCO)
Parvavaran Parisar
E-5, Arera Colony, Bhopal (M.P.)

Measures to Prevent the Danger of Overburden

- A stone wall should be built around the toe of each active dump at a distance of about 50-m from the toe;
- To prevent the failure of overburden slopes, especially during the rainy season, the following precautions will be taken;
 1. Proper terracing of the dump slopes, with a maximum bench height of 30-m;
 2. In flat areas where the dumping operations have come to an end, the overall slope angle should be flattened.
- Planting vegetation as early as possible over the overburden dump slopes;
- Provide drainage channels along the overburden dump toe for additional protection, in such a way that a distance of 15 m should be maintained left between the overburden dump and the bench; and
- If a mine is abandoned, the bench and overburden dump should be separated from each other by digging a trench of 6 to 10 m width.

Heavy Machinery: Most of the accidents during transport of dumpers, trucks, proclams and ripper dozers and other heavy vehicles are often attributable to mechanical failures and human errors.

Measures to Prevent Accidents due to Trucks and Dumpers

- All transportation within the main working area should be carried out under the direct supervision and control of the management;
- The vehicles must be maintained in good repairs and checked thoroughly at least once a week by a competent person authorized for this purpose by the management;
- Broad signs should be provided at each and every turning point specially for the guidance of the drivers at night;

समिति अनुमोदित

प्रभारी अधिकारी

DISTRICT KHARGONE SURVEY REPORT FOR OTHER MINOR MINES

जिला खरगोन (म.प्र.)

State Level Environment Impact Assessment Authority, M.P. (EPCO)

Paryavaran Parisar
E-5, Arera Colony, Bhopal (M.P.)

- To avoid dangers while reversing the trackless vehicles, especially at the embankment and tripping points, all areas for reversing of lorries should, as far as possible, be made man free, and there should be a light and sound device to indicate reversing of trucks;
- A statutory provision of the fence, constant education, training etc. will go a long way in reducing the incidence of such accidents.

Water Logging : Water logging in the mine site can be avoided by adopting following measures:

- Position of water body should be correctly known;
- Draining of mine water by suitable capacity pumps.

Disaster Management Plan:

Objective: The disaster management plan is aimed to ensure safety of life, protection of environment, protection of installation, restoration of production and salvage operations in this same order of priorities. For effective implementation of the disaster management plan, it should be widely circulated and personnel training through rehearsals/drills. The objective of the disaster management plan is to make use of the combined resources of the mine and the outside services to achieve the following:

1. Effect the rescue and medical treatment of casualties;
2. Safeguard other people;
3. Minimize damage to property and the environment;
4. Initially contain and ultimately bring the incident under control;
5. Identify any dead;
6. Provide for the needs of relatives;
7. Provide authoritative information to the news media;
8. Secure the safe rehabilitation of affected area;

समिति द्वारा अनुमोदित

प्रभारी अधिकारी
खनिज शक्ति
जिला-खरगोन (M.P.)

(Signature)

DISTRICT KHARGONE SURVEY REPORT FOR OTHER MINOR MINERAL
State Level Environment Impact
Assessment Authority, M.P.

(EPCO)
Paryavaran Parisar
E-5, Arera Colony, Bhopal (M.P.)

9. Preserve relevant records and equipment for the subsequent inquiry into the cause and circumstances of the emergency.

In effect, it is to optimize operational efficiency to rescue rehabilitation and render medical help and to restore normalcy.

25. DETAILS OF THE OCCUPATIONAL HEALTH ISSUES IN THE DISTRICT. (LAST FIVE-YEAR DATA OF NUMBER OF PATIENTS OF SILICOSIS & TUBERCULOSIS IS ALSO NEEDS TO BE SUBMITTED);

Silicosis is an occupational disease which profoundly affects the work productivity, economic and social well-being of workers, their families and dependents. It is a disease of the lungs. Continuous exposure to dust, silica, cement and fine glass particles inhaled while working in places such as stone or cement mines results in their build-up in the lungs. The disease is caused by exposure to silica, which is released as dust particles when engineered stone is mined or cut, drilled and polished. The patient's physical stamina dwindles over a period of time; he gets progressively weaker and eventually succumbs to death. The gravity of silicosis can be assessed from the fact that its patients have little hope of survival. They are left with no alternative other than to die a slow and painful death. The problematic areas are area of flagstone, granite and marble cutting /polishing units and mines, slate mining majorly. The Hindu Daily newspaper on Sept. 28, 2019, quoted "Miners of Ganj Basoda district in Madhya Pradesh suffering from silicosis on Friday decided to organise themselves to press for adequate compensation and appeal to the government for right treatment, instead of being treated for tuberculosis. Around 10,000 miners from 40 villages in the district have been facing the threat of the respiratory disease, said activist Pramod Pateriya in Bhopal. An occupational disease, silicosis is more prevalent among miners who are exposed to dust containing crystallised silica. Over time, it could build up in lungs, cause bloody

समिति द्वारा अनुमोदित

प्रभारी अधिकारी
स्वच्छता शाखा

DISTRICT KHARGONE SURVEY REPORT

State Level Environment

Assessment Authority, M.P.

(EPCO)

Paryavaran Parisar

E-5, Arera Colony, Bhopal (M.P.)

coughing and breathlessness. Mothers usually take their children to sites where they break smaller stones.

The patient's physical stamina dwindles over a period of time; he gets progressively weaker and eventually succumbs to death. The gravity of silicosis can be assessed from the fact that its patients have little hope of survival. They are left with no alternative other than to die a slow and painful death. The dust hazard known as pneumoconiosis in industrial workers has existed for centuries. Various physical properties and chemical components of dust produce different changes in the lungs. Silicosis is the main offender and is the most common of all pneumoconioses. Improvement in industrial hygiene, techniques such as wet drilling, efficient ventilation, personal protection, and in some countries the use of aluminum dust for prophylaxis have prevented silicosis to some extent. In India, small-scale industries/mines are largely devoid of these preventive measures. There is a need to conduct detailed studies regarding the condition of mine area environment and mine related diseases. **The National Human Rights Commission India (NHRC) published a detailed report**.in 2016 on the basis of studies they carried out, though it was mainly regarding dressed stone mining and cutting/ pencoil workers. But is directly or indirectly related to or the suggestive measures may prove to be highly effective in dealing with the remedial measures. The report is an eye opener. Its guidelines and measures may prove to be highly effective to control the mines related diseases and they should also be implemented and should also be part of mine planning (Cortesy: NHRC_Interventions_on_Silicosis_27122016.pdf). The Department of health & family welfare, Govt. of Madhya Pradesh initiated State Stratagic Plan for TB elimination in Madhya Pradesh.

| समिति द्वारा अनुमोदित

प्रभारी अधिकारी
जनित शाखा
जिला-खरगोन (म.प्र.)



DISTRICT KHARGONE SURVEY REPORT FOR OTHER MINES
State Level Environment Impact
Authority, M.P.
(EPCO)

Paryavaran Parisar
E-5, Arera Colony, Bhopal (M.P.)

SAFETY AND OCCUPATIONAL HEALTH Safety: Every proponent should envisaged to take up the following precautionary measures. • Strict observance of the provisions of Acts, Rules and Regulations in respect of safety both by management and the workers. • Proper planning and designing of work in order to reduce the risk of hazards. • Specific instructions and supervisions of working where danger due to fall of side. • Training of work persons and the officials. Occupational Health An organizational set up has been established by OMDC to comply the general health standards of the workers and the nearby villagers by undertaking Occupational health Surveillance on regular basis as a part and parcel of OHS and environmental management program in line with EIA/EMP. The project proponent should do health survey of mine workers and its surrounding villagers to know the health status of mine workers as well as surrounding villagers. As per district medical officer report, there is not a single case of tuberculosis & silicosis has been reported.

Table No.11

YEAR	NO. OF PATIENTS TUBERCULOSIS	NO. OF PATIENTS SILICOSIS
2016	Nil	Nil
2017	Nil	Nil
2018	Nil	Nil
2019	Nil	Nil
2020	Nil	Nil
2021	Nil	Nil
2022	Nil	Nil

समिति द्वारा अनुमोदित

प्रभारी अधिकारी
बनजि शाखा
जिला-खरगोन (म.प्र.)

State Level Environment Impact
Assessment Authority (EPCO)
Paryavaran Parivar
E-5, Area Colony, Bhopal (M.P.)

26. PLANTATION AND GREEN BELT DEVELOPMENT IN RESPECT OF LEASES ALREADY GRANTED IN THE DISTRICT;

Plantation within the sanctioned area is one of the essential conditions to grant EC & being done by the lease holder within the mines, which are currently operating as per the condition of environmental clearance. For every mine, compliance report along with photographs is also being submitted. Plantation is being done near the crusher machine and in the barrier zone, as well as in the nearby villages as proposed in mining plan. Usually, every major project is accompanied by proposals for plantation and development and protection of green belt areas. But proposals for small projects like QL do not emphasize much on these aspects. Thus, the proposal for plantation in the barrier zone of mine was made mandatory (Minor Mineral Rules 1996 and amended wide No.F-19-12013- Twelve-1, Dated 23rd March 2013). Every mining plan has to accompany proposal for plantation and is binding on the lease holders. The lease holders are bound to plant the trees and maintain them during the tenure of lease. The proper monitoring and stringent actions are required to enforce planting of sapient and their sustainability. The district mine officials do the regular assessment of mine and monitor the development of mine, production and other issues detailed/approved in mine plan proposal. The satellite-based monitoring system (SMS) may also prove effective in timely monitoring. Further, open spaces should be kept around the mining area clusters, where plantation should be done to protect the environment. Here local plant species should be grown. Thus, botanists and environmentalist can also be involved. The approval of SEIAA is mandatory for every mining plan proposal. The MPPCB's report is also required before the commencement and continuation of mining operations. The Green belt land refers to an area that is kept in reserve for an open space, most often around larger cities. The main purpose of the green belt policy is to protect the land around larger urban centers from urban sprawl, and maintain the designated area for forestry and agriculture as well as to provide habitat to wildlife.

समिति द्वारा अनुमोदित

प्रभारी अधिकारी
बनिय शाखा
जिला-धरबोद (अ.प्र.)

Plantation will be done within 7.5 m. barrier zone. Site for proposed plantation is chosen, so as to facilitate proper monitoring and after care of plants on regular basis. program of afforestation is decided keeping in view to improve environment. Plantation is proposed by considering that each plant will cover about 3 x 3 m. area and survival rate is considered about 80%. **Plants like Mango, Karanj, Subababool, Gulmohar, Neem, Amaltas, Bargad, Ashok, Sheesham, Harra-Baheda, Bel, Imli and some medicinal plants** and other varieties will be planted in consultation with forest department. Sapling will be planted in 30 cm. deep holes covered with soil and manure. Mali will take care of plants for better survival conditions. Details of proposed plantation are given below:

Table No. 12 Plantation Details Stone/Gitti

क्र.	पट्टेदार का नाम	खनिज का नाम	स्वीकृत खसरा	रकबा (हेक्टेयर)	ग्राम	तहसील	खदान क्षेत्र में लगाये गये पौधों की संख्या
1	ASHOK KUMAR AGRAWAL-SHRI MOHANLAL AGRAWAL-ZIRNIYA ROAD BHIKANGAON	गिट्टी	23	2	बंजारी	भीकनगँव	25
2	GULREJ MALIK-SHRI MUSTAQ MALIK-SANAVAD	गिट्टी	52	1.8	नंदगँव	सनावद	50
3	MAHESH CHOUHAN-SHRI LIMDIYA CHOUHAN-MAHENDRA CHOUHAN KHARGONE	गिट्टी	20/1	2.8	मनावर	खरगोन	25
4	MANOJ RATHORE-SHRI MANGALSINGH RATHORE-MOHAN RATHORE KHARGONE	गिट्टी	100/3	2	मनावर	खरगोन	10
5	BALAJI STONE CRUSHER-SHRI DIPESH VIJAYVARGIYA-	गिट्टी	148/1	1.6	मुरल्ला	बडवाह	90

BARWAH							
6	TANTULAL PAGARE-SHRI HARI PAGARE-MITAVAL ZIRNIYA	गिट्टी	83/1	1	गवला	झिरनिया	30
7	DHARMENDRA JAISWAL-SHRI ASHOK CHAND JAISWAL-GRAM AHIKHEDE	गिट्टी	113/1	2	पिपरखेडा	गोगावां	50
8	ANTIM PATIDAR- MOHAN LAL PATIDAR, KHARGO NE	गिट्टी	13/2/1	2	हसनगॉव	खरगोन	50
9	ARUN NAYAK-SHRI GYANSINGH NAYAK-LOUNDI	गिट्टी	120/1	1	कदवालिया	बडवाह	200
10	KAILASH-SHRI JAIRAM RATHOR- MOGARGAON TEH BHAGWANPURA	गिट्टी	109	2	मोंगरगॉव	भगवानपुरा	50
11	SHEKHAR PATWAL- SHRI GORDHAN PATWALA-SHUKH NIVAS INDORE	गिट्टी	83	4	झिगडी	बडवाह	200
12	MAYA RAGHUVANSHI- SHRI DEELIP RAGHUVANSHI- KHARGONE	गिट्टी	13/1	2	पिपरखेडा	गोगावां	10
13	BALAJI STONE CRUSHER-SHRI DIPESH VIJAYVARGIYA- BARWAH	गिट्टी	148/1	2	मुरल्ला	बडवाह	50
14	VAIBHAV KUMAR ARYA-SHRI BHUPENDRA ARYA- NUTANNAGAR, KHARGONE	गिट्टी	221	2	जुवानिया	गोगावां	15
15	SHRI VALLABH STONE CRUSHER- PIPALJHOPA	गिट्टी	127	2	पिपलझोपा	कसरावद	200
16	VISHVASHRVA JOSHI-SHRI SADASHIV JOSHI- BTI ROAD KHARGONE	गिट्टी	5	2	मोमीनपुरा	खरगोन	25

समिति द्वारा अनुमोदित

DISTRICT KHARGONE SURVEY REPORT FOR OPEN PIT MINERAL

प्रभारी अधिकारी

पर्यावरण स्तर पर्यावरण (EPCO)
पर्यावरण परिसर
E-8, Arera Colony, Bhopal (M.P.)

17	CHARANJEET SINGH BHATIA- SHRI KESHAR SINGH BHATIA- TILBHANDESHWAR MARG BARWAH	गिट्टी	248/1	2.023	मुरल्ला	बडवाह	100
18	PIYUSH S/O SURESH CHANDEL	गिट्टी	7	1.315	मोमीनपुरा	खरगोन	20
19	SUDHIR NIKHORIYA-SHRI JALAMSINGH NIKHORIYA-DANGI MOHALLA PAHADSINGHPURA KHARGONE	गिट्टी	30	2	ईब्राहिमपुरा	गोगावां	15
20	IQBAL SINGH-SHRI MELSINGH- ZIRNIYA	गिट्टी	25/2	1	पुतला	झिरनिया	0
21	GANPAT PATEL- SHRI DAULAT PATEL-SALIMPURA TEH KASRAVAD	गिट्टी	98/1	2	रूपखेडा	कसरावद	40
22	DHEERAJ YADAV- SHRI RAMESH CHANDRA YADAV- JAMIDAR MOHALLA KHARGONE	गिट्टी	30	2	ईब्राहिमपुरा	गोगावां	40
23	KAVALJEET SINGH CHHABRA-SHRI BALVEER SINGH CHHABRA- BARWAH	गिट्टी	123	0.809	कदवालिया	बडवाह	15
24	SANJAY PATWALA- SHRI GOVRDHAN PATWALA-INDORE	गिट्टी	83	2	झिगडी	बडवाह	150
25	DHARMENDRA S/O RAISINGH RATHORE	गिट्टी	28/2	2	गवला	खरगोन	25
26	LOKESH PATDAR- SHRI ASHARAM PATIDAR-GARAM NANDGOAN	गिट्टी	469	2	गंधावड	सेगाव	60
27	NAGRAJ STONE CRUSHER AND SUPPLIERS-BISTAN	गिट्टी	1	1.3	लोनारा	भगवानपुरा	80
28	CHANDRA SHEKHAR MAINA- SHRI MAINA- PAHADSINGH PURA KHARGONE	गिट्टी	25	2	आदमपुरा	खरगोन	50

समिति द्वारा अनुमोदित

DISTRICT KHARGONE SURVEY REPORT FOR OTHER MINOR MINERAL

प्रशासकीय अधिकारी
खनिज अन्वेषण

जिला-खरगोन (प्र.प्र.)

State Level Environment Imp

Assessment Authority, M.P.

(EPCO)

Paryavaran Parisar

Arera Colony, Bhopal

29	SATISH JAISWAL- SHRI NANDKISHOR JAISWAL- KHARGONE	गिट्टी	7	3.5	मोमीनपुरा	खरगोन	30
30	SACHIN SINGH SAGAR-SHRI JEEVAN SINGH SAGAR- BHIKANGOAN	गिट्टी	45/1	4	जामनिया	भीकनगॉव	40
31	BHUPENDRA SINGH TOMAR-SHRI CHHATAR SINGH TOMAR-GARAM, BEDIYA	गिट्टी	149/1,1 49/2, 147/1, 150, 151/1, 105	4	कालबरड	सनावद	500
32	ASHISH JAISWAL- SHRI HARISHANKAR JAISWAL- KHARGONE	गिट्टी	54/1	3	सस्याखेडी	भीकनगॉव	70
33	RAGHVENDRA SINGH-SHRI VIJAYENDRA SINGH-24 B SHRIJI, VATIKA PIPLIYAANA INDORE	गिट्टी	161/6	2	सगडियाव	सनावद	500
34	NILESH KUMAR DIVEKAR-KISHORE DIVEKAR M.G. ROAD BARWAH	गिट्टी	75/1	2.305	बरलाय	महेश्वर	25
35	RUBI-SHRI RAJENDRA-DIST. SEHORE	गिट्टी	148	2	जामनिया	भीकनगॉव	
36	MAHMOOD KHAN- SHRI NYAMAT KHAN-SAGDIYA	गिट्टी	348/1, 348/2	1.52	सगडियाव	सनावद	130
37	NITESH SOLANKI- SHRI TARA CHANDRA SOLANKI-3/78 AB ROAD,	गिट्टी	326	3	टेमला	खरगोन	30
38	RAJESH BADOLE- Nootannagar Colony Khargone	गिट्टी	273	1	ठीबगॉव	गोगावां	20
39	BENIRAM-SHRI PREMLAL PATEL- GRAM, KATORA TEH. SANAWAD	गिट्टी	125	2	बिजगोन	सनावद	100

समिति द्वारा अनुमोदित

प्रभारी अधिकारी
खनिज शाखा

DISTRICT KHARGONE SURVEY FOR MINOR MINERAL Assessment Authority, M.P.

(EPCO)

Paryavaran Parisar
E-5, Arera Colony, Bhopal (M.P.)

40	SHAIENDRA SINGH SOLANKI- SHRI YASHAVANTSINGH SOLANKI- SANAVAD	गिट्टी	156	2	खुडगोंव	सनावद	25
41	AJMUDDIN MEVATI-SHRI CHIRAGUDDIN MEVATI- BALSAMUD	गिट्टी	116	2	जालनपुर	कसरावद	40
42	SAMRADDHA MUCHHAL-SHRI GHISHILAL MUCHHAL- KHARGONE	गिट्टी	25	1.68	आदमपुरा	खरगोन	20
43	SHREE SYAM INTERPRISES PRO. KIRTI PATIDAR	गिट्टी	15/1	2	खारिया	महेश्वर	5
44	HARBHAJAN SINGH BHATIA-SHRI DARSHANSINGH BHATIA- PAHADSINGH PURA KHARGONE	गिट्टी	90	2	खेडीखानपुर I	गोगावां	70
45	OM PRAKASH BANSAL-SHRI JEEVANDAS BANSAL-PATEL ROAD SANAWAD	गिट्टी	54	1.71	नंदगोंव	सनावद	40
46	VINITA AGRAWAL- SHRI BABAN AGRAWAL- NARAYANDAS COLLONY, KHARGONE	गिट्टी	3/1	2	रणगोंव	खरगोन	50
47	KULDEEP MAHAJAN-SHRI MUKESH MAHAJAN- VILLAGE PIPRI TEH- THIKRI DISTRICT BARWANI	गिट्टी	279	2	बेगन्दी	कसरावद	50
48	SANJAY RAGHUVANSHI- SHRI DEVISINGH RAGHUVANSHI- KHARGONE	गिट्टी	90/246	1.6	खेडीखानपुर I	गोगावां	30
49	SATISH JAISWAL- SHRI NANDKISHOR JAISWAL- KHARGONE	गिट्टी	489	2	सुरपाला	खरगोन	50

50	SUNIL PATIDAR-SHRI REVARAM PATIDAR-GOLWAVI	गिट्टी	606	2	सेगाव	सेगाव	50
51	S S STONE CRUSHER-SHRI AJAY RAGHUVANSHI-PAHAD SINGH PURA, KHARGONE	गिट्टी	15	2	रणगोंव	खरगोन	50
52	LALEET-SHRI SHYAMILAL-BAGOD TEH. BARWAH	गिट्टी	21/1	2	कलवारिया	बडवाह	40
53	SUNDRAM SUPPLIERS-SHRI AMIT BHAVSAR-KHARGONE	गिट्टी	5	2.853	मोमीनपुरा	खरगोन	100
54	G.H.V. INDIA. P.V.T. PRO. VIJAPURA SAFIMOHAMMAD-SHRI HUSSEN BHAI MANGI BHAI VIJAPURA-BHIKANGAON	गिट्टी	258	2.6	चरीपुरा	भगवानपुरा	30
55	G.H.V. INDIA. P.V.T. PRO. VIJAPURA SAFIMOHAMMAD-SHRI HUSSEN BHAI MANGI BHAI VIJAPURA-BHIKANGAON	गिट्टी	16/1	4	अमनखेडी	भीकनगोंव	30
56	NAVEEN KUMAR AGRAWAL-SHRI MANOHAR LAL AGRAWAL-MANDLESHWER	गिट्टी	50/1/2	4	चिन्दडिया	महेश्वर	30
57	SUNITA AGRAWAL-SHRI PURSHOTTAM AGRAWAL-MANDLESHWER	गिट्टी	03-Jul	2	मलाक्षाखेडी	महेश्वर	30
58	SUNITA AGRAWAL-SHRI PURSHOTTAM AGRAWAL-MANDLESHWER	गिट्टी	50/1/2	2	मलाक्षाखेडी	महेश्वर	30
59	ASHOK KUMAR AGRAWAL-SHRI MOHANLAL AGRAWAL-ZIRNIYA ROAD BHIKANGAON	गिट्टी	23	3	बंजारी	भीकनगोंव	25

समिति द्वारा अनुमोदित

प्रभारी अधिकारी

DISTRICT KHARGONE SURVEY REPORT FOR OTHER MINOR MINERAL

जिला-खरगोन State Level Environment Assessment Authority, M.P.

(EPCO)

Paryavaran Parisar
E-5. Arera Colony, Bhopal (M.P.)

60	PRASSUN MUCHHAL-SHRI MANGILAL MUCHHAL- KHARGONE	गिट्टी	30	2	ईब्राहिमपुरा	गोगावां	30
61	SUSHIL JOSHI-SHRI RAJNIKANT JOSHI- BHOKLE COLONY KHARGONE	गिट्टी	297	1	बलवाडी	गोगावां	10
62	ANAND JAISWAL- SHRI RAMNARAYAN JAISWAL-117 MG ROAD BHIKANGAON	गिट्टी	6/1	1	बंजारी	भीकनगॉव	25
63	SHREE SANWARIYA INFRASTRUETURE- SMT SANGEETA SAWNER- KHANDWA	गिट्टी	108, 123	1.88	लाईखेडी	झिरनिया	200
64	ARVIND JAISWAL- SHRI PREMLAL JAISWAL-VILLAGE DONDVA TEHSIL BHIKANGAON	गिट्टी	203/6, 203/8	2	दौडवा	भीकनगॉव	15
65	GAJENDRA SONIYAR-SHRI DHANNALAL SONIYAR-TALAB CHOUK, KHARGONE	गिट्टी	21/12	2	डोल	गोगावां	12
66	KARTAR CHOUHAN-SHRI PUNIYA CHOUHAN- GRAM SATWADA TEH. BHIKANGOAN	गिट्टी	119/1/ 1	1	रोस्या	भीकनगॉव	15
67	MEHMOOD RIYAJ- SHRI MANJUR HUSAIN MALIK- B.T.I. ROAD, KHARGONE	गिट्टी	452/2, 452/4	2	डालका	खरगोन	30
68	ANAND JAISWAL- SHRI RAMNARAYAN JAISWAL-117 MG ROAD BHIKANGAON	गिट्टी	66/1/2	1.8	श्यामलपुरा	भीकनगॉव	25
69	J.P GRUP & CON. (ANADN SEN)	गिट्टी	163	1.8	महूमॉडली	गोगावा	0
70	PRATHVIRAJ S/O ARJUN SINGH	गिट्टी	84	2	साधुपुरा	कसरावद	0

समिति द्वारा अनुमोदित

DISTRICT KHARGONE SURVEY REPORT FOR THE YEAR 2017-18 FOR MINERAL

राज्य-स्तरीय पर्यावरण प्रदूषण नियंत्रण आयोग (EPCO)

State Level Environment Impact Assessment Authority, M.P. (EPCO)

Paryavaran Parisar
E.5. Arera Colony, Bhopal (M.P.)

SOLANKI							
71	CHANDA STONE CRUSHER	गिट्टी	21/2	1.7	रोडिया	भीकनगाँव	50
72	KAIRA CON. (AASHUTO AGRAWAL)	गिट्टी	812/1, 812/2, 812/3	4	अकावलीया	खरगोन	50
73	JAGDISH KUSHWAH - Add. Mandleshwer	गिट्टी	197/1	2	सॉगवी	महेश्वर	30
74	SANTOSH S/O SYAMLAL CHANDEL add. BHIKANGAV	गिट्टी	420/1	1	मछलगॉव	भीकनगाँव	30
75	NISHANT S/O ARVIND JAISHWAL - BHIKANGAV	गिट्टी	152/1	2	मोहद	भीकनगाँव	0
76	ASHOK MAINA-SHRI DEVI SINGH MAINA-DEVISINGH MAINA MOTIPURA KHARGONE	गिट्टी	47/, 48	3	आदमपुरा	खरगोन	50
77	SADIK KHAN-SHRI SHABBIR KHAN-GRAM SALA TEH, KASRAWAD	मुरुम	242	2	बलखड	कसरावद	50
78	RAJESH SHARMA-SHRI DINDAYAL SHARMA-GAYATRI NAGAR, KHARGONE	मुरुम	76/1	2	राजपुरा	गोगावा	30
79	MEHMOOD RIYAJ-SHRI MANJUR HUSAIN MALIK-B.T.I. ROAD, KHARGONE	मुरुम	86/1/2	1.445	मनावर	खरगोन	30
80	BHURE SINGH-SHRI DOULAT SINGH-KHALKHURD TEH. KASRAWAD	मुरुम	253	2	बलखड	कसरावद	30
81	WASIM KHAN-SHRI AJMUDDIN MEVAETI-BALSAMUD	मुरुम	50	2	बलखड	कसरावद	30
82	NAVEEN KUMAR AGRAWAL-SHRI MANOHAR LAL AGRAWAL-MANDLESHWER	मुरुम	50/1/2	2	चिन्दडिया	महेश्वर	30

समिति द्वारा अनुमोदित

प्रभारी अधिकारी

अनिज शाखा

जिला-खरगोन (म.प्र.)

DISTRICT KHARGONE SURVEY REPORT FOR OTHER MINOR MINERALS Environment Imp

Assessment Authority, M.P.

(EPCO)

Paryavaran Parisar

E-5, Arera Colony, Bhopal (M.P.)

83	RAJESH JAISWAL- SHRI MANGILAL JAISWAL-GRAM, BHOINDA, TEH.KAS RAWAD	मुरुम	10/1, 10/2	2	ओरंगपुरा	कसरावद	30
84	SADIK KHAN-SHRI SHABBIR KHAN- GRAM SALA TEH, KASRAWAD	मुरुम	234	2	बलखड	कसरावद	15
85	TRILOK S/O MADHUSUDAN PATEL	मुरुम	253	2	बलखड	कसरावद	30
86	SHRI TIRUPATI MINES-KHARGONE	मुरुम	297	2	बलवाडी	खरगोन	10
87	SUKHADEV DAVAR - JHIRNIYA	गिट्टी	21/1	2	दामखेडा	झिरनिया	0
88	VIMAL S/O JAGDISH DANGI - BALWADA	गिट्टी	45	1	कदवालिया	बडवाह	250
89	SUMIT KANUNGO - BARWAHA	गिट्टी	463/1	1.9	गंधावड	खरगोन	
90	Vedika corporation Pro. Amit Jain- khargone	गिट्टी	113/1	3.392	पिपरखेडा	खरगोन	0
91	NILESH RAGHUVANSHI	गिट्टी	7	2	मोमीनपुरा	खरगोन	0
92	PARMEET BHATIYA BARWAHA	मुरुम	126	2	कदवालिया	बडवाह	0
93	ARUN NAYAK-SHRI GYANSINGH NAYAK-LOUNDI	गिट्टी	120/1	2	लौंदीबी	बडवाह	100

समिति द्वारा अनुमोदित

प्रभारी अधिकारी
जनित शाखा
जिला-खरगोन (म.प्र.)



समिति द्वारा अनुमोदित

DISTRICT KHARGONE SURVEY REPORT FOR OTHER MINOR MINERAL

प्रभारी अधिकारी
जनकपुर

जिला-खरगोन

State Level Environmental
Assessment Authority, M.P.
(EPCO)
Paryavaran Parishad
Arera Colony, Bhopal (M.P.)



समिति द्वारा अनुमोदित

DISTRICT KHARGONE SURVEY REPORT FOR MINERAL

प्रभारी अधिकारी


जिला-खरगोन (म.प्र.)

(Signature)

Assessment
Paryavaran Parisa
Areta Colony, Bhopal (M.P.)



समिति द्वारा अनुमोदित


 प्रभारी अधिकारी
 खनिज शाखा
 जिला-खरबोल (म.प्र.)


 State Level Environmental Impact
 Assessment Authority (EPCO)
 Paryavaran, Arera Colony, Bhopal (M.P.)





[समिति द्वारा अनुमोदित

प्रभारी अधिकारी
जनित शाखा
जिला-खरखी

State Level Environment Impact
Assessment Authority (EPCO)
Prayagraj
Uttar Pradesh




समिति द्वारा अनुमोदित

प्रभारी अधिकारी
 सविन शर्मा
 जिला-खारखोन् (M.P.)

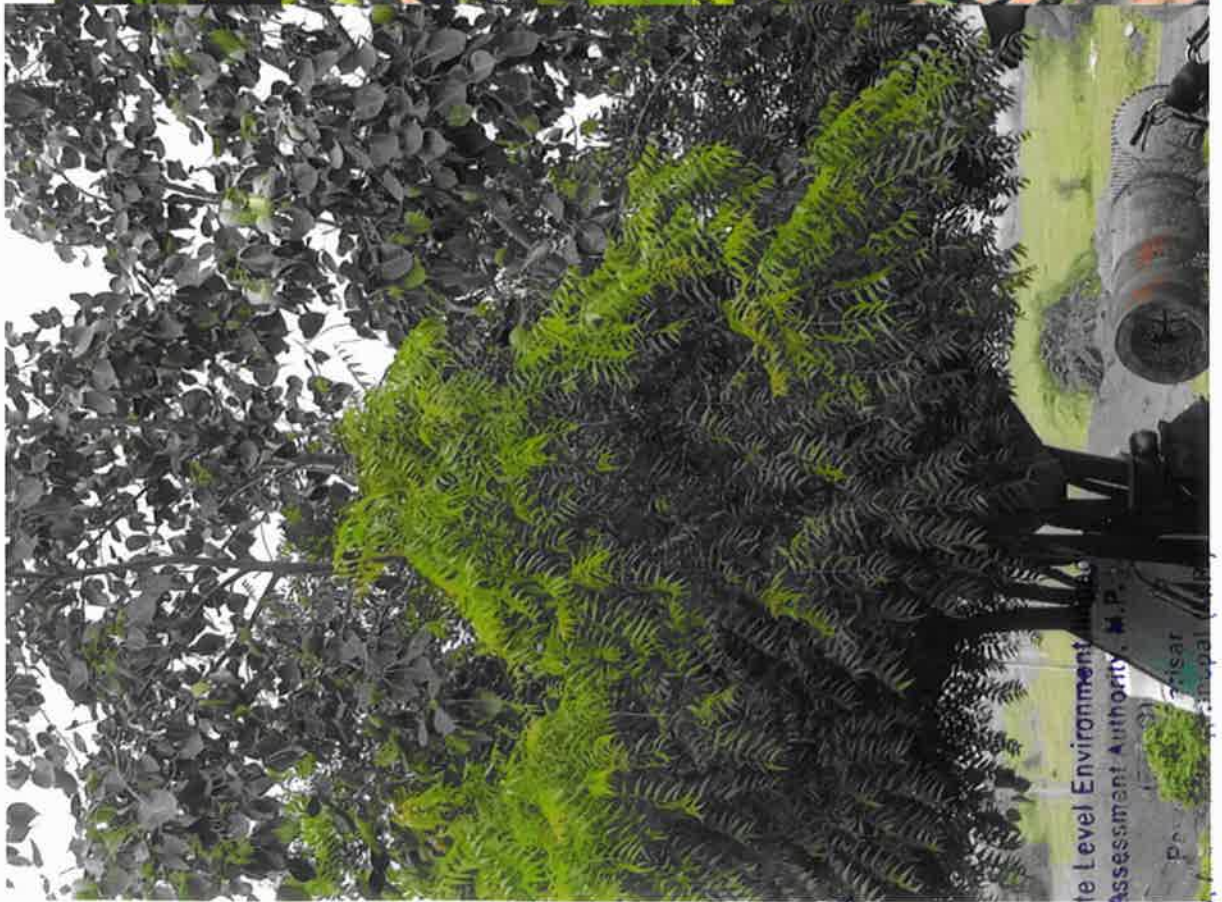
State Level Environment Impact
 Assessment Authority, M.P.
 District Khargone Municipal (M.P.)



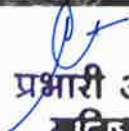
समिति द्वारा अनुमोदित


 प्रभारी अधिकारी
 खनिल



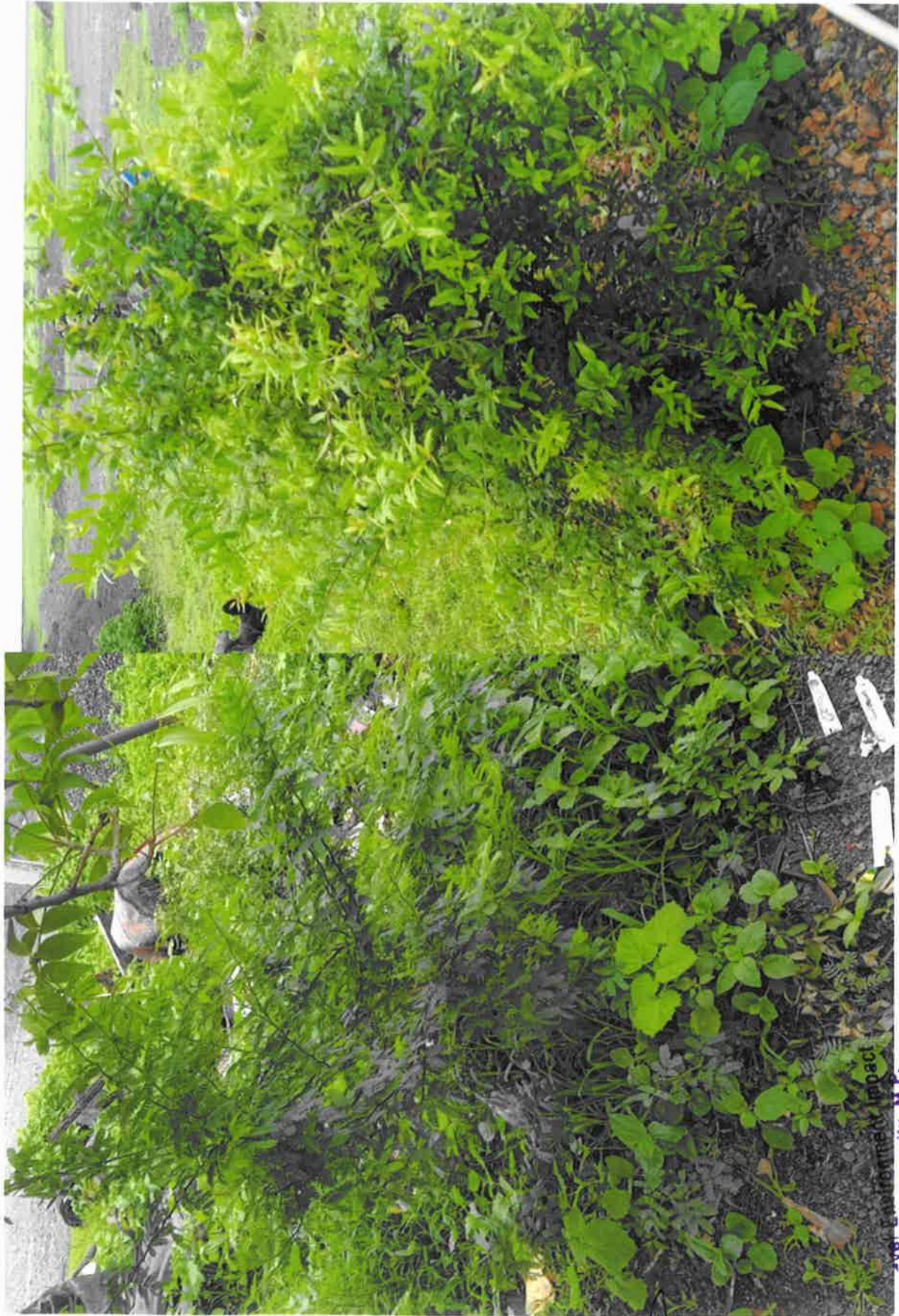


समिति द्वारा अनुमोदित


 प्रभारी अधिकारी
 बनिज झांघा
 जिला-खरबोन (म.प्र.)



State Level Environment
 Assessment Authority, M.P.
 प्र. पर्यावरण मूल्यांकन प्राधिकरण, म.प्र.



समिति द्वारा अनुमोदित

प्रक्षारी अधिकारी
बनजि शर्मा
जिला खारखोद (म.प्र.)

(Signature)

Environmental Impact
Assessment Authority, M.P.
(EPCO)

पर्यावरण: पारिसर
E-5, Arega Colony, Bhopal (M.P.)



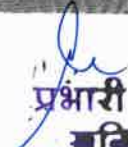
समिति द्वारा अनुमोदित

प्रशारी अधिकारी
बनिकारना
जिला खरबो


 State Level Environment Impact
 Assessment Authority, M.P.
 (EPCO)
 Parshwaraj Parisar
 E-5, Arega Colony, Bhopal (M.P.)



समिति द्वारा अनुमोदित


 प्रभारी अधिकारी
 जल विभाग
 जिला कार्यालय (राजपुर)

Environmental Leveling
 Assessment Authority, M.P.
 (E.P.C.O)
 परियोजना परिसर
 (M.P.)
 E-5, Alera Colony, Bhopal



समिति द्वारा अनुमोदित

प्रभारी अधिकारी
 खनिज शाखा
 विना-खण्ड (म.प्र.)

State Level Environment Impact
 Assessment Authority, M.P.
 (EPCO)

पर्यावरण परिसर
 E-5, Aterā Colony, Bhopal (M.P.)



समिति द्वारा अनुमोदित

प्रभारी अधिकारी
खनिज

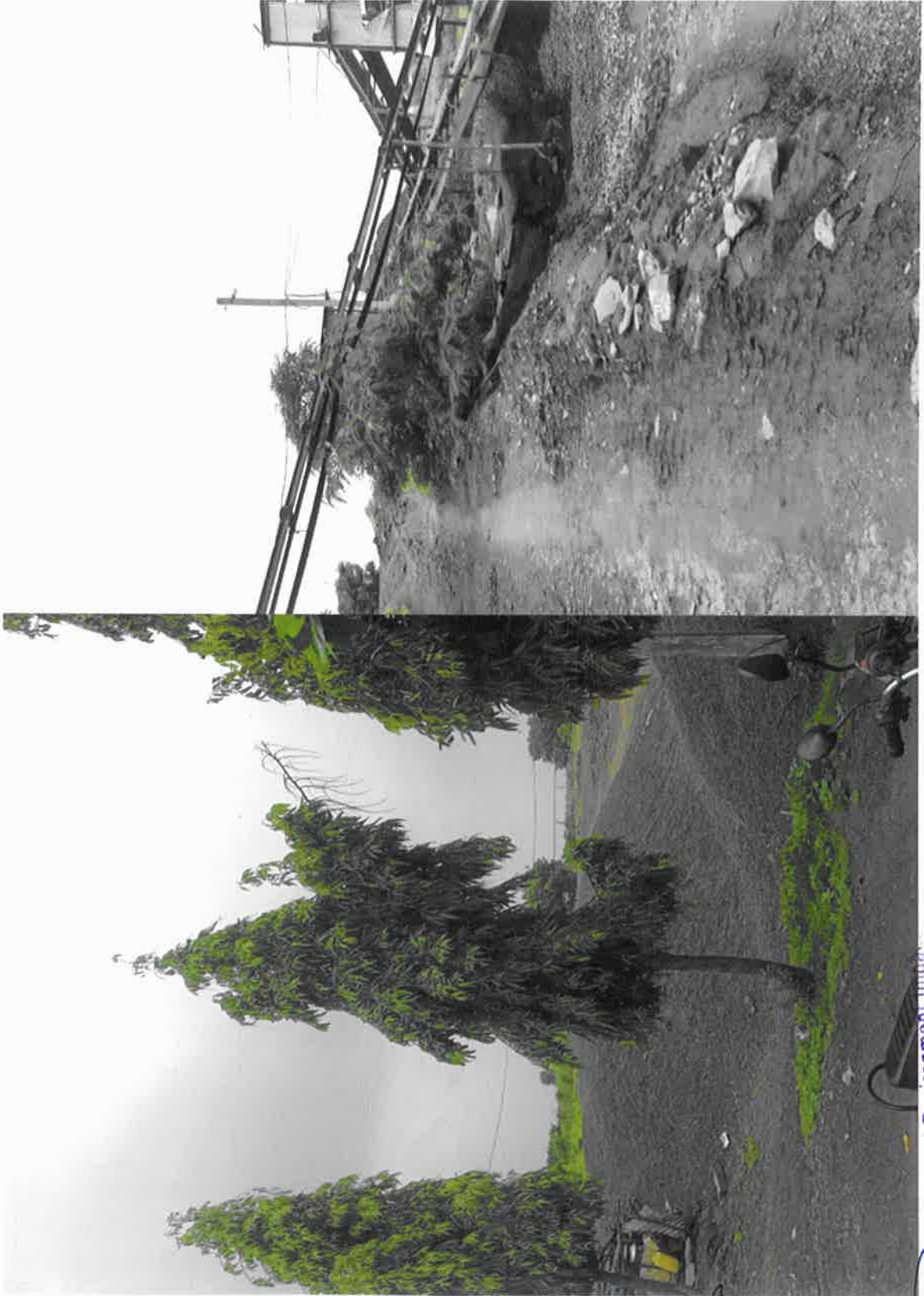
State Level Environment Impact
Assessment Authority, M.P.
(EPCO)
Parvatan Parisar
Bhopal (M.P.)



समिति द्वारा अनुमोदित

प्रभारी अधिकारी
खनिज

State Level Environment Impact
Assessment Authority, M.P.
(EPCO)
Paryavaran Parisar
E-9, Anasa Colony, Bhopal (M.P.)



DISTRICT KHARGONE SURVEY REPORT FOR OTHER MINOR MINERAL

समिति द्वारा अनुमोदित

प्रभारी अधिकारी
 सविज
 खिन्ना-खरको

State Level Environment Impact
 Assessment Authority, M.P.
 (EPCO)

(Signature)

पर्यावरण विभाग
 E-5, Arera Colony, Bhopal (M.P.)



NERAL

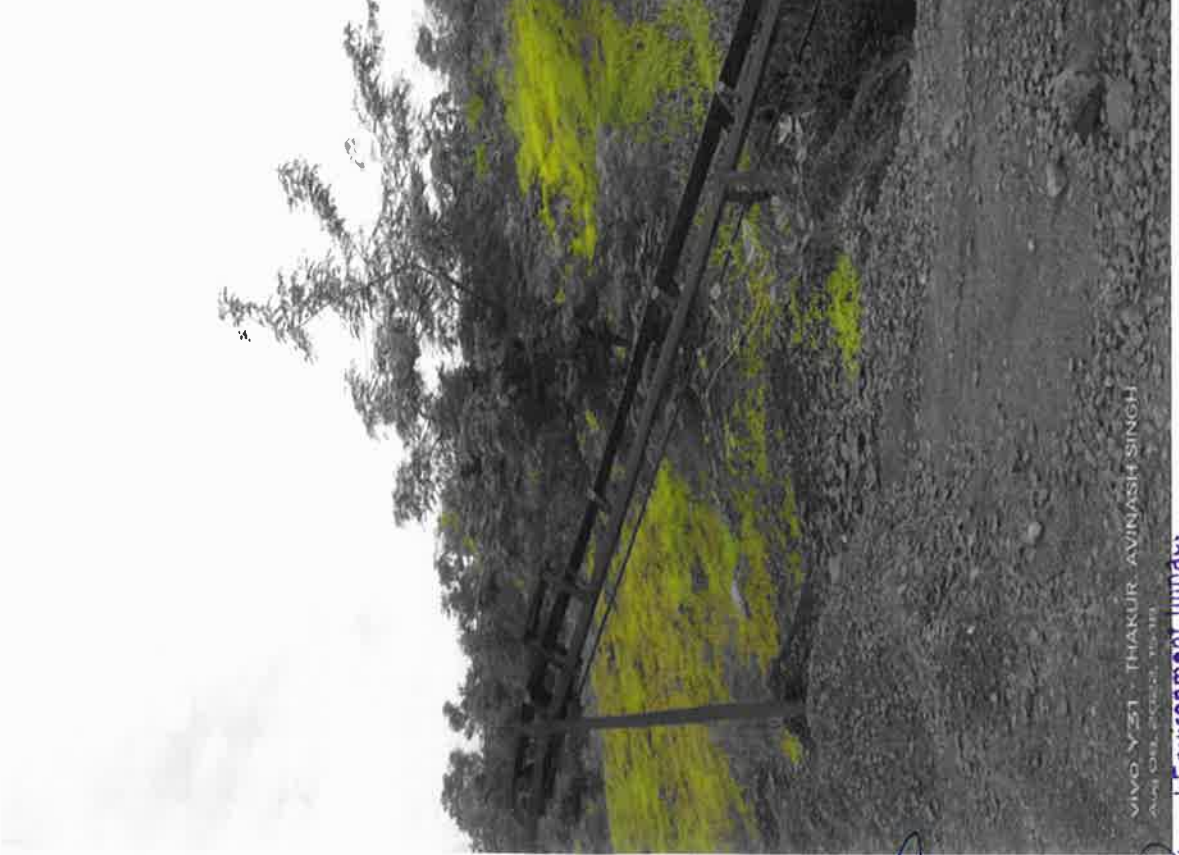
State Level Environment Impact
 Assessment Authority, Madhya Pradesh
 (EPCO)
 Parvavaran Park, Bhopal (M.P.)
 E-5, Atrera Colony, Bhopal (M.P.)

समिति द्वारा अनुमोदित

प्रभारी अधिकारी

महेश्वर शर्मा

दिल्ली-खरवीन (२०११)



VIVO Y-31 THAKUR AVINASH SINGH
 A-101, P.O. 470001, INDIA

State Level Environment Impact
 Assessment Authority, M.P.
 (EPCO)

Paryavaran Purisat
 E-8, Atrera Colony, Bhopal (M.P.)

समिति द्वारा अनुमोदित

प्रभारी अधिकारी
 खनिज

खनिज-परकोठ

9- details of the mining leases in the District as per the following format: -

Sl. No.	Name of the Miner	Name of the Lessee	Address & Contact No. of Lessee	Mining lease Grant Order No. & date	Area of Mining lease (ha)	Period of Mining lease (Initial)		Period of Mining lease (1st/2nd...renewal)		Date of commencement of Mining Operation	Status (Working/Non-Working/Temp. Working for dispatch etc.)	Captive/ Non-Captive	Obtained Environmental Clearance (Yes/No), If Yes Letter No with date of grant of EC.	Location of the Mining lease (Latitude & Longitude)	Method of Mining (Opencast/Underground)
						From	To	From	To						
1	2	3	4	5	6	7	8	9	10	11	12	13	14	15	16
1.	gitti	ASHOK KUMAR AGRAWAL-SHRI MOHANLAL AGRAWAL-ZIRNIYA ROAD BHIKANGAON	9425981225 ZIRNIYA ROAD BHIKANGAON-	777 26-12-2015	2.000	14-01-2006	13-01-2016	14/01/2016	13/01/2026	01-01-2018	Working	Non-Captive	Yes 57 30-05-2016	N21°53'17.22" E 75°57'41.07" N21053'18.39" E 75057'46.62" N21053'13.43" E 75057'47.61" N21053'12.31" E 75057'41.78" N	Opencast
2.	gitti	GULREJ MALIK-SHRI MUSTAQ MALIK-SANAVAD	9826296201-Sanawad	4190 08-03-2019	1.800	27-06-2008	26-06-2018	27/06/2018	26/06/2028	29-09-2019	Working	Non-Captive	Yes/ 124 24/12/2016	22°11'13.62" N 76°02'06.71" E 22°11'14.86" N 76°02'09.22" E 22°11'14.46" N 76°02'13.35" E 22°11'12.01" N 76°02'13.41" E 22°11'10.72" N 76°02'12.13" E 22°11'10.72" N 76°02'07.40" E	Opencast
3.	gitti	MAHESH CHOUHAN-SHRI LIMDIYA CHOUHAN-MAHENDRA CHOUHAN KHARGONE	9826670177-Khargone	2759 25-11-2017	2.800	03-07-2008	02-07-2018	3/7/2018	2/7/2028	20-06-2019	Working	Non-Captive	Yes/ 236 20/12/2017	N 21°48'19.93" E 75°32'32.26" N 21°48'21.79" E 75°32'35.20" N 21°48'17.90" E 75°32'35.88" N 21°48'17.43" E 75°32'34.76" N 21°48'18.03" E 75°32'32.12" N 21°48'18.69" E 75°32'32.91" N	Opencast
4.	gitti	MANOJ RATHORE-SHRI MANGALSINGH RATHORE-MOHAN RATHORE KHARGONE	9399825646-Khargone	911 28-09-2018	2.000	28-09-2008	27-09-2018	28/09/2018	27/09/2028	01-05-2019	Working	Non-Captive	Yes/ 194 3/05/2017	21°48'40.39"N 75°32'34.34"E 21°48'43.46"N 75°32'42.14"E 21°48'41.00"N 75°32'42.61"E 21°48'39.28"N 75°32'34.56"E	Opencast
5.	gitti	BALAJI STONE CRUSHER-SHRI DIPESH VIJAYVARGIYA-BARWAH	9826622896 - BARWAH	1802 07-03-2019	1.600	27-02-2009	26-02-2019	27/02/2019	26/02/2029	13-07-2019	Working	Non-Captive	Yes/ 7370 06/11/2015	22°12'30.79" N 75°59'49.82" E 22°12'33.79" N 75°59'48.32" E 22°12'34.20" N	Opencast

समिति द्वारा अनुमोदित

प्रभारी अधिकारी
मन्त्रालय
विद्या-पट्टी (मन्त्रालय)

State Level Environment Impact
Assessment Authority, M.P.
(EPCO)
Bhopal (M.P.)

														75°59'49.84" E 22°12'32.74" N 75°59'50.60" E 22°12'34.75" N 75°59'58.50" E	
6.	gitti	TANTULAL PAGARE-SHRI HARI PAGARE- MITAVAL ZIRNIYA	9424564277- ZIRNIYA	340 06-06-2019	1.000	22-05- 2009	21-05- 2019	22/05/2019-	21/05/2029		Working	Non- Captive	Yes 69-70 30-05-2016	21° 42' 28.870" N 76° 6' 40.903" E 21° 42' 30.327" N 76° 6' 41.897" E 21° 42' 29.808" N 76° 6' 44.264" E 21° 42' 28.899" N 76° 6' 45.186" E 21° 42' 27.714" N 76° 6' 47.092" E	Opencast
7.	gitti	DHARMENDRA JAISWAL-SHRI ASHOK CHAND JAISWAL-GRAM AHIRKHEDA	8959954229 - AHIRKHED A	1347 19-12-2018	2.000	22-06- 2009	21-06- 2019	22/06/2019	21/06/2029	19-08-2020	Working	Non- Captive	Yes/ 172 30/01/017	21°45'04.52"N 75°38'24.31"E 21°45'04.18"N 75°38'33.06"E 21°45'01.56"N 75°38'32.94"E 21°45'01.84"N 75°38'24.02"E	Opencast
8.	gitti	ANTIM PATIDAR- MOHAN LAL PATIDAR,KHAR GONE	9926074516 Sukhapuri Khargone	1197 25-1-2020	2.000	04-11- 009	03-11- 2019	4/11/2019	3/11/2029	30-01-2021	Working	Non- Captive	Yes 144-45 24-12-2016	N21°55'9.37" E75°33'40.16" N21°55'9.62" E75°33'43.79" N21°55'13.43" E75°33'43.28" N21°55'13.20" E75°33'40.00	Opencast
9.	gitti	ARUN NAYAK- SHRI GYANSINGH NAYAK-LOUNDI	9753152081- NAYAK- LOUNDI	2131 6-9-2021	1.000	10-09- 2011	09-09- 2021	10/9/2021	9/9/2031	14-02-2019	Working	Non- Captive	Yes/ 116 10/08/2016	22°20'13.91"N 76°01'41.75"E 22°20'14.06"N 76°01'43.35"E 22°20'08.34"N 76°01'43.34"E 22°20'08.34"N 76°01'41.74"E	Opencast
10.	gitti	KAILASH-SHRI JAIRAM RATHOR- MOGARGAON TEH BHAGWANPUR A	9754621113 MOGARGA ON	1202 25-03-2021	2.000	22/12/20 10	21/12/2020	22/12/2020	21/12/2030	28-08-2019	Working	Non- Captive	Yes/ 68 18/06/2018	21°42'08.289" N 75°49'45.253" E 21°42'05.429" N 75°49'45.35" E 21°42'05.572" N 75°49'48.194" E 21°42'06.253" N 75°49'48.268" E 21°42'06.457" N 75°49'50.365" E 21°42'05.086" N 75°49'52.77" E 21°42'08.341" N 75°49'52.606" E	Opencast
11.	gitti	SHEKHAR PATWAL-SHRI GORDHAN PATWALA- SHUKH NIVAS INDORE	9425059830- SHUKH NIVAS INDORE	1296 24-03-2021	4.000	26-04- 2011	25-04- 2021	26/04/2021	25/04/2031	15-05-2018	Working	Non- Captive	Yes/ 17 30/05/2016	N 22022'24.8"E 75059'41.26" N 22022'25.80"E 75059'49.69" N 22022'27.29"E	Opencast

समिति द्वारा अनुमोदित

प्रभारी अधिकारी
स्वच्छता शाखा
मिना-खरबोद (म.प्र.)

State Level Environment Impact
Assessment Authority, M.P.
(EPCO)

Manvendra Patidar
E-5, Arera Colony, Bhopal (M.P.)

														75059'48.74" N 22022'30.42"E 75059'39.66"	
12	gitti	MAYA RAGHUVANSHI- SHRI DEELIP RAGHUVANSHI- KHARGONE	9826610506- KHARGON E	1882 03-08-2021	2.000	06/05/20 11	05/05/2021	06/05/2021	5/5/2031	20-08-2018	Working	Non- Captive	Yes/67 30/05/2016	21°45'07.70"N 75°38'07.02" E 21°45'07.70"N 75°38'13.89" E 21°45'04.47"N 75°38'13.89" E 21°45'04.37"N 75°38'07.02" E	Opencast
13	gitti	BALAJI STONE CRUSHER-SHRI DIPESH VIJAYVARGIYA- BARWAH	9826622896 -BARWAH	1910 27-10-2017	2.000	24/07/201 7-	23/07/2027	-	-	15-07-2019	Working	Non- Captive	Yes 230-31 20-12-2017	22°12'30.67"N 75°59'51.63" E 22°12'32.65"N 75°59'57.05" E 22°12'31.14"N 75°59'57.65" E 22°12'29.23"N 75°59'52.25" E	Opencast
14	gitti	VAIBHAV KUMAR ARYA- SHRI BHUPENDRA ARYA- NUTANNAGAR, KHARGONE	9926899099- KHARGON E	231 19-03-2012	2.000	7/2/2014	6/2/2024	-	-	20-05-2018	Working	Non- Captive	Yes/43 30/05/2016	21°49'29.692 " E 75°42'52.852" 21°49'25.004 " E 75°42'51.462" 21°49'25.318 " E 75°42'45.514" 21°49'27.779 " E 75°42'44.818" 21°49'27.786 " E 75°42'49.806" 21°49'29.92 " E 75°42'50.121"	Opencast
15	gitti	SHRI VALLABH STONE CRUSHER- PIPALJHOPA	6261920811- PIPALJHOP A	833 31-01-2014	2.000	31/01/201 4	30/01/2024	-	-	15-12-2018	Working	Non- Captive	Yes/207 18/01/2017	22°04'47.07"N 75°26'42.85" E 22°04'47.90"N 75°26'47.71" E 22°04'44.65"N 75°26'49.18" E 22°04'43.88"N 75°26'44.20" E	Opencast
16	gitti	VISHVASHRVA JOSHI-SHRI SADASHIV JOSHI-BTI ROAD KHARGONE	9826680802- Khargone	1334 02-02-2014	2.000	17-01- 2004	16-01- 2014	17/01/2014	16/01/2024	20-09-2017	Non-Working	Non- Captive	Yes/4428 05/01/2015	21°48'18.06"N 75°35'04.69" E 21°48'19.94" N 75°35'09.34" E 21°48'24.95" N 75°35'09.34" E 21°48'22.59" N 75°35'02.91" E	Opencast
17	gitti	CHARANJEET SINGH BHATIA- SHRI KESHAR SINGH BHATIA- TILBHANDESH WAR MARG BARWAH	9165223216- BARWAH	749 24-07-2014	2.023	11-08- 2004	10-08- 2014	11/8/2014	10/8/2024	30-01-2018	Working	Non- Captive	Yes/3392 26/03/2015	22°12'36.06"N 75°59'49.32"E 22°12'38.02"N 75°59'55.69"E 22°12'34.91"N 75°59'57.54"E 22°12'33.18"N 75°59'51.06"E	Opencast

समिति द्वारा अनुमोदित

प्रमुख अधिकारी
समिति शाखा
विस्थापन (म.प्र.)

State Level Environment Impact
Assessment Authority, M.P.
(EPCO)
Paryavaran Parishad
E-5, Arera Colony, Bhopal (M.P.)

18	gitti	PIYUSH S/O SURESH CHANDEL	7049005592- Kharg one	3351 18-08-2014	1.315	18-08- 2004	17-08- 2014	18/08/2014	17/08/2024	25-02-2021	Working	Non- Captive	Yes/5633 16/09/2015	N21°48'34.22" E75°34'58.45" N21°48'48.85" E75°35'04.42" N21°48'49.08" E75°35'02.44" N21°48'35.29" E75°34'56.42"	Opencast
19	gitti	SUDHIR NIKHORIYA- SHRI JALAMSINGH NIKHORIYA- DANGI MOHALLA PAHADSINGHPU RA KHARGONE	9340621036- KHARGON E	1000-A 10-11-2014	2.000	18/11/201 4	17/11/2024	-	-	01-07-2021	Working	Non- Captive	Yes/962 24/05/2021	A21°54'43.69" E 75°42'08.54" A21054'45.31" E 75032'46.03" A21054'48.98" E 75042'12.94" A21054'47.08" E 75042'07.67"	Opencast
20	gitti	IQBAL SINGH- SHRI MELSINGH- ZIRNIYA	ZIRNIYA 6263065054	1024 18-11-2014	1.000	18-11- 2004	17-11- 2014	18/11/2014	17/11/2024	09-04-2018	Non-Working	Non- Captive	Yes 6099 07-10-2015	21° 38' 23.361" N 76° 0' 39.939" E 21° 38' 23.014" N 76° 0' 43.413" E 21° 38' 19.910" N 76° 0' 42.792" E 21° 38' 20.056" N 76° 0' 39.278" E	Opencast
21	gitti	GANPAT PATEL- SHRI DAULAT PATEL- SALIMPURA TEH KASRAVAD	SALIMPUR A TEH KASRAVA D 9009091195	1058 24-11-2014	2.000	19-04- 2005	18-04- 2015	19/04/2015	18/04/2025	23-05-2019	Non-Working	Non- Captive	Yes 41-42 30-05-2016	N 22°04'19.93" E 75°30'46.57" N 22°04'19.80" E 75°30'50.62" N 22°04'16.02" E 75°30'50.46" N 22°04'16.33" E 75°30'46.48"	Opencast
22	gitti	DHEERAJ YADAV-SHRI RAMESH CHANDRA YADAV- JAMIDAR MOHALLA KHARGONE	9669835939- Khargone	1458 16-03-2015	2.000	25/04/201 5	24/04/2025	-	-	17-01-2020	Working	Non- Captive	Yes/5984 20/01/2022	N21°54'42.43" E 75°42'15.19" N 21054'43.22" E 75032'21.55" N 21054'40.63" E 75042'20.92" N 21054'40.25" E 75042'14.70"	Opencast
23	gitti	KAVAJEET SINGH CHHABRA-SHRI BALVEER SINGH CHHABRA- BARWAH	9826511025- BARWAH	1559 27-03-2015	0.809	19-11- 2004	18-11- 2014	19/11/2014	18/11/2024	10-01-2019	Working	Non- Captive	Yes/4425 05/08/2015	N 22°18'13.06"E 76°01'09.44" N 22018'15.38"E 76001'16.73" N 22018'17.53"E 76001'17.07" N 22018'15.88"E 76001'09.26"	Opencast
24	gitti	SANJAY PATWALA-SHRI GOVRDHAN PATWALA- INDORE	9425059830- SHUKH NIVAS INDORE	1563 27-03-2015	2.000	06/12/201 6-	5/12/2026	-	-	17-02-2019	Working	Non- Captive	Yes/168 30/01/2017	22° 22' 15.824" N 75° 59' 59.206" E 22° 22' 12.179" N 76° 0' 5.050" E 22° 22' 10.853" N 76° 0' 3.554" E	Opencast

समिति द्वारा अनुमोदित

प्रभारी अधिकारी
जनित शाखा
जिला-खरबोन (म.प्र.)



State Level Environment Impact
Assessment Authority, M.P.
(EPCO)
Paryavaran Parisar
E-5, Arera Colony, Bhopal (M.P.)

													22° 22' 14.214" N 75° 59' 58.136" E		
25	gitti	DHARMENDRA S/O RAISINGH RATHORE	9754104940- Khargone	1578 30-03-2015	2.000	21/05/201 5-	20/05/2025	-	-	01-08-2021	Working	Non- Captive	Yes/487 20/02/2020	N 21°50'07" E 75°39'49" E N 21°50'12" E 75°39'46" E N 21°50'14" E 75°39'44" E	Opencast
26	gitti	LOKESH PATDAR-SHRI ASHARAM PATIDAR- GARAM NANDGOAN	9753333115- NANDGOA N	10242 23-06-2015	2.000	05/10/201 5-	4/10/2025	-	-	05-10-2019	Working	Non- Captive	Yes/71 30/05/2016	21°54'08.16" 75°27'27.12" 21°54'08.38" 75°27'56.79" 21°54'01.59" 75°27'50.76" 22°54'02.11" 75°27'56.71"	Opencast
27	gitti	NAGRAJ STONE CRUSHER AND SUPPLIERS- BISTAN	9111036352- -BISTAN	466 02-07-2015	1.300	19-12- 2005	18-12- 2015	19/12/2015	18/12/2025	28-11-2018	Working	Non- Captive	Yes/128 24/12/2016	A21°41'2.58" E 75°40'24.31" E A21°41'2.97" E 75°40'28.90" E A21°41'5.96" E 75°40'28.60" E A21°41'5.42" E 75°40'23.72" E	Opencast
28	gitti	CHANDRA SHEKHAR MAINA-SHRI MAINA- PAHADSINGH PURA KHARGONE	9926044017- KHARGON E	30 08-07-2015	2.000	08/10/201 5-	7/10/2025	-	-	30-12-2017	Working	Non- Captive	Yes/19 30/05/2016	A21°48'08.02" E 75°34'21.67" E A21°48'09.84" E 75°34'24.65" E A21°48'05.61" E 75°34'26.78" E A21°48'03.95" E 75°34'23.66" E	Opencast
29	gitti	SATISH JAISWAL-SHRI NANDKISHOR JAISWAL- KHARGONE	9826598310- KHARGON E	475 13-10-2017	3.500	02/11/201 5-	1/11/2025	-	-	01-08-2018	Working	Non- Captive	Yes/63 30/05/2016	E21°51'11.48" N 75°31'47.78" E E21°51'07.96" N 75°31'55.84" E E21°51'04.70" N 75°31'47.88" E	Opencast
30	gitti	SACHIN SINGH SAGAR-SHRI JEEVAN SINGH SAGAR- BHIKANGOAN	Bhikangaon 8982489450	605 03-11-2015	4.000	5/1/2016	4/1/2026	-	-	25-04-2019	Non-Working	Non- Captive	Yes 49-50 30-05-2016	E21°57'30.10" N 75°48'56.80" E E21°57'29.60" N 75°49'3.30" E E21°57'28.01" N 75°49'3.53" E E21°57'25.57" N 75°48'58.84" E	Opencast
31	gitti	BHUPENDRA SINGH TOMAR- SHRI CHHATAR SINGH TOMAR- GARAM. BEDIYA	9516855005- BEDIYA	800 29-12-2015	4.000	05/01/201 6-	04/01/2026	-	-	10-06-2018	Working	Non- Captive	Yes/100 10/08/2016	N 21°59'47.88" E 75°52'48.55" E N 21°59'45.60" E 75°52'56.50" E N 21°59'41.33" E 75°52'38.48" E	Opencast

समिति द्वारा अनुमोदित

प्रभारी अधिकारी
जनित शाखा
जिला-खरबोन (म.प्र.)

(Signature)

32	gitti	ASHISH JAISWAL-SHRI HARISHANKAR JAISWAL- KHARGONE	9826720209- KHARGON E	909 01-02-2016	3.000	23/02/201 6-	22/02/2026	-	-	30-11-2017	Working	Non- Captive	Yes/134 24/12/2016	N21°50'13.24" E 75°55'03.50" N21050'13.39" E 75055'10.17" N21050'14.73" E 75055'10.23" N21050'14.94" E 75055'12.92"	Opencast
33	gitti	RAGHVENDRA SINGH-SHRI VIJAYENDRA SINGH-24 B SHRIJI, VATIKA PIPLIYAANA INDORE	9425077761- INDORE	967 16-02-2016	2.000	14/03/201 6-	13/03/2026	-	-	15-04-018	Working	Non- Captive	Yes/130 24/12/2016	22 2'25.677"N 76 6' 30.445"E 22 2'24.705"N 76 6' 30.372"E 22 2'20.948"N 76 6' 23.021"E 22 2'24.244"N 76 6' 22.576"E 22 2'24.331"N 76 6' 23.623"E 22 2'26.442"N 76 6' 23.503"E 22 2'26.46"N 76 6' 26.978"E 22 2'25.47"N 76 6' 27.11"E	Opencast
34	gitti	NILESH KUMAR DIVEKAR- KISHORE DIVEKAR M.G. ROAD BARWAH	9754142200- BARWAH	66 29-04-2016	2.305	16-09- 2005	15-09- 2015	16/09/2015	15/09/2025	22-03-2019	Non-Working	Non- Captive	Yes/55 30/05/2016	22°13'51.56"N 75°54'43.38" 22°13'91.98"N 75°54'57.32" 22°13'47.46"N 75°54'44.05" 22°13'47.87"N 75°54'58.35"	Opencast
35	gitti	RUBI-SHRI RAJENDRA- DIST. SEHORE	9826495849- SEHORE	120 11-05-2016	2.000	18/07/201 6- 17/07/202 6	17/07/2026	-	-	25-08-2018	Working	Non- Captive	Yes/75 30/05/2016	21°57'36.29"N 75°50'28.36" 21°57'35.07"N 75°50'32.74" 21°57'33.32"N 75°50'8.44" 21°57'33.19"N 75°50'32.10"	Opencast
36	gitti	MAHMOOD KHAN-SHRI NYAMAT KHAN-SAGDIYA	9926646762- SAGDIYA	260 28-06-2016	1.520	12/09/201 6-	11/09/2026	-	-	25-09-2018	Working	Non- Captive	Yes/53 30/05/2016	22°02'.26"01N 76°08'17.08" E 22°02'.26"02"N 76°08'22.72" E 22°02'.22"66"N 76°08'21.87" E	Opencast
37	gitti	NITESH SOLANKI-SHRI TARA CHANDRA SOLANKI-3/78 AB ROAD,	6264697088- Khargonc	745 26-09-2016	3.000	23/11/201 6-	22/11/2026	-	-	1-04-2018	Non-Working	Non- Captive	Yes 136-37 24-12-2016	21°52'.11"29 "N 75°31'44.28" E 21°52'.11"87 "N 75°31'50.51" E 21°52'.07"50 "N 75°31'50.70" E 21°52'.07"40 "N 75°31'49.49" E 21°52'.07"99 "N 75°31'49.35" E	Opencast

समिति द्वारा अनुमोदित

प्रभारी अधिकारी
स्वनिज शाखा
जिला-खरखीन (म.प्र.)

State Level Environment Impact
Assessment Authority, M.P.
(EPCO)
E-5, A...

													21°52'08"33 "N 75°31'44.92" E		
38	gitti	RAJESH BADOLE-Nootan nagar Colony Khargone	9425980859- Khargone	943 01-12-2016	1.000	17-11- 2006	16-11- 2016	17/11/2016	16/11/2026	30-05-018	Non-Working	Non- Captive	Yes 166-67 30-01-2017	21°52'27.60"N 75°41'16.63" E 21°52'27.67"N 75°41'20.38" E 21°52'24.29"N 75°41'20.57" E 21°52'24.13"N 75°41'16.73" E	Opencast
39	gitti	BENIRAM-SHRI PREMLAL PATEL-GRAM, KATORA TEH. SANAWAD	9977774657- Katora	991 19-12-2016	2.000	21/12/201 6-	20/12/2026	-	-	10-11-018	Working	Non- Captive	Yes/176 23/05/2017	22°06'13.220" N 75°47'10.260" E 22°06'12.957" N 75°47'11.982" E 22°06'12.693" N 75°47'13.704" E 22°06'12.430" N 75°47'15.426" E 22°06'12.172" N 75°47'17.116" E 22°06'10.550" N 75°47'16.905" E 22°06'10.585" N 75°47'16.690" E 22°06'10.122" N 75°47'16.643" E 22°06'09.832" N 75°47'15.2030" E 22°06'08.910" N 75°47'15.066" E 22°06'08.980" N 75°47'13.323" E 22°06'09.096" N 75°47'11.583" E 22°06'09.237" N 75°47'09.845" E 22°06'09.254" N 75°47'09.636" E 22°06'10.863" N 75°47'09.8890" E 22°06'12.472" N 75°47'10.143" E	Opencast
40	gitti	SHAIENDRA SINGH SOLANKI-SHRI YASHAVANTSIN GH SOLANKI- SANAVAD	9926097110- Sanawad	1053 07-01-2017	2.000	09/03/201 7-	8/3/2027	-	-	22-09-2017	Working	Non- Captive	Yes/192 23/5/2017	22°11'03.23" N 76°05'07.65" E 22°11'03.21" N 76°05'08.52" E 22°11'01.02" N 76°05'17.10" E 22°11'00.63" N 76°05'17.07" E 22°10'58.01" N 76°05'09.99" E 22°10'59.23" N 76°05'09.68" E 22°10'59.20" N 76°05'07.80" E	Opencast
41	gitti	AJMUDDIN MEVATI-SHRI	9826213881- BALSAMU	1170 09-02-2017	2.000	28/04/201 7-	27/04/2027	-	-	05-08-2017	Working	Non-	Yes/699042-	22°08'32.19 " N 75°32'09.02" E	Opencast

समिति द्वारा अनुमोदित

प्रभारी अधिकारी
सविज शाखा
जिला-खरबोन (म.प्र.)

(Signature)

State Level Environment Impact
Assessment Authority, M.P.
(EPCO)

		CHIRAGUDDIN MEVATI-BALSAMUD	D									Captive	1/08/218	22°08'30.87" N 75°32'18.76" E 22°08'28.96" N 75°32'18.526"E 22°08'30.32" N 75°32'09.39"E	
42	gitti	SAMRADDHA MUCHHAL-SHRI GHISHILAL MUCHHAL-KHARGONE	7000724288-KHARGON E	1334 20-03-2017	1.680	25-04-2007	24-04-2017	25/04/2017	24/04/2027	11-04-2018	Working	Non-Captive	Yes/80380-21/04/2019	21°47'50.67" E 75°34'01.69" 21°47'59.49" E 75°34'17.98" 21°48'05.75" E 75°34'16.23" 21°47'56.65" E 75°33'58.76"	Opencast
43	gitti	SHREE SYAM INTERPRISES PRO. KIRTI PATIDAR	9926678470-Balsamund	1373 27-03-2017	2.000	11/04/2017-	10/4/2027	-	-	28-03-2021	Working	Non-Captive	Yes/196-23/05/2017	22°12'57.61" N 75°36'33.87" E 22°12'57.75" N 75°36'36.56" E 22°12'52.28" N 75°36'36.91" E 22°12'52.19" N 75°36'34.13" E	Opencast
44	gitti	HARBHAJAN SINGH BHATIA-SHRI DARSHANSINGH BHATIA-PAHADSINGH PURA KHARGONE	9826088578-KHARGON E	1393 31-03-2017	1.817	01-01-2005	31-12-2015	01/01/2015	31/12/2025	25-0-2018	Working	Non-Captive	Yes/2899-20/04/2015	N21°50'07.06" E75°39'44.03" N21050'06.27" E75039'48.86" N21050'03.60" E75039'48.69" N21050'03.54" E75039'44.57"	Opencast
45	gitti	OM PRAKASH BANSAL-SHRI JEEVANDAS BANSAL-PATEL ROAD SANAWAD	SANAWAD 7000885762	F-4/- 19/2014 04-05-2017	1.710	19/05/2017-	18/05/2027	-	-	30-08-2018	Non-Working	Non-Captive	Yes 200-201 18-10-2017	22°11'14.46" N 76°01'57.91" E 22°11'14.62" N 76°02'04.19" E 22°11'11.13" N 76°01'57.51" E	Opencast
46	gitti	VINITA AGRAWAL-SHRI BABAN AGRAWAL-NARAYANDAS COLLONY, KHARGONE	9425087219-KHARGON E	1305 16-05-2017	2.000	16/05/2015-	15/05/2025	-	-	15-08-018	Working	Non-Captive	Yes/178-23/05/2017	N 21°50'44.83" E 75°32'44.83" N 21°50'44.48" E 75°32'24.59" N 21°50'38.44" E 75°32'23.72" N 21°50'33.33" E 75°32'20.47"	Opencast
47	gitti	KULDEEP MAHAJAN-SHRI MUKESH MAHAJAN-VILLAGE PIPRI TEH- THIKRI DISTRICT BARWANI	9630767211-THIKRI	1753 16-06-2017	2.000	20/06/2017-	19/06/2027	-	-	30-06-2019	Non-Working	Non-Captive	Yes/228-18/10/2017	21°58'30.56"N 75°27'00.60"E 21°58'32.08"N 75°27'07.95"E 21°58'28.33"N 75°27'06.96"E 21°58'28.56"N 75°27'01.47"E	Opencast
48	gitti	SANJAY RAGHUVANSHI-SHRI DEVISINGH RAGHUVANSHI-KHARGONE	9827230240-KHARGON E	2938 29-07-2017	1.600	17-09-2007	16-09-2017	17/09/2017	16/09/2027	30-10-018	Working	Non-Captive	Yes/24-18/10/2017	E21°49'56.59" N 75°39'46.18" E21°50'01.36" N 75°40'01.38" E21°50'08.82" N	Opencast

समिति द्वारा अनुमोदित

प्रभारी अधिकारी
खनिज शाखा
जिला-खरखोन (म.प्र.)

State Level Environment Impact
Assessment Authority, M.P.
(EPCO)
Paryavaran Parisar
E-5, Arora Colony, Bhopal (M.P.)

														75°40'05.46" N E21°50'04.60" N 75°39'45.07"	
49	gitti	SATISH JAISWAL-SHRI NANDKISHOR JAISWAL- KHARGONE	9826598310- KHARGON E	1940 29-07-2017	2.000	15-02- 2008	14-02- 2018	15/02/2018	14/02/2028	01-08-2018	Working	Non- Captive	Yes 61-62 30-05-2016	N21°48'07.00" E 75°34'30.15" E N21°48'14.01" E 75°34'45.37" E N21°48'17.57" E 75°34'44.37" E N21°48'10.37" E 75°34'28.98" E	Opencast
50	gitti	SUNIL PATIDAR-SHRI REVARAM PATIDAR- GOLWAVI	9826876510- GOLWAVI	1936 29-07-2017	2.000	15-02- 2008	14-02- 2018	15/02/2018	14/02/2028	08-05-2019	Working	Non- Captive	Yes 220-21 18-10-2017	A21°54'01.59" E 75°27'50.76" E A21°54'02.11" E 75°27'56.71" E A21°54'08.38" E 75°27'56.79" E A21°54'08.16" E 75°27'50.12" E	Opencast
51	gitti	S S STONE CRUSHER-SHRI AJAY RAGHUVANSHI- PAHAD SINGH PURA, KHARGONE	9826555152- KHARGON E	2112 04-09-2017	2.000	13-03- 2008	12-03- 2018	13/03/2018	12/3/2028	05-08-2011	Working	Non- Captive	Yes/26- 18/10/2017	A21°50'35.65" E 75°32'39.78" E A21°50'37.50" E 75°32'46.03" E A21°50'42.20" E 75°32'44.53" E A21°50'39.70" E 75°32'37.80" E	Opencast
52	gitti	LALEET-SHRI SHYAMILAL- BAGOD TEH. BARWAH	9893926518- BARWAH	2162 15-09-2017	2.000	03/10/201 7-	2/10/2027	-	-	07-08-2022	Working	Non- Captive	Yes/214- 18/10/2017	22°20'45.86"N 75°52'15.68"E 22°20'52.18"N 75°52'18.49"E 22°20'39.27"N 75°52'13.85"E 22°20'44.63"N 75°52'13.43"E 22°20'44.95"N 75°52'15.37"E	Opencast
53	gitti	SUNDRAM SUPPLIERS-SHRI AMIT BHAVSAR- KHARGONE	9425088686- KHARGON E	2184 18-09-2014	2.853	08-10- 2008	07-10- 2028	08/10/2018	7/10/2028	07-01-2018	Working	Non- Captive	Yes/120- 10/8/2016	21°48'14.31"N 75°35'08.22"E 21°48'20.38"N 75°35'09.61"E 21°48'16.95"N 75°35'01.95"E 21°48'20.43"N 75°35'00.28"E	Opencast
54	gitti	G.H.V. INDIA. P.V.T. PRO. VIJAPURA SAFIMOHAMMA D-SHRI HUSSEN BHAI MANGI BHAI VIJAPURA- BHIKANGAON	9770552618- BHIKANGA ON	3644 21-02-2018	2.600	08/05/201 8-	9/5/2028	-	-	12-09-2019	Non-Working	Captive	Yes/218- 18/10/2017	21°54'37.75" N 75°57'24.01" E 21°54'38.71" E 75°57'31.32" E 21°54'32.07" E 75°57'31.59" E 21°54'30.34" E 75°57'24.97" E	Opencast
55	gitti	G.H.V. INDIA. P.V.T. PRO.	9770552618- BHIKANGA	2576 04-10-2017	4.000	03/10/201 7-	2/10/2027	-	-	23-02-2018	Non-Working	Captive	Yes/254-	21°37'00.28" N 75°34'43.78" E	Opencast

समिति द्वारा अनुमोदित

प्रभारी अधिकारी
स्वनिज शाखा
जिला-खरबोन (म.प्र.)

State Level Environment Impact
Assessment Authority, M.P.
(EPCO)
Paryavaran Parishad
E-5, Arera Colony, Bhopal (M.P.)

		VIJAPURA SAFIMOHAMMA D-SHRI HUSSEN BHAI MANGI BHAI VIJAPURA- BHIKANGAON	ON									18/06/2018	21°37'00.54" 75°34'52.98" 21°36'58.90" 75°34'53.00" 21°37'53.95" 75°34'46.60" 21°37'53.95" 75°34'45.41" 21°37'55.73" 75°34'45.42" 21°37'55.72" 75°34'43.87"		
56	gitti	NAVEEN KUMAR AGRAWAL-SHRI MANOHAR LAL AGRAWAL- MANDLESHWER	9926088470- MANDLES HWER	2763 25-11-2017	4.000	12/12/201 7	11/12/2027	-	-	07-05-2019	Working	Non- Captive	Yes/274- 18/06/2018	N22°12'24.754" 75°38'08.915" N22°12'24.777" 75°38'10.427" N22°12'24.799" 75°38'11.870" N22°12'24.821" 75°38'13.336" N22°12'24.842" 75°38'14.693" N22°12'24.861" 75°38'15.939" N22°12'23.513" 75°38'15.845" N22°12'22.345" 75°38'15.763" N22°12'21.115" 75°38'15.677" N22°12'19.848" 75°38'15.588" N22°12'18.436" 75°38'15.490" N22°12'18.407" 75°38'14.066" N22°12'18.379" 75°38'12.688" N22°12'28.352" 75°38'11.352" N22°12'28.323" 75°38'09.931" N22°12'28.286" 75°38'08.166" N22°12'19.627" 75°38'08.321" N22°12'20.879" 75°38'08.466" N22°12'22.134" 75°38'08.612" N22°12'23.427" 75°38'08.761"	Opencast
57	gitti	SUNITA AGRAWAL-SHRI PURSHOTTAM AGRAWAL- MANDLESHWER	9926088470- MANDLES HWER	2761 25-11-2017	2.000	12/12/201 7-	11/12/2027	-	-	27-09-2019	Working	Non- Captive	Yes/278- 18/06/2018	N22°12'28.721" E 75°38'05.770" N22°12'28.719" E 75°38'06.612" N22°12'28.718" E 75°38'07.776"	Opencast

समिति द्वारा अनुमोदित

प्रभारी अधिकारी
खनिज शाखा
जिला-खरबोन (म.प्र.)

Level Environment Impact
Assessment Authority, M.P.
(EIA)

Page

5/11

														N22°12'28.771" E 75°38'08.568" N22°12'28.716" E 75°38'09.369" N22°12'27.617" E 75°38'09.243" N22°12'26.714" E 75°38'09.140" N22°12'25.683" E 75°38'09.022" N22°12'24.754" E 75°38'08.915" N22°12'23.586" E 75°38'08.780" N22°12'22.232" E 75°38'08.623" N22°12'22.210" E 75°38'07.816" N22°12'22.184" E 75°38'06.811" N22°12'22.158" E 75°38'05.821" N22°12'22.135" E 75°38'04.922" N22°12'23.327" E 75°38'05.076" N22°12'24.452" E 75°38'05.220" N22°12'25.648" E 75°38'05.375" N22°12'26.815" E 75°38'05.525" N22°12'27.792" E 75°38'05.651"	
58	gitti	ASHOK KUMAR AGRAWAL-SHRI MOHANLAL AGRAWAL- ZIRNIYA ROAD BHIKANGAON	9425981225 ZIRNIYA ROAD BHIKANGA ON-	2832 06-12-2017	3.000	18/12/201 7-	17/12/2027	-	-	26-02-2020	Working	Non- Captive	Yes/240- 20/12/2017	21°53'17.57"N 75°57'38.75"E 21°53'17.58"N 75°57'41.04"E 21°53'12.03"N 75°57'41.67"E 21°53'11.82"N 75°57'38.12"E	Opencast
59	gitti	PRASSUN MUCHHAL-SHRI MANGILAL MUCHHAL- KHARGONE	9343948480 Khargone	47 09-04-2018	2.000	08/05/201 8-	7/5/2028	-	-	11-09-2019	Working	Non- Captive	Yes/276- 18/06/2018	21°54'.41"77 "N 75°42'02.02" E 21°54'.41"91 "N 75°42'07.36" E 21°54'.39"83 "N 75°42'07.49" E 21°54'.39"75 "N 75°42'04.60" E 21°54'.33"62 "N 75°42'04.72" E 21°54'.33"62 "N 75°42'03.45" E 21°54'.35"64 "N 75°42'02.32" E	Opencast
60	gitti	SUSHIL JOSHI- SHRI	9826584614 khargone	221 11-05-2018	1.000	08/05/201 8-	7/5/2028	-	-	17-07-2019	Working	Non-	Yes/280-	21°51'06.19"N 75°40'66.19" E	Opencast

समिति द्वारा अनुमोदित

प्रभारी अधिकारी
सहजिद शाखा
जिला-धरबीज (म.प्र.)

State Level Environment Impact
Assessment Authority. M.P.
(EPCO)
Paryavaran Pariser
E-5, Arera Colony, Bhopal (M.P.)

		RAJNIKANT JOSHI-BHOKLE - COLONY KHARGONE										Captive	18/06/2018	21°51'08.34"N 75°40'50.70" E 21°51'04.70"N 75°40'52.41" E 21°51'05.36"N 75°40'50.70" E 21°51'04.83"N 75°40'47.14" E	
61.	gitti	ANAND JAISWAL-SHRI RAMNARAYAN JAISWAL-117 MG ROAD BHIKANGAON	9981464394- 117 MG ROAD BHIKANGA ON	562 06-08-2018	1.000	24/07/201 8 -	23/07/2028	-	-	26-03-2019	Working	Non- Captive	Yes/292- 04/10/2018	21°54'29.07" 75°57'12.08" 21°54'29.45" 75°57'16.86" 21°54'26.95" 75°57'16.74" 21°54'26.61" 75°57'12.36"	Opencast
62.	gitti	SHREE SANWARIYA INFRASTRUETU RE-SMT SANGEETA SAWNER- KHANDWA	9753022607- KHANDWA	564 06-08-2017	1.880	24/07/201 8 -	23/07/2028	-	-	21-01-2020	Working	Non- Captive	Yes/300- 04/10/2018	21°44'01.84"N 76°02'16.26" E 21°44'01.47"N 76°02'32.52" E 21°43'59.86"N 76°02'32.34" E 21°44'00.25"N 76°02'18.18" E 21°43'56.42"N 76°02'18.54" E 21°43'56.75"N 76°02'15.88" E	Opencast
63.	gitti	ARVIND JAISWAL-SHRI PREMLAL JAISWAL- VILLAGE DONDVA TEHSIL BHIKANGAON	8770455170- DONDVA	596 20-08-2018	2.000	20/08/201 8 -	19/08/2028	-	-	05-10-2020	Working	Non- Captive	Yes/294- 04/10/2018	22°00'18.01"N 76°08'29.03" 22°00'18.18"N 76°08'32.72" 22°00'12.15"N 76°08'32.82" 22°00'12.15"N 76°08'28.91"	Opencast
64.	gitti	GAJENDRA SONIYAR-SHRI DHANNALAL SONIYAR- TALAB CHOUK, KHARGONE	9826672902- KHARGON E	1346 19-12-2018	2.000	19/12/201 8 -	18/12/2028	-	-	-	Working	Non- Captive	Yes/290- 04/10/2018	21°43'38.57 "N 75°38'37.40"E 21°43'39.16 "N 75°38'41.07"E 21°43'33.03 "N 75°38'42.30"E 21°43'332.43 "N 75°38'38.72"E	Opencast
65.	gitti	KARTAR CHOUHAN-SHRI PUNIYA CHOUHAN- GRAM SATWADA TEH. BHIKANGAON	9926606846- khargone	587 20-08-2018	1.000	20/08/201 8 -	19/08/2028	-	-	04-05-2021	Non-Working	Non- Captive	Yes/304- 04/10/2018	21°45'05.87"N 75°53'58.53" E 21°45'06.52"N 75°54'00.96" E 21°45'04.43"N 75°54'02.54" E	Opencast
66.	gitti	MEHMOOD RIYAJ-SHRI MANJUR HUSAIN MALIK- B.T.I. ROAD, KHARGONE	7771010792- KHARGON E	913 28-09-2018	2.000	28/09/201 8 -	27/09/2028	-	-	22-10-2020	Non-Working	Non- Captive	Yes 304-305 04-10-2018	21°48'34"44 "N 75°31'52.10" E 21°48'34"56 "N 75°31'53.61" E 21°48'31"57 "N 75°31'55.61" E 21°48'31"04 "N	Opencast

प्रभाषी अद्वितीय
समिति द्वारा अनुमोदित

प्रभाषी अद्वितीय
समिति द्वारा अनुमोदित
जि.सं-खरवोज (स.स.)

State Level Environment Impact
Assessment Authority, M.P.
(E.P.CO)
Patyavaran Farisar
E-5, Arera Colony, Bhopal (M.P.)

														75°31'53.43" E 21°48'29"86 "N 75°31'53.39" E 21°48'29"84 "N 75°31'52.23" E 21°48'30"65 "N 75°31'52.21" E 21°48'30"66 "N 75°31'50.42" E 21°48'31"66 "N 75°31'50.56" E 21°48'31"72 "N 75°31'52.25" E	
67	gitti	ANAND JAISWAL-SHRI RAMNARAYAN JAISWAL-117 MG ROAD BHIKANGAON	9981464394- BHIKANGA ON	640 03-02-2021	1.800	03/02/202 1-	02/02/2031	-	-	-	Working	Non- Captive	Yes 8680 19-12-2021	21°48'16.16" 75°51'14.02" 21°48'16.16" 75°51'17.53" 21°48'10.44" 75°51'17.53" 21°48'10.44" 75°51'14.02"	Opencast
68	gitti	J.P GRUP & CON. (ANADN SEN)	9977929999- Khargone	2620 18-09-2020	1.800	24/09/202 0-	23/09/2030	-	-	-	Non-Working	Non- Captive	Yes 4335 27-10-2020	21°44'00.00"N 75°41'01.16" 21°44'00.91"N 75°41'05.30" 21°43'51.0"N 75°41'04.13"	Opencast
69	gitti	PRATHVIRAJ S/O ARJUN SINGH SOLANKI	9826742212- Khargone	948 24-02-2022	2.000	24/02/202 1-	23/02/2031	-	-	-	Non-Working	Non- Captive	Yes 8799 12-01-2022	21°57'35.214"N 75°38'21.677" E 21°57'30.279"N 75°38'15.478" E 21°57'28.084"N 75°38'17.44" E 21°57'32.899"N 75°38'23.395" E	Opencast
70	gitti	CHANDA STONE CRUSHER	8839024724- Indore	858 16-02-2021	1.700	16/02/202 1-	15/02/2031	-	-	23-01-2022	Non-Working	Non- Captive	Yes/762/SEIAA /21- 19/05/221	22°01'18.630" N 75°54'39.765" E 22°01'19.205" N 75°54'41.742" E 22°01'16.206" N 75°54'42.511" E 22°01'13.221" N 75°54'43.249" E 22°01'08.324" N 75°54'42.525" E 22°01'12.800" N 75°54'41.024" E 22°01'15.996" N 75°54'40.153" E	Opencast
71	gitti	KAIRA CON. (AASHUTO AGRAWAL)	9754380705- Khargone	496 23-01-2021	4.000	3/8/2021	2/8/2031	-	-	29-06-2022	Working	Non- Captive	Yes/918- 24/05/2021	E554974 To 554629, N2424472 To 242407	Opencast
72	gitti	JAGDISH KUSHWAH - Add. Mandleshwer	9926088470- Mandleshwer	2088 28-12-2016	2.000	29/08/201 7	28/08/2027	-	-	15-11-2021	Non-Working	Non- Captive	Yes/216- 18/10/2017	22°13'49.28" N 75°41'07.33" E 22°13'48.57" N 75°41'13.80" E 22°13'44.55" N	Opencast

समिति द्वारा अनुमोदित

प्रभारी अधिकारी
खनिज शाखा
जिला-खरबोज (म.प्र.)

State Level Environment Impact
Assessment Authority, M.P.
(EPCO)
Paryavaran Parisar
E-5, Arera Colony, Bhopal (M.P.)

														75°41'13.62" E 22°13'46.15" N 75°41'07.443" E	
73	gitti	SANTOSH S/O SYAMLAL CHANDEL add. BHIKANGAV	8839691007- BHIKANGA V	2622 18-09-2020	1.000	16/04/202 1	15/04/2031	-	-	-	Non-Working	Non- Captive	Yes 4541 27-10-2020	N21°56'07.50" 76°04'09.74" N21°56'08.32" 76°04'13.75" N21°56'05.41" 76°04'14.04" N21°56'05.17" 76°04'10.01"	Opencast
74	gitti	NISHANT S/O ARVIND JAISHWAL - BHIKANGAV	9424055435- add. BHIKANGA V	526 04-07-2019	2.000	18/07/202 1-	17/07/2031	-	-	-	Non-Working	Non- Captive	Yes 9106 03-07-2022	21°47'08.91 " N 75°57'13.86" E 21°47'09.00 " N 75°57'23.16" E 21°47'04.50 " N 75°47'16.70" E	Opencast
75	gitti	ASHOK MAINA- SHRI DEVI SINGH MAINA- MOTIPURA KHARGONE	7999939055- KHARGON E	374 14-06-2019	3.000	03/07/201 9-	2/7/2029	-	-	22-10-2020	Non-Working	Non- Captive	Yes/1173- 17/09/2019	21°47'32.37 " N 75°38'53.30" E 21°47'31.91 " N 75°39'00.12" E 21°47'30.57 " N 75°38'59.89" E 21°47'31.58 " N 75°38'56.66" E 21°47'31.05 " N 75°38'56.64" E 21°47'29.90 " N 75°38'55.92" E 21°47'30.93 " N 75°38'53.06" E	Opencast
76	Murrum	SADIK KHAN- SHRI SHABBIR KHAN-GRAM SALA TEH, KASRAWAD	9669978786 Khalghat	1673 27-04-2015	2.000	18/05/201 5-	17/05/2025	-	-	05-10-2020	Working	Non- Captive	Yes/600- 06/06/2020	N22°07'27.97 " E 75°28'31.83" N22°07'28.35 " E 75°28'35.55" N22°07'24.35 " E 75°28'35.48" N22°07'23.82 " E 75°28'31.76"	Opencast
77	Murrum	RAJESH SHARMA-SHRI DINDAYAL SHARMA- GAYATRI NAGAR, KHARGONE	9826580817- Khargone	826 05-01-2016	2.000	05/05/201 6-	4/5/2026	-	-	09-04-2018	Working	Non- Captive	Yes/108- 10/08/2016	N21°47'32.35 " E 75°38'53.30" N21°47'31.91 " E 75°39'00.12" N21°47'30.57 " E 75°38'59.89" N22°47'31.58 " E 75°38'56.66" N22°47'31.05 " E 75°38'56.64" N22°47'29.90 " E 75°38'65.92" N22°47'30.93 " E 75°38'53.06"	Opencast
78	Murrum	MEHMOOD RIYAJ-SHRI MANJUR HUSAIN MALIK- B.T.I. ROAD, KHARGONE	7771010792- KHARGON E	649 06-09-2016	1.445	12/09/201 6-	11/9/2026	-	-	12-12-2019	Working	Non- Captive	Yes/126- 24/12/2016	21°48'54.71"N 75°32'35.20"E 21°48'53.10"N 75°32'39.38"E 21°48'54.04"N	Opencast

समिति द्वारा अनुमोदित

प्रधानी अधिकारी
कविज शाह
जिला-जालंधर (M.P.)

State Level Environment Impact
Assessment Authority, M.P.
(EPCO)
Parvatan Parisar
E-5, Arera Colony, Bhopal (M.P.)

														75°32'41.07"E 21°48'54.71"N 75°32'35.20"E 21°48'48.08"N 75°32'35.54"E	
79	Murum	BHURE SINGH-SHRI DOULAT SINGH-KHALKHURD TEH. KASRAWAD	Balkhad 9752211455	800 15-11-2016	2.000	07/04/2017 7-	6/4/2027	-	-	-	Working	Non-Captive	Yes 182-83 23-05-2017	22°07'24.83"N 75°28'37.97" 22°07'25.27"N 75°28'44.94" 22°07'22.10"N 75°28'45.05" 22°07'21.65"N 75°28'38.10"	Opencast
80	Murum	WASIM KHAN-SHRI AJMUDDIN MEVAETI-BALSAMUD	9826213881-BALSAMUD	1172 09-02-2017	2.000	28/04/2017	27/04/2027	-	-	06-03-2019	Non-Working	Non-Captive	Yes 184- 23/05/2017	22°07'39.50" N 75°28'29.82" E 22°07'39.030" N 75°28'39.10"E 22°07'37.02" N 75°28'38.81" E 22°07'38.91" N 75°28'29.72" E	Opencast
81	Murum	NAVEEN KUMAR AGRAWAL-SHRI MANOHAR LAL AGRAWAL-MANDLESHWER	9425333972 Mandleswar	2090 28-08-2017	2.000	29/08/2017	28/08/2027	-	-	01-08-2018	Working	Non-Captive	Yes/21- 18/1/217	22°13'30.90" N 75°41'23.21" E 22°13'31.04" N 75°41'27.83" E 22°13'25.79" N 75°41'27.80" E 22°13'25.73" N 75°41'23.44" E	Opencast
82	Murum	SADIK KHAN-SHRI SHABBIR KHAN-GRAM SALA TEH, KASRAWAD	9669978786 Khalghat	1745 02-03-2019	2.000	7/3/2019	6/3/2029	-	-	08-10-2016	Working	Non-Captive	Yes 5800 26-09-2015	22°07'24.82" N 75°28'37.33" E 22°07'24.05" N 75°28'46.12" E 22°07'21.76" N 75°28'46.10" E 22°07'22.44" N 75°28'37.20" E	Opencast
83	Murum	TRILOK S/O MADHUSUDAN PATEL	9669978786 Khalghat	1743 02-03-2019	2.000	07/03/2019	6/3/2029	-	-	-	Non-Working	Non-Captive	NO	22°07'22.94" N 75°28'46.26" E 22°07'23.04" N 75°28'50.38" E 22°07'19.13" N 75°28'46.49" E 22°07'18.51" N 75°28'42.93" E 22°07'20.24" N 75°28'42.60" E 22°07'20.02" N 75°28'46.24" E	Opencast
84	Murum	SHRI TIRUPATI MINES-KHARGONE	9826584614 KHARGONE	11 03-04-2018	2.000	8/5/2018	7/5/2028	-	-	27-06-2020	Non-Working	Non-Captive	Yes/264- 18/06/218	22°50'59.95" 75°40'27.28" 22°51'02.66" 75°40'31.11" 22°51'03.82" 75°35'50.28" 22°51'01.03" 75°40'36.44" 22°50'59.76"	Opencast


समिति द्वारा अनुमोदित

प्रभारी अधिकारी
स्वच्छता शाखा
जिला-खरबोन (म.प्र.)

State Level Environment Impact
Assessment Authority, M.P.
(EPCO)
Paryavaran, Farisar
E-5, Areta Colony, Bhopal (M.P.)

													75°40'31.56" 22°50'57.84" 75°40'28.36"		
85	gitti	SUKHADEV DAVAR - JHIRNIYA	9657479353 indore		2.000	02-02- 2022 -	1/2/2032	-	-	-	Working	Non- Captive	Yes 9016 15-06-2022	21°36.8'470"N 75°53''52.419" E 21°36.9'340"N 75°53''53.829" E 21°36.9'514"N 75°53''57.808" E 21°36.7'167"N 75°53''58.710" E 21°36.5'771"N 75°53''58.637" E 21°36.5'641"N 75°53''58.907" E 21°36.5'482"N 75°53''52.582" E	Opencast
86	gitti	VIMAL S/O JAGDISH DANGI - BALWADA	9977771897- BALWADA	5334 16-11-2021	1.000	02-12- 2021 -	1/12/2031	-	-	-	Non-Working	Non- Captive	Yes 8942 07-03-2022	N 22°23'36.538" E 75°57'15.481" E N 22°23'37.521" E 75°57'16.586" E N 22°23'37.902" E 75°57'18.495" E N 22°23'35.910" E 75°57'18.632" E N 22°23'33.876" E 75°57'18.757" E N 22°23'33.452" E 75°57'15.986" E	Opencast
87	gitti	SUMIT KANUNGO - BARWAHA	9165234216- - sanavad	6026 02-02-2022	1.900	20-07- 2022	19-07-2032	-	-	-	Non-Working	Non- Captive	Yes 260331 29-04-2022	21°54'13.29" N 75°27'26.12" E 21°54'13.41" N 75°27'27.46" E 21°54'12.73" N 75°27'28.23" E 21°54'11.92" N 75°27'28.44" E 21°54'12.14" N 75°27'29.68" E 21°54'11.74" N 75°27'31.24" E 21°54'11.24" N 75°27'31.26" E 21°54'10.69" N 75°27'32.92" E 21°54'08.07" N 75°27'32.33" E 21°54'09.69" N 75°27'27.03" E 21°54'09.94" N 75°27'27.03" E 21°54'11.31" N 75°27'25.49" E	Opencast

समिति द्वारा अनुमोदित


प्रभारी अधिकारी
खनिज शाखा
जिला-खरबोन (म.प्र.)


State Level Environment Impact
Assessment Authority, M.P.
(EPCO)
Paryavaran Parivar
E-S, Arera Colony, Bhopal, M.P.

88	gitti	Vedika corporation Pro. Amit Jain- khargone	9926790009- Khargone	17 05-04-2018	3.392	03-04- 2018 -	2/4/2028	-	-	-	Non-Working	Non- Captive	Yes 282-83 18-06-2018	21°44'59.196 " N 75°38'21.670" E 21°44'59.199 " N 75°38'24.733" E 21°44'59.262 " N 75°38'27.944" E 21°44'57.010 " N 75°38'28.376" E 21°44'54.709 " N 75°38'28.832" E 21°44'52.612 " N 75°38'30.644" E 21°44'52.317 " N 75°38'28.273" E 21°44'54.396 " N 75°38'27.908" E 21°44'54.176 " N 75°38'25.078" E 21°44'54.025 " N 75°38'21.461" E 21°44'56.862 " N 75°38'21.019" E 21°44'57.332 " N 75°38'21.878" E	Opencast
89	Murrum	PARMEET BHATIYA BARWAHA	8319479701 BARWAH A	2763-65 25-02-2022	2.000	-	-	-	-	-	Non-Working	Non- Captive	Yes 9090 29-04-2022	22°18'08.544" N 76°01'08.756" E 22°18'08.356" N 76°01'14.001" E 22°18'04.027" N 76°01'13.822" E 22°18'04.216" N 76°01'08.575" E	Opencast

LOI Order

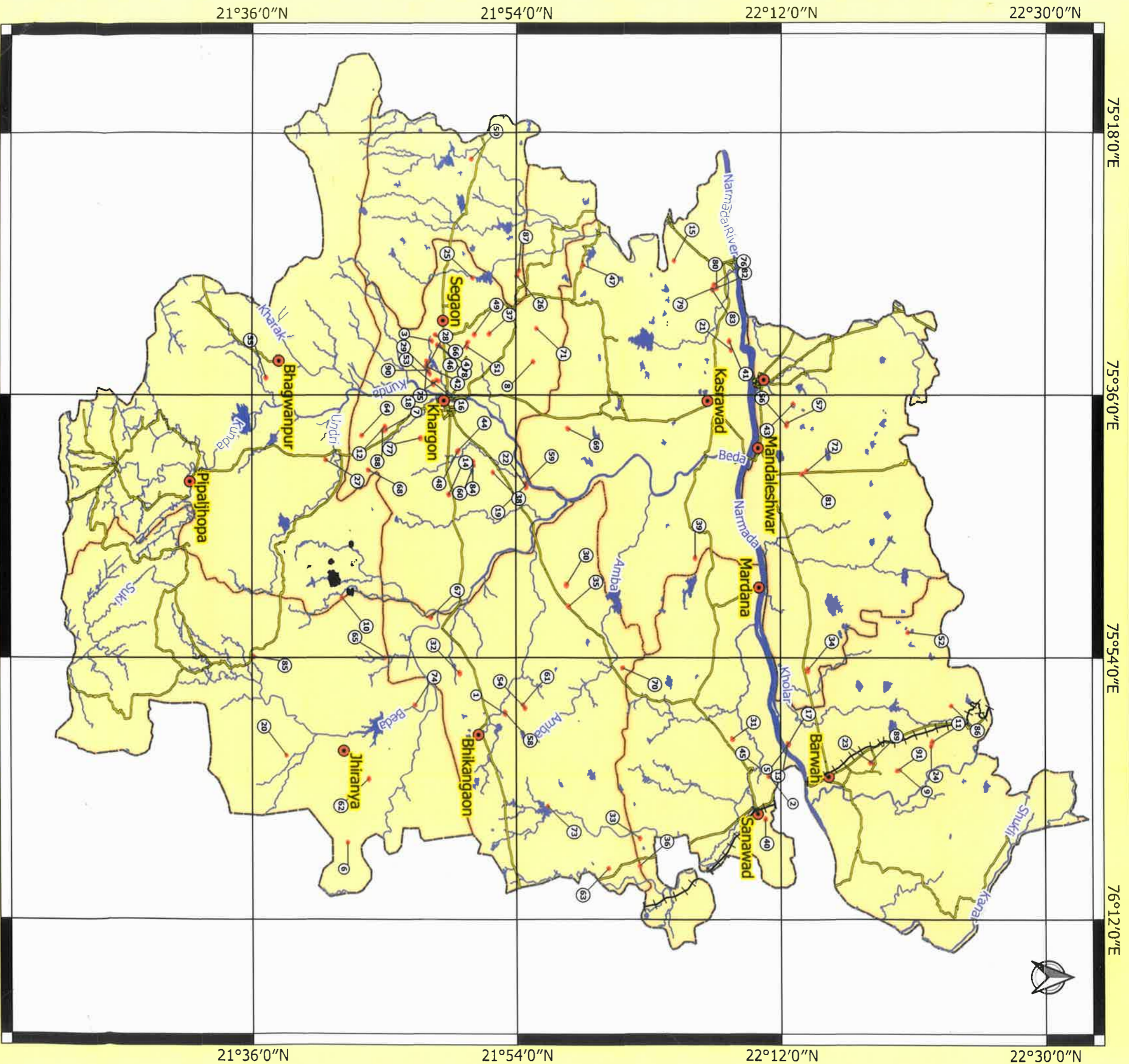
1.	2767-69 25-02-2022	2.000	-	-	-	-	-	-	-	Non-Working	Non- Captive	NO	21°48'04.658" N 75°34'17.654" E 21°48'04.060" N 75°34'22.860" E 21°48'01.750" N 75°34'20.119" E 21°48'0.754" N 75°34'18.589" E 21°48'0.434" N 75°34'13.721" E 21°48'04.658" N 75°34'17.654" E	Opencast
2.	2763-65 25-02-2022	2.000	-	-	-	-	-	-	-	Non-Working	Non- Captive	NO		Opencast
3.	10259-60 29-07-2022	2.00	-	-	-	-	-	-	-	Non working	-	-		

समिति द्वारा अनुमोदित

प्रभारी अधिकारी
खनिज शाखा
दिल्ली-खरखी (2022)

State Level Environment Impact
Assessment Authority, M.P.
(EPCO)
Paryavaran Parisar
E-5, Afera Colony, Bhopal (M.P.)

**MAP SHOWING LOCATION OF STONE AND MURRAM QUARRY LEASE IN DISTRICT KHARGONE,
MADHYA PRADESH**



समिति द्वारा अनुमोदित

- INDEX
- DISTRICT KHARGONE
 - TEHSIL
 - PLACES
 - RAILWAY LINE
 - RIVER/STREAM
 - WATER BODIES
 - SAND QUARRIES

प्रभारी अधिकारी

समिति अध्यक्ष
सविता सोरवीन (म.प्र.)

(Signature)

(Signature)

594वीं राज्य स्तरीय विशेषज्ञ मूल्यांकन समिति की बैठक
दिनांक 21 सितम्बर 2022

	विकास हेतु पूर्व के वर्षों में लीज धारकों द्वारा किये गये वृक्षारोपण की जानकारी, संख्या एवं प्रजातियों की जानकारी दी गई है ।
--	--

आज दिनांक 21/09/22 को जिला सर्वेक्षण रिपोर्ट के प्रस्तुतीकरण के दौरान संचानालय, भौमिकी एवं खनिकर्म, विभाग भोपाल से श्री पी.पी. राय, एवं श्री रमेश पटेल, प्रभारी खनिज अधिकारी के साथ उपस्थित रहे ।

समिति ने पाया कि खनि. अधिकारी, कार्यालय कलेक्टर, (खनिज शाखा) जिला— दतिया के पत्र क्र0 642. 3, दिनांक 13/09/22 के माध्यम खदान की जानकारी निर्धारित प्रपत्र में दे दी गई है तथा लीज धारकों द्वारा किये गये वृक्षारोपण की जानकारी, संख्या, भी प्रस्तुत कर दी गई है। अतः समिति दतिया जिले की जिला सर्वेक्षण रिपोर्ट (अन्य गौण खनिज – रेत को छोड़कर) अनुमोदन हेतु विचारार्थ एवं आगामी कार्यवाही हेतु राज्य स्तरीय पर्यावरण समाघात निर्धारण प्राधिकरण की ओर प्रेषित की जाये ।

14. अन्य गौण खनिज – रेत को छोड़कर , जिला सर्वेक्षण रिपोर्ट, खरगौन

Mineral	Other than Sand
Earlier DSR Discussed	SEAC 576 th Meeting dated 10.06.2022
Approved /or recommend for Updation (if Updation then elaborate issues)	Recommended for DSR Updation (Minor Minerals)
Deliberation in the SEAC 576 th Meeting dated 10.06.2022	<p>राज्य स्तरीय मूल्यांकन समिति की 576वीं बैठक दिनांक 10/06/22</p> <p>जिला सर्वेक्षण रिपोर्ट, जिला खरगौन (म.प्र.) ।</p> <p>राज्य स्तरीय पर्यावरण समाघात निर्धारण प्राधिकरण (सिया) ने पत्र क्रमांक 602 दिनांक 27/05/22 के माध्यम से खरगौन जिले की जिला सर्वेक्षण रिपोर्ट राज्य स्तरीय विशेषज्ञ मूल्यांकन समिति के परीक्षण हेतु भेजी गई है । कार्यालय कलेक्टर, खनिज शाखा खरगौन के पत्र क्रमांक 7676 दिनांक 27/5/22 के माध्यम से सूचित किया गया है कि जिला सर्वेक्षण रिपोर्ट को जिला सूचना केन्द्र के वेब पोर्टल पर 21 दिन की अवधि हेतु अपलोड किया गया । उक्त अवधि की जिला के सर्वेक्षण रिपोर्ट में कोई आपत्ति/सुझाव प्राप्त नहीं हुए, अतएव गठित समिति द्वारा आवश्यक संशोधन कर जिला सर्वेक्षण रिपोर्ट तैयार की गई और इस कार्यालय के पत्र क्रमांक 7661 दिनांक 24/05/22 को कलेक्टर महोदय से अनुशंसा सहित सदस्य सचिव, सिया/सेक को भेजी गई । उक्त जिला सर्वेक्षण रिपोर्ट, राज्य स्तरीय विशेषज्ञ मूल्यांकन समिति के सदस्यों को दिनांक 02/06/22 (सॉफ्टकापी) को प्रेषित की गई थी तथा उस पर चर्चा राज्य स्तरीय मूल्यांकन समिति की 576वीं बैठक दिनांक 10/06/22 में प्रस्तावित की गई ।</p> <p>राज्य स्तरीय विशेषज्ञ मूल्यांकन समिति की 576वीं बैठक दिनांक 10/06/22 में खरगौन जिले की जिला सर्वेक्षण रिपोर्ट पर चर्चा की गई । चर्चा के दौरान खनिज विभाग, खरगौन की ओर से श्री सावन चौहान, प्रभारी खनिज अधिकारी ऑनलाईन उपस्थित हुए जिसमें पाया गया कि :-</p> <p>➤ प्रस्तुत जिला सर्वेक्षण रिपोर्ट पर्यावरण, वन एवं जलवायु परिवर्तन मंत्रालय, नई दिल्ली द्वारा जारी अधिसूचना दिनांक 25/07/2018 में निर्धारित फार्मट अनुसार नहीं बनाई गई है तथा कई जानकारियाँ वांछित तालिका में नहीं दी गई है जिस कारण रिपोर्ट अपूर्ण है।</p>

594वीं राज्य स्तरीय विशेषज्ञ मूल्यांकन समिति की बैठक
दिनांक 21 सितम्बर 2022

	<p>➤ बिंदु क्रमांक-26 की जानकारी जो माईनर मिनरल (रेत छोड़कर) से संबंधित है, के अवलोकन से ज्ञात होता है कि जिले में हरित क्षेत्र के विकास हेतु खदानों में वृक्षारोपण की जानकारी नहीं दी गई है, जिसको अद्यतन किया जाना चाहिए। साथ ही निर्धारित लक्ष्य के विरुद्ध कितना वृक्षारोपण किस वर्ष किया है, उसको भी अंकित किया जाना चाहिए।</p> <p>➤ इसी प्रकार जिले में स्वीकृत/प्रस्तावित खदानों को को-आर्डिनेट के अनुसार डिजिटार्इज मैप (आर्क व्यू / गूगल अर्थ कम्पेरेवल - सी.डी.में) भी संलग्न किया जाये ताकि पर्यावरण अभिस्वीकृति के समय खदानों की सही स्थिति ज्ञात करने में तथा 500 मीटर के अंदर स्थित अन्य स्वीकृत खदानों की जानकारी प्राप्त करने में सुविधा हो।</p> <p>➤ समिति ने यह भी सुझाव दिया कि सभी खनिज अधिकारी अपनी साईट विजिट के दौरान खदान द्वारा किये जा रहे पर्यावरणीय एवं सामाजिक पहलुओं का भी अवलोकन करें एवं यदि कोई पर्यावरणीय संवेदनशीलता दृष्टिगत हो, जिस पर ध्यान दिया जाना आवश्यक हो तो संबंधित तथ्यों से राज्य स्तरीय पर्यावरण समाघात निर्धारण प्राधिकरण को उचित कार्यवाही हेतु अवगत करायें।</p> <p>चर्चा उपरांत समिति की यह अनुशंसा है कि खरगौन जिले की जिला सर्वेक्षण रिपोर्ट को समिति द्वारा सुझाई गई उपरोक्त अनुशांसाओं के तारतम्य में अद्यतन (अपडेट) किया जाये तथा संशोधित जिला सर्वेक्षण रिपोर्ट पर्यावरण, वन एवं जलवायु परिवर्तन मंत्रालय, नई दिल्ली द्वारा जारी अधिसूचना दिनांक 25/07/2018 के अनुसार पुनः प्रस्तुत की जाये। ऑन लाईन उपस्थित प्रभारी खनिज अधिकारी को भी उपरोक्त संदर्भ में समझाईश दी गई तथा पर्यावरण, वन एवं जलवायु परिवर्तन मंत्रालय, नई दिल्ली द्वारा जारी अधिसूचना दिनांक 25/07/2018 के निर्धारित फार्मेट अनुसार जिला सर्वेक्षण रिपोर्ट को अद्यतन कर लें। तदनुसार प्रकरण आगामी कार्यवाही राज्य स्तरीय पर्यावरण समाघात निर्धारण प्राधिकरण की ओर अग्रिम कार्यवाही हेतु प्रेषित है।</p>
Revised DSR received from District Collectorate (Mining)	Vide District Collectorate (Mining) Office, Khargone , No. 8268 dated 15.09.2022
SEAC meeting dated 21/09/22	<ul style="list-style-type: none"> ● जिले की जिला सर्वेक्षण रिपोर्ट के टेबिल क्रमांक- (Annexure-R-1) में खदान की जानकारी निर्धारित प्रपत्र में दे दी गई है। ● जिले में हरित क्षेत्र के विकास हेतु पूर्व के वर्षों में लीज धारकों द्वारा किये गये वृक्षारोपण की जानकारी, संख्या एवं प्रजातियों की जानकारी टेबिल क्रमांक-12 (पेज क्र०. 51 से 59) में दी गई है।

आज दिनांक 21/09/22 को जिला सर्वेक्षण रिपोर्ट के प्रस्तुतीकरण के दौरान संचानालय, भौमिकी एवं खनिकर्म, विभाग भोपाल से श्री पी.पी. राय, एवं श्री सावन चौहान, प्रभारी खनिज अधिकारी के साथ उपस्थित रहे।

समिति ने पाया कि खनि. अधिकारी, कार्यालय कलेक्टर, (खनिज शाखा) जिला- खरगौन के पत्र क्र० 8268, दिनांक 15/09/22 के माध्यम खदान की जानकारी निर्धारित प्रपत्र में दे दी गई है तथा लीज धारकों द्वारा किये गये वृक्षारोपण की जानकारी, संख्या, भी प्रस्तुत कर दी गई है। अतः समिति खरगौन जिले की जिला सर्वेक्षण रिपोर्ट (अन्य गौण खनिज - रेत को छोड़कर) अनुमोदन हेतु विचारार्थ एवं आगामी कार्यवाही हेतु राज्य स्तरीय पर्यावरण समाघात निर्धारण प्राधिकरण की ओर प्रेषित की जाये।

राज्य स्तरीय समाघात निर्धारण प्राधिकरण (SEIAA) द्वारा विस्तृत चर्चा एवं विचार विमर्श उपरांत SEAC की 594वीं बैठक दिनांक 21/09/2022 की अनुशंसा को मान्य करते हुए कटनी (रेत खनिज) की जिला सर्वेक्षण रिपोर्ट का अनुमोदन SEAC द्वारा सुझाई गई उपरोक्त अनुशंसाओं के साथ किया जाता है।

तदनुसार जिला कलेक्टर, कटनी को जिला सर्वेक्षण रिपोर्ट जिला पोर्टल पर अपलोड करवाये जाने एवं संचालक भौमिकी तथा खनिकर्म को सूचित किया जाये।

26. जिला सर्वेक्षण रिपोर्ट दतिया –अन्य गौण खनिज – रेत को छोड़कर

राज्य स्तरीय समाघात निर्धारण प्राधिकरण द्वारा 751वीं बैठक दिनांक 14.10.2022 में निम्नानुसार निर्णय लिया गया :-

राज्य स्तरीय विशेषज्ञ मूल्यांकन समिति (SEAC) की 594वीं बैठक दिनांक 21/09/2022 में दतिया (अन्य गौण खनिज – रेत को छोड़कर) की जिला सर्वेक्षण रिपोर्ट में निम्नानुसार सुझाव सहित अनुशंसा की गई है।

".....समिति की अनुशंसा है कि दतिया जिले की जिला सर्वेक्षण रिपोर्ट (अन्य गौण खनिज – रेत को छोड़कर) अनुमोदन हेतु विचारार्थ एवं आगामी कार्यवाही हेतु राज्य स्तरीय पर्यावरण समाघात निर्धारण प्राधिकरण की ओर प्रेषित की जाये।"

राज्य स्तरीय समाघात निर्धारण प्राधिकरण (SEIAA) द्वारा विस्तृत चर्चा एवं विचार विमर्श उपरांत SEAC की 594वीं बैठक दिनांक 21/09/2022 की अनुशंसा को मान्य करते हुए दतिया (अन्य गौण खनिज – रेत को छोड़कर) की जिला सर्वेक्षण रिपोर्ट का अनुमोदन SEAC द्वारा सुझाई गई उपरोक्त अनुशंसाओं के साथ किया जाता है।

तदनुसार जिला कलेक्टर, दतिया को जिला सर्वेक्षण रिपोर्ट जिला पोर्टल पर अपलोड करवाये जाने एवं संचालक भौमिकी तथा खनिकर्म को सूचित किया जाये।


27. जिला सर्वेक्षण रिपोर्ट – खरगौन अन्य गौण खनिज रेत को छोड़कर

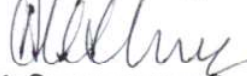
राज्य स्तरीय समाघात निर्धारण प्राधिकरण द्वारा 751वीं बैठक दिनांक 14.10.2022 में निम्नानुसार निर्णय लिया गया :-


राज्य स्तरीय विशेषज्ञ मूल्यांकन समिति (SEAC) की 594वीं बैठक दिनांक 21/09/2022 में खरगौन अन्य गौण खनिज रेत को छोड़कर की जिला सर्वेक्षण रिपोर्ट में निम्नानुसार सुझाव सहित अनुशंसा की गई है।

".....समिति की अनुशंसा है कि खरगौन जिले की जिला सर्वेक्षण रिपोर्ट (अन्य गौण खनिज – रेत को छोड़कर) अनुमोदन हेतु विचारार्थ एवं आगामी कार्यवाही हेतु राज्य स्तरीय पर्यावरण समाघात निर्धारण प्राधिकरण की ओर प्रेषित की जाये।"

राज्य स्तरीय समाघात निर्धारण प्राधिकरण (SEIAA) द्वारा विस्तृत चर्चा एवं विचार विमर्श उपरांत SEAC की 594वीं बैठक दिनांक 21/09/2022 की अनुशंसा को मान्य करते हुए खरगौन अन्य


(श्रीमन् शुक्ला)
सदस्य सचिव


(अनिल कुमार शर्मा)
सदस्य


(अरुण कुमार भट्ट)
अध्यक्ष

गौण खनिज रेत को छोड़कर की जिला सर्वेक्षण रिपोर्ट का अनुमोदन SEAC द्वारा सुझाई गई उपरोक्त अनुशंसाओं के साथ किया जाता है।

तदनुसार जिला कलेक्टर, खरगौन को जिला सर्वेक्षण रिपोर्ट जिला पोर्टल पर अपलोड करवाये जाने एवं संचालक भौमिकी तथा खनिकर्म को सूचित किया जाये।

28. जिला सर्वेक्षण रिपोर्ट जिला – सतना (अन्य गौण खनिज – रेत को छोड़कर)

राज्य स्तरीय समाघात निर्धारण प्राधिकरण द्वारा 751वी बैठक दिनांक 14.10.2022 में निम्नानुसार निर्णय लिया गया :-

राज्य स्तरीय विशेषज्ञ मूल्यांकन समिति (SEAC) की 594वीं बैठक दिनांक 21/09/2022 में सतना (अन्य गौण खनिज – रेत को छोड़कर) की जिला सर्वेक्षण रिपोर्ट में निम्नानुसार सुझाव सहित अनुशंसा की गई है।

".....समिति की अनुशंसा है कि सतना जिले की जिला सर्वेक्षण रिपोर्ट (अन्य गौण खनिज – रेत को छोड़कर) अनुमोदन हेतु विचारार्थ एवं आगामी कार्यवाही हेतु राज्य स्तरीय पर्यावरण समाघात निर्धारण प्राधिकरण की ओर प्रेषित की जाये। "

राज्य स्तरीय समाघात निर्धारण प्राधिकरण (SEIAA) द्वारा विस्तृत चर्चा एवं विचार विमर्श उपरांत SEAC की 594वीं बैठक दिनांक 21/09/2022 की अनुशंसा को मान्य करते हुए सतना (अन्य गौण खनिज – रेत को छोड़कर) की जिला सर्वेक्षण रिपोर्ट का अनुमोदन SEAC द्वारा सुझाई गई उपरोक्त अनुशंसाओं के साथ किया जाता है।

तदनुसार जिला कलेक्टर, सतना को जिला सर्वेक्षण रिपोर्ट जिला पोर्टल पर अपलोड करवाये जाने एवं संचालक भौमिकी तथा खनिकर्म को सूचित किया जाये।


29. जिला सर्वेक्षण रिपोर्ट – नरसिंहपुर (रेत खनिज)

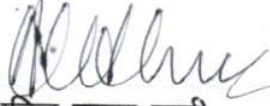
राज्य स्तरीय समाघात निर्धारण प्राधिकरण द्वारा 751वी बैठक दिनांक 14.10.2022 में निम्नानुसार निर्णय लिया गया :-

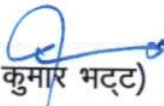
राज्य स्तरीय विशेषज्ञ मूल्यांकन समिति (SEAC) की 594वीं बैठक दिनांक 21/09/2022 में नरसिंहपुर (रेत खनिज) की जिला सर्वेक्षण रिपोर्ट में निम्नानुसार सुझाव सहित अनुशंसा की गई है।

".....समिति की अनुशंसा है कि नरसिंहपुर जिले की जिला सर्वेक्षण रिपोर्ट (रेत खनिज) अनुमोदन हेतु विचारार्थ एवं आगामी कार्यवाही हेतु राज्य स्तरीय पर्यावरण समाघात निर्धारण प्राधिकरण की ओर प्रेषित किया जाये।

राज्य स्तरीय समाघात निर्धारण प्राधिकरण (SEIAA) द्वारा विस्तृत चर्चा एवं विचार विमर्श उपरांत SEAC की 594वीं बैठक दिनांक 21/09/2022 की अनुशंसा को मान्य करते हुए नरसिंहपुर (रेत खनिज) की जिला सर्वेक्षण रिपोर्ट का अनुमोदन SEAC द्वारा सुझाई गई उपरोक्त अनुशंसाओं के साथ किया जाता है।


(श्रीमन् शुक्ला)
सदस्य सचिव


(अनिल कुमार शर्मा)
सदस्य


(अरुण कुमार भट्ट)
अध्यक्ष



राज्य स्तरीय पर्यावरण समाघात निर्धारण प्राधिकरण, म.प्र. (पर्यावरण, वन एवं जलवायु परिवर्तन मंत्रालय, भारत सरकार)

पर्यावरण नियोजन एवं समन्वय संगठन
पर्यावरण परिसर, ई-5, अरेरा कॉलोनी
भोपाल-462016 (म.प्र.)

वेबसाइट- <http://www.mpseiaa.nic.in>

दूरभाष नं. - 0755-2466970, 2466859

फैक्स नं. - 0755-2462136

No: 1864 / SEIAA/2022

Date: 20/10/22

प्रति,

कलेक्टर

जिला - खरगौन (म.प्र.)

विषय: नवीन जिला सर्वेक्षण रिपोर्ट - खरगौन अन्य गौण खनिज रेत को छोड़कर

संदर्भ: आपका पत्र क्र. 8268, दिनांक 15/09/22

राज्य स्तरीय समाघात निर्धारण प्राधिकरण द्वारा 751वी बैठक दिनांक 14.10.2022 में निम्नानुसार निर्णय लिया गया :-

राज्य स्तरीय विशेषज्ञ मूल्यांकन समिति (SEAC) की 594वीं बैठक दिनांक 21/09/2022 में खरगौन अन्य गौण खनिज रेत को छोड़कर की जिला सर्वेक्षण रिपोर्ट में निम्नानुसार सुझाव सहित अनुशंसा की गई है।

".....समिति की अनुशंसा है कि खरगौन जिले की जिला सर्वेक्षण रिपोर्ट (अन्य गौण खनिज - रेत को छोड़कर) अनुमोदन हेतु विचारार्थ एवं आगामी कार्यवाही हेतु राज्य स्तरीय पर्यावरण समाघात निर्धारण प्राधिकरण की ओर प्रेषित की जाये।

राज्य स्तरीय समाघात निर्धारण प्राधिकरण (SEIAA) द्वारा विस्तृत चर्चा एवं विचार विमर्श उपरांत SEAC की 594वीं बैठक दिनांक 21/09/2022 की अनुशंसा को मान्य करते हुए खरगौन अन्य गौण खनिज रेत को छोड़कर की जिला सर्वेक्षण रिपोर्ट का अनुमोदन SEAC द्वारा सुझाई गई उपरोक्त अनुशंसाओं के साथ किया जाता है। तदनुसार जिला कलेक्टर, खरगौन को जिला सर्वेक्षण रिपोर्ट जिला पोर्टल पर अपलोड करवाये जाने एवं संचालक भौमिकी तथा खनिकर्म को सूचित किया जाये।

उपरोक्त निर्णयानुसार कृपया अनुमोदित नवीन जिला सर्वेक्षण रिपोर्ट जिला पोर्टल पर अपलोड करने का कष्ट करें। सुलभ संदर्भ हेतु अनुमोदित नवीन जिला सर्वेक्षण रिपोर्ट की साफ्टकॉपी ई-मेल के माध्यम से आपकी ओर प्रेषित है।

(श्रीमन् शुक्ला)
सदस्य सचिव

क्र.. /SEIAA/2022 भोपाल दिनांक
प्रतिलिपि :-

1. प्रमुख सचिव, म.प्र. शासन, पर्यावरण विभाग, मंत्रालय, भोपाल की ओर कृपया सूचनार्थ ।
2. संचालक, प्रशासन/तकनीकी, संचालनालय, भौमिकी तथा खनिकर्म, 29-ए, खनिज भवन, अरेरा हिल्स, भोपाल (म.प्र.)
3. सदस्य सचिव, राज्य स्तरीय विशेषज्ञ मूल्यांकन समिति (SEAC), अनुसंधान एवं विकास विंग, म.प्र. प्रदूषण नियंत्रण बोर्ड, पर्यावरण परिसर, ई-5, अरेरा कॉलोनी, भोपाल (म.प्र.) - 462016 की ओर सूचनार्थ ।

/
सदस्य सचिव